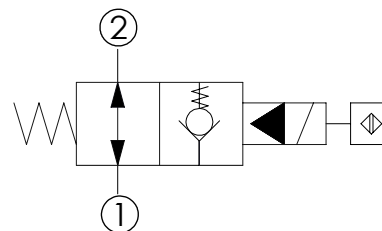
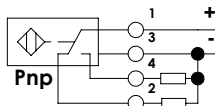
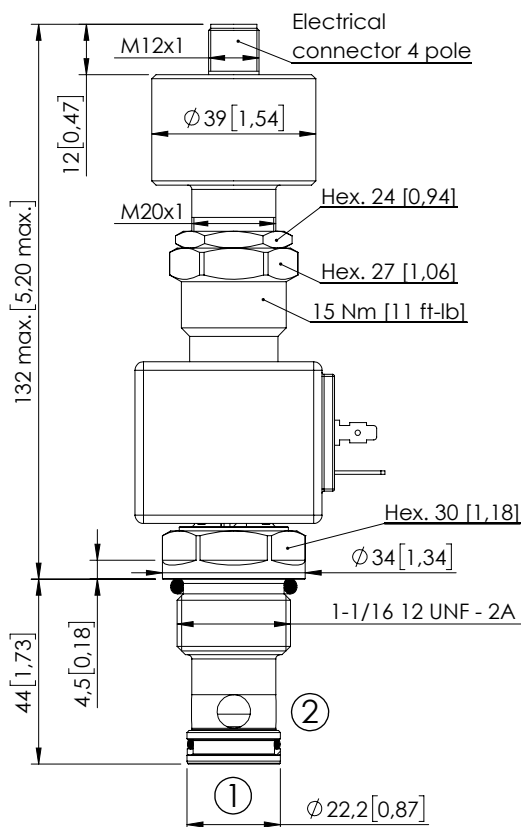


SOLENOID OPERATED CARTRIDGE

CEBN-190-XADR-06

POPPET TYPE
PROXIMITY SENSOR



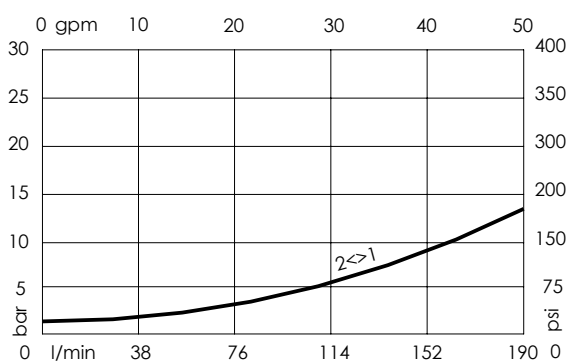
SPECIFICATIONS

| | |
|----------------------------------|--------------------------------|
| Max. operating pressure: | 350 bar (5000 psi) |
| Rated flow: | 190 l/min (50 gpm) |
| Cavity: | SAE-12-2N |
| Weight: | 0,61 kg (1,32 lbs) |
| Min. voltage required: | 90% of nominal |
| Coil type: | M7 type |
| Ambient temperature: | -20/+50 °C (-4/+122 °F) |
| Contamination class to ISO 4406: | See technical spec. |
| Seal kit: | RA100083 |
| Installation torque: | 135 - 150 Nm (100 - 111 ft-lb) |
| MTF _d : | 150 years |
| Operating temperature: | -25/+80°C (-13/+176 °F) |

NOTES

For other configurations/quick codes not available in this catalogue page please consult factory

CURVES



ORDERING CODES

| Quick code | Description | Connector | Voltage | Options |
|------------|--------------------------------|-----------|---------|------------------|
| CE001096 | CEBN-190-XADR-06-S12-V350-12HR | DIN 43650 | 12V DC | Proximity sensor |
| CE001097 | CEBN-190-XADR-06-S12-V350-24HR | DIN 43650 | 24V DC | Proximity sensor |
| | | | | |
| | | | | |
| | | | | |
| | | | | |