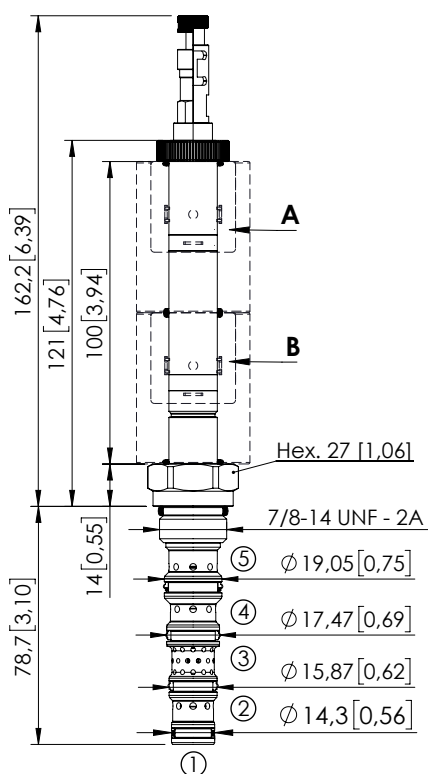
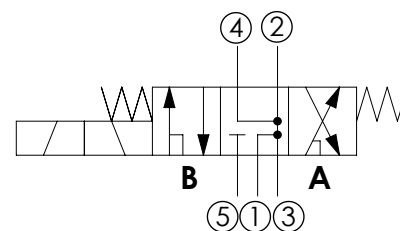


## SOLENOID OPERATED CARTRIDGE

## CEFS-030-SEFN

DIRECT OPERATED  
SPOOL TYPE

Dimensions: mm [inches]



## SPECIFICATIONS

Max. operating pressure:	350 bar (5000 psi)
Max. operating pressure on port 1:	210 bar (3000 psi)
Rated flow:	30 l/min (8 gpm)
Cavity:	SAE 10 5N
Weight:	0,22 kg (0,68 lbs)
Min. voltage required:	90% of nominal
Coil type:	M16 type
Ambient temperature:	-20/+50 °C (-4/+122 °F)
Contamination class to ISO 4406:	See technical spec.
Seal kit:	RB900107
Installation torque:	55 - 62 Nm (41 - 46 ft-lb)
MTTFd:	150 years
Leakage:	120 cm <sup>3</sup> /min (@46 cSt) 7,3 in <sup>3</sup> /min (@46 cSt)

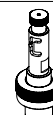
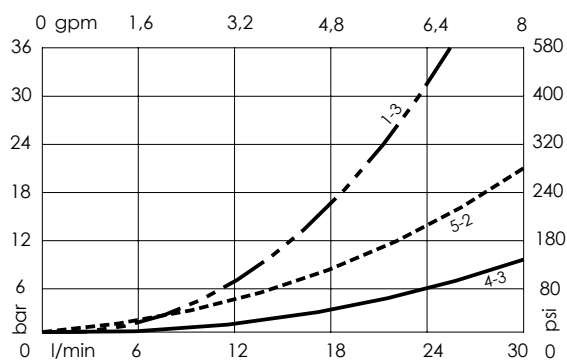
## NOTES

For other configurations/quick codes not available in this catalogue page please consult factory

## OPTIONS



Standard

Push and  
pull manual  
overridePush pull and  
twist manual  
override

## ORDERING CODES

Quick code	Description	Options	
CE001027	CEFS-030-SEFN-115-S10-N350	Standard	
CE001028	CEFS-030-SEFL-115-S10-N350	Push and pull manual override	
CE001029	CEFS-030-SEFG-115-S10-N350	Push pull and twist manual override	

Revision C