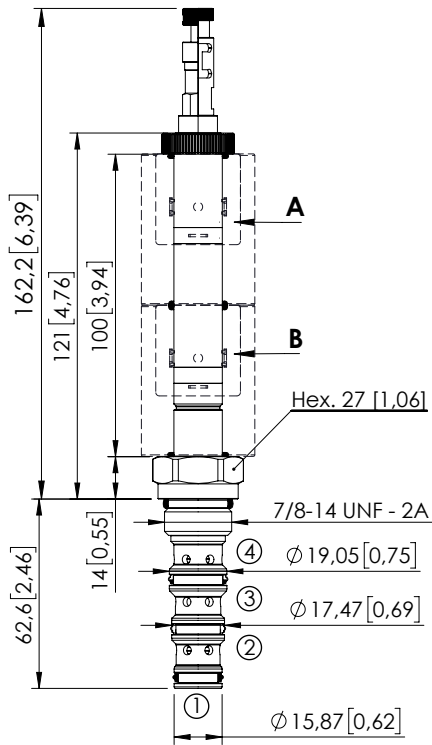


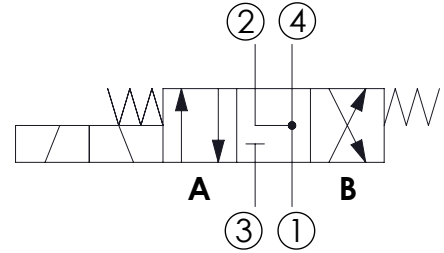
SOLENOID OPERATED CARTRIDGE

**CEES-030-SEFN**

DIRECT OPERATED  
SPOOL TYPE



Dimensions: mm [inches]



**SPECIFICATIONS**

Max. operating pressure:	350 bar (5000 psi)
Max. operating pressure on port 1:	210 bar (3000 psi)
Rated flow:	30 l/min (8 gpm)
Cavity:	SAE-10-4N
Weight:	0,21 kg (0,68 lbs)
Min. voltage required:	90% of nominal
Coil type:	M16 type
Ambient temperature:	-20/+50 °C (-4/+122 °F)
Contamination class to ISO 4406:	See technical spec.
Seal kit:	RB600102
Installation torque:	55 - 62 Nm (41 - 46 ft-lb)
MTF <sub>a</sub> :	150 years
Leakage:	120 cm <sup>3</sup> /min (@46 cSt) 7,3 in <sup>3</sup> /min (@46 cSt)

**NOTES**

For other configurations/quick codes not available in this catalogue page please consult factory

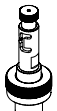
**OPTIONS**



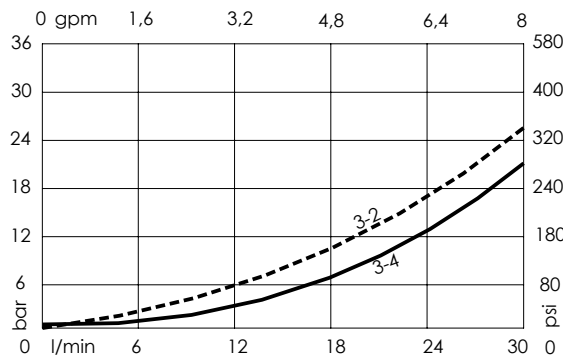
Standard



Push and pull  
manual  
override



Push pull and  
twist  
manual  
override



**ORDERING CODES**

Quick code	Description	Options
CE001002	CEES-030-SEFN-52-S10-N350	Standard
CE001003	CEES-030-SEFL-52-S10-N350	Push and pull manual override
CE001004	CEES-030-SEFG-52-S10-N350	Push pull and twist manual override