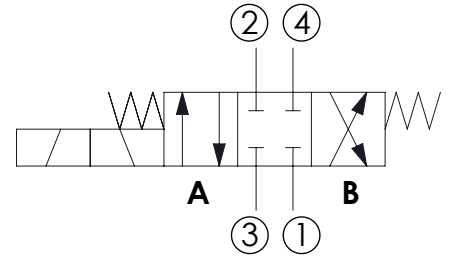
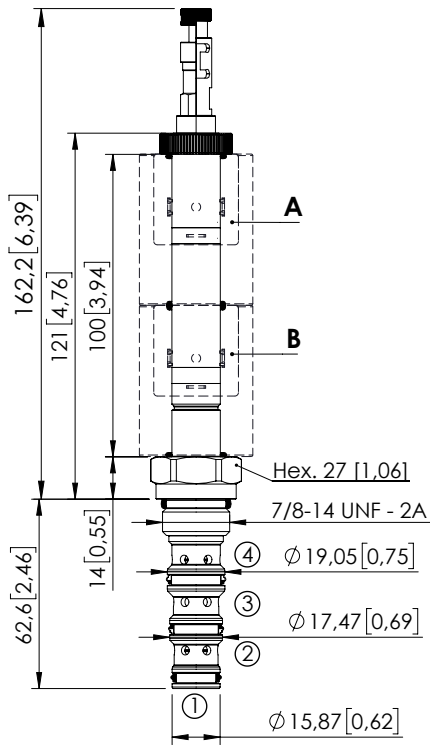


SOLENOID OPERATED CARTRIDGE

CEES-030-SEFN

DIRECT OPERATED
SPOOL TYPE



SPECIFICATIONS

Max. operating pressure:	350 bar (5000 psi)
Max. operating pressure on port 1:	210 bar (3000 psi)
Rated flow:	30 l/min (8 gpm)
Cavity:	SAE-10-4N
Weight:	0,21 kg (0,68 lbs)
Min. voltage required:	90% of nominal
Coil type:	M16 type
Ambient temperature:	-20/+50 °C (-4/+122 °F)
Contamination class to ISO 4406:	See technical spec.
Seal kit:	RB600102
Installation torque:	55 - 62 Nm (41 - 46 ft-lb)
MTF _a :	150 years
Leakage:	120 cm ³ /min (@46 cSt) 7,3 in ³ /min (@46 cSt)

NOTES

For other configurations/quick codes not available in this catalogue page please consult factory

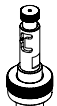
OPTIONS



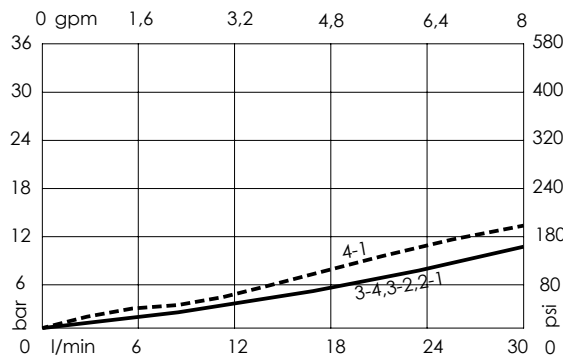
Standard



Push and pull
manual
override



Push pull and
twist
manual
override



ORDERING CODES

Quick code	Description	Options
CE000999	CEES-030-SEFN-51-S10-N350	Standard
CE001000	CEES-030-SEFL-51-S10-N350	Push and pull manual override
CE001001	CEES-030-SEFG-51-S10-N350	Push pull and twist manual override