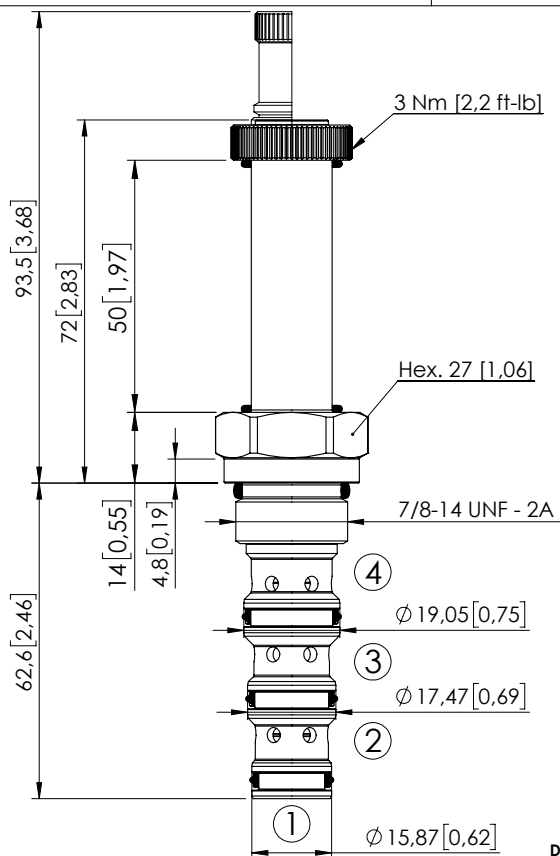
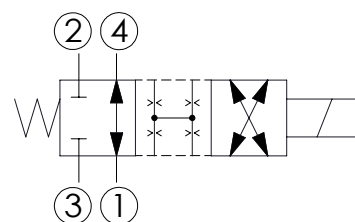


SOLENOID OPERATED CARTRIDGE

CEDS-030-SEFN-111 DIRECT ACTING
SPOOL TYPE

Dimensions: mm [inches]

**SPECIFICATIONS**

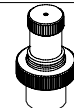
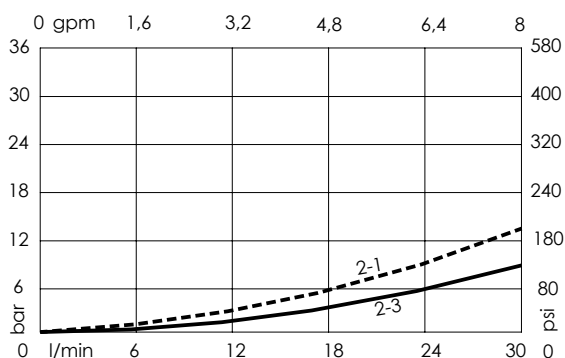
Max. operating pressure:	350 bar (5000 psi)
Rated flow:	30 l/min (8 gpm)
Cavity:	SAE-10-4N
Weight:	0,22 kg (0,44 lbs)
Min. voltage required:	90% of nominal
Coil type:	M16 type
Ambient temperature:	-20/+50 °C (-4/+122 °F)
Contamination class to ISO 4406:	See technical spec.
Seal kit:	RB600102
Installation torque:	55 - 62 Nm (41 - 46 ft-lb)
MTF _d :	150 years
Leakage:	70 cm ³ /min (@46 cSt) 4,2 in ³ /min (@46 cSt)

NOTES

For other configurations/quick codes not available in this catalogue page please consult factory

OPTIONS

Standard

Knob style
override**CURVES****ORDERING CODES**

Quick code	Description	Options	
CE000984	CEDS-030-SEFN-111-S10-N350	Standard	
CE000998	CEDS-030-SEFE-111-S10-N350	Knob style override	