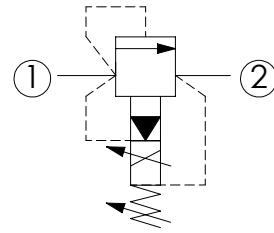
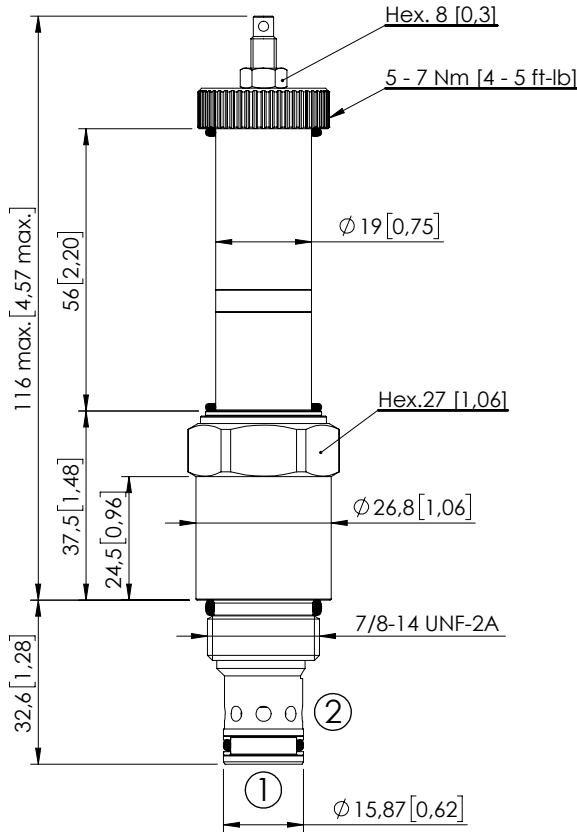


# CEBT-120-PMPS

PROPORTIONAL VALVES  
POPPET TYPE RELIEF  
SPOOL TYPE  
FOR INVERSE CONTROLLED



## SPECIFICATIONS

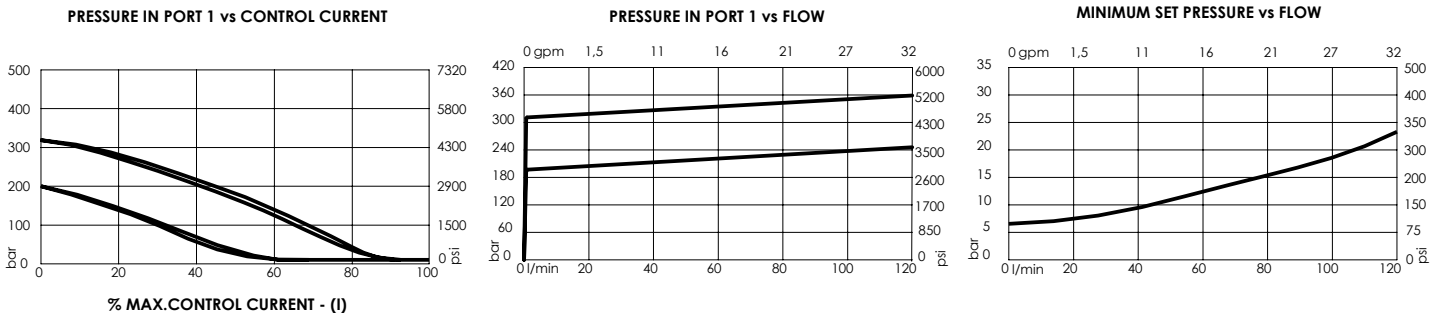
Max. operating pressure (port 1):	320 bar (4600 psi)
Max. operating pressure (port 2):	250 bar (3600 psi)
Rated flow:	120 l/min (32 gpm)
Pilot oil:	< 0,8 l/min (<0,2 gpm)
Type hydraulic fluid:	See Technical specif.
Hydraulic fluid temp. range:	-30/+100 °C (-22/+212 °F)
Viscosity range:	10 to 380 mm <sup>2</sup> /s
Contamination class to ISO 4406:	See technical spec.
Max. int. leakage:	200 cm <sup>3</sup> /min (@46 cSt, $\Delta p=250$ bar) 0,05 in <sup>3</sup> /min (@46 cSt, $\Delta p=3600$ psi)
Step response:	80 ms (Depending on the system)
Cavity:	SAE-10-2N
Weight:	0,21 kg (0,46 lbs)
Coil type:	M15 type
Ambient temperature:	-20/+50 °C (-4/+122 °F)
Hysteresis:	< 4% of the max. set pressure
PWM range recommended:	150-180 Hz
Installation torque:	55 - 62 Nm (41 - 46 ft-lb)
Seal kit:	RB100082
MTTF <sub>d</sub> :	150 - 1200 years: See technical spec.

Dimensions: mm [inches]

## NOTES

Pressure decreasing with current increasing.  
Maximum pressure value can be adjusted manually within a range.  
For other configurations/quick codes not available in this catalogue page please consult factory

## CURVES



## ORDERING CODES

Quick code	Description	Minimum pressure	Max. pressure setting range	Standard setting	Threshold current (with 12VDC coil)	Max control current (with 12V DC coil)
CE000890	CEBT-120-PMPS-91-S10-V320	7 bar (100 psi)	200-320 bar (2900-4600 psi)	210 bar (3000 psi)	200 mA (+/-7%)	1600 mA (+/-7%)