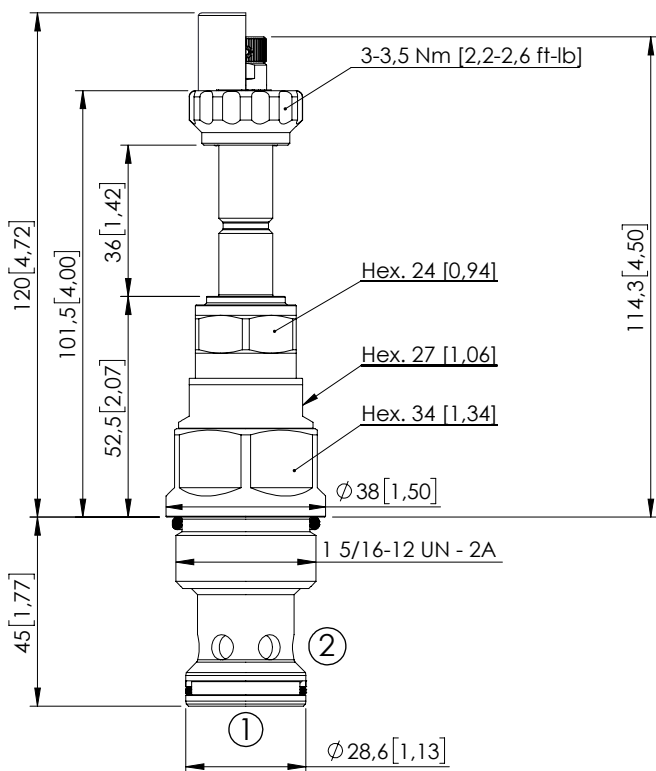


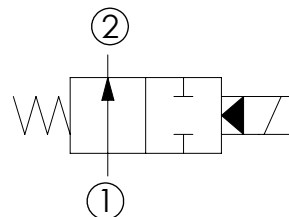
# SOLENOID OPERATED CARTRIDGE

# CEBT-350-NAFN-99

PILOTED OPERATED  
SPOOL TYPE



Dimensions: mm [inches]



## SPECIFICATIONS

Max. operating pressure:	350 bar (5000 psi)
Rated flow:	350 l/min (92 gpm)
Cavity:	SAE-16-2N
Weight:	0,5 kg (1,10 lbs)
Min. voltage required:	90% of nominal
Coil type:	M7 or M3 type
Ambient temperature:	-20/+50 °C (-4/+122 °F)
Contamination class to ISO 4406:	See technical spec.
Seal kit:	RA900084
Installation torque:	200 - 210 Nm (148 - 155 ft-lb)
MTF <sub>d</sub> :	150 years
Max. int. leakage:	350 cm <sup>3</sup> /min (@46 cSt) 21,3 in <sup>3</sup> /min (@46 cSt)

## NOTES

For other configurations/quick codes not available in this catalogue page please consult factory

## CURVES

## OPTIONS

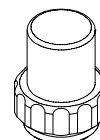
Standard



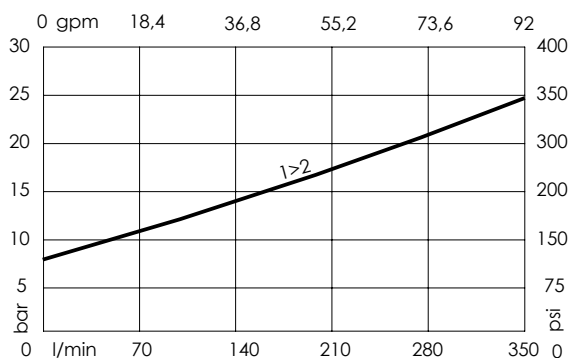
Knob style  
override



## SEALING CAP



Ordering code:  
AT000113



## ORDERING CODES

Quick code	Description	Options	Max operating pressure	
CE000861	CEBT-350-NAFN-99-S16-N350	Standard	350 bar (5000 psi)	
CE000888	CEBT-350-NAFE-99-S16-N350	Knob style override	350 bar (5000 psi)	