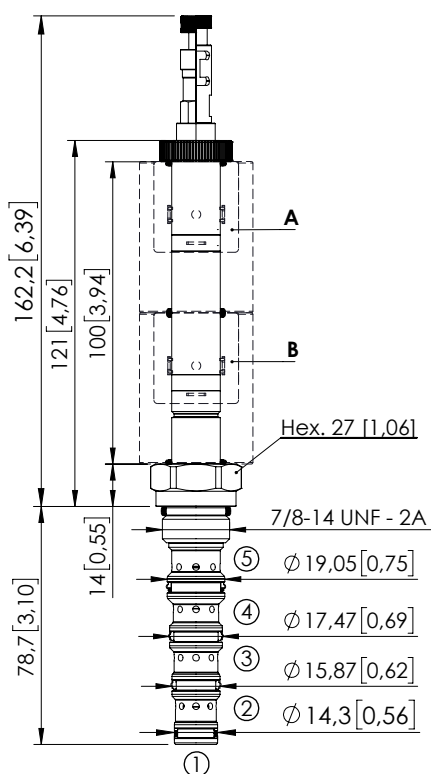


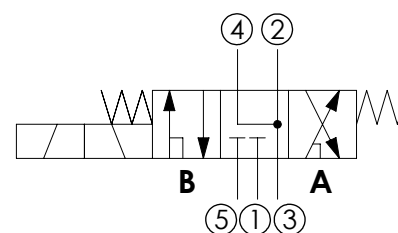
# SOLENOID OPERATED CARTRIDGE

# CEFS-030-SEFN-107

DIRECT OPERATED  
SPOOL TYPE



Dimensions: mm [inches]



## SPECIFICATIONS

Max. operating pressure:	350 bar (5000 psi)
Max. operating pressure on port 1:	210 bar (3000 psi)
Rated flow:	30 l/min (8 gpm)
Cavity:	SAE 10 5N
Weight:	0,22 kg (0,68 lbs)
Min. voltage required:	90% of nominal
Coil type:	M16 type
Ambient temperature:	-20/+50 °C (-4/+122 °F)
Contamination class to ISO 4406:	See technical spec.
Seal kit:	RB900107
Installation torque:	55 - 62 Nm (41 - 46 ft-lb)
MTTFd:	150 - 1200 years: See technical spec.
Leakage:	120 cm <sup>3</sup> /min (@46 cSt) 7,3 in <sup>3</sup> /min (@46 cSt)

## NOTES

For other configurations/quick codes not available in this catalogue page please consult factory

## OPTIONS



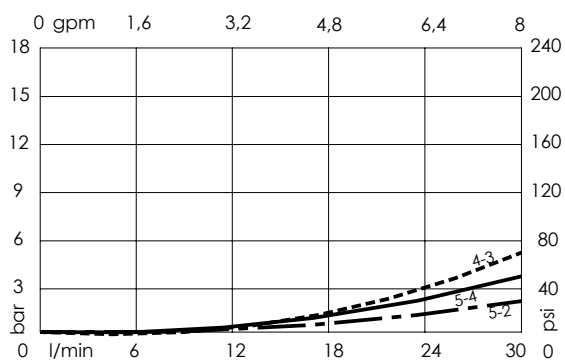
Standard



Push and  
pull manual  
override



Push pull and  
twist manual  
override



## ORDERING CODES

Quick code	Description	Options	
CE000793	CEFS-030-SEFN-107-S10-N350	Standard	
CE001017	CEFS-030-SEFL-107-S10-N350	Push and pull manual override	
CE001018	CEFS-030-SEFG-107-S10-N350	Push pull and twist manual override	

Revision D