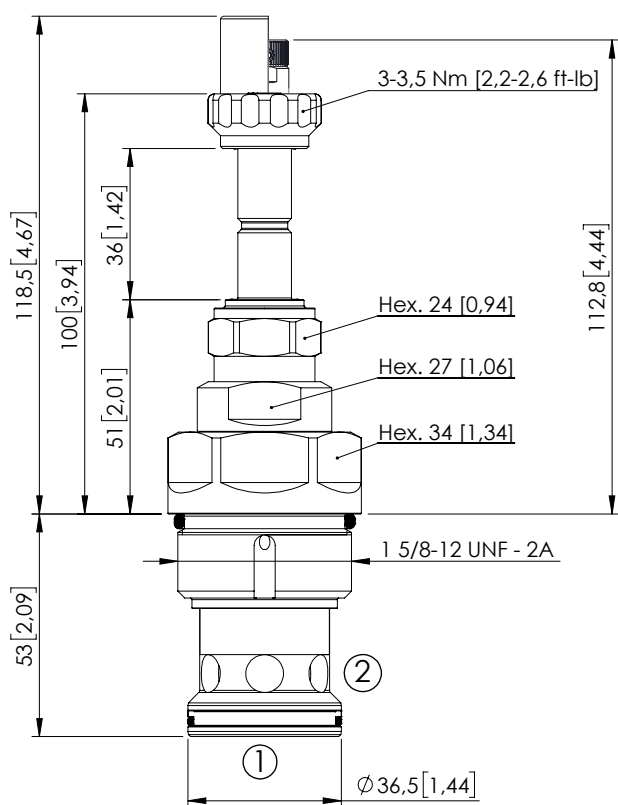
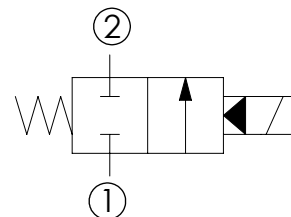


## SOLENOID OPERATED CARTRIDGE

**CEBT-600-NCFN-98**PILOTED OPERATED  
SPOOL TYPE

Dimensions: mm [inches]

**SPECIFICATIONS**

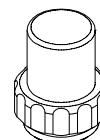
Max. operating pressure:	350 bar (5000 psi)
Rated flow:	600 l/min (158 gpm)
Cavity:	SAE-20-2N
Weight:	0,7 kg (1,54 lbs)
Min. voltage required:	90% of nominal
Coil type:	M7 or M3 type
Ambient temperature:	-20/+50 °C (-4/+122 °F)
Contamination class to ISO 4406:	See technical spec.
Seal kit:	RA900085
Installation torque:	140 - 150 Nm (103 - 110 ft-lb)
MTF <sub>d</sub> :	150 years
Max. int. leakage:	400 cm <sup>3</sup> /min (@46 cSt) 24,4 in <sup>3</sup> /min (@46 cSt)

**NOTES**

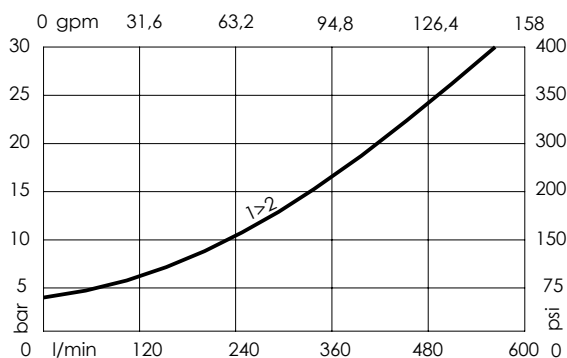
For other configurations/quick codes not available in this catalogue page please consult factory

**OPTIONS**

Standard

Knob style  
override**SEALING CAP**

Ordering code:  
AT000113

**CURVES****ORDERING CODES**

Quick code	Description	Options	Max operating pressure	
CE000763	CEBT-600-NCFN-98-S20-N350	Standard	350 bar (5000 psi)	
CE000764	CEBT-600-NCFK-98-S20-N350	Knob style override	350 bar (5000 psi)	