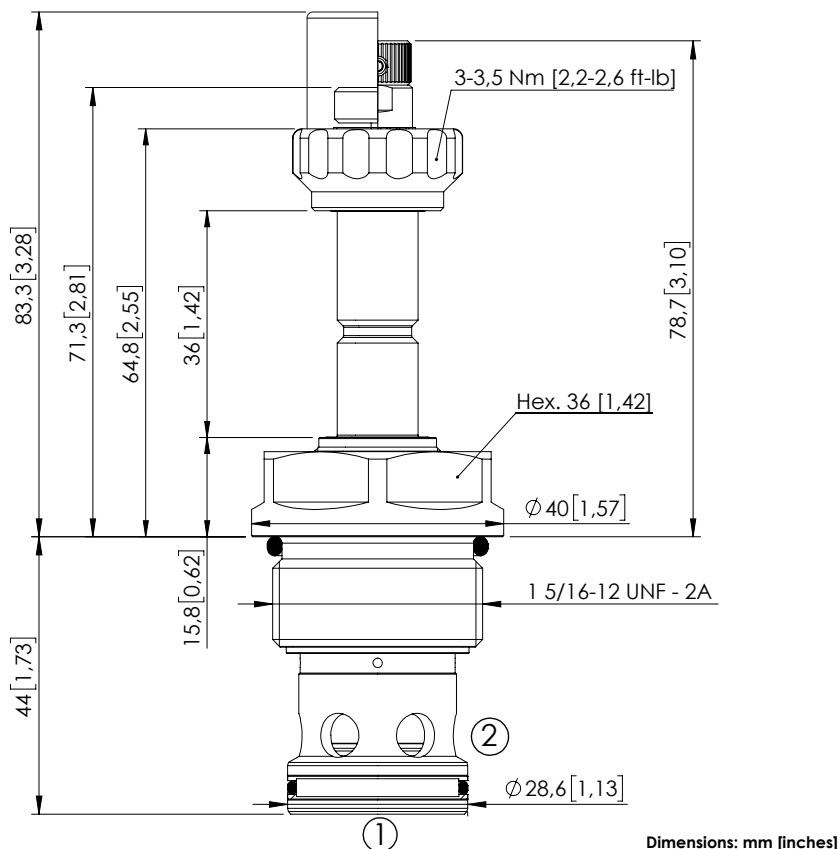


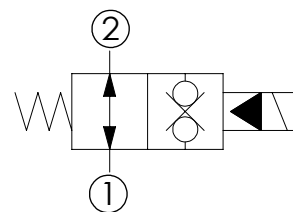
# SOLENOID OPERATED CARTRIDGE

## CEBN-310-NAFN-32

PILOT OPERATED  
POPPET TYPE



Dimensions: mm [inches]



### SPECIFICATIONS

Max. operating pressure:	350/500 bar (5000/7200 psi)
Rated flow:	310 l/min (82 gpm)
Cavity:	SAE-16-2N
Weight:	0,36 kg (0,79 lbs)
Min. voltage required:	90% of nominal
Coil type:	M7 or M3 type
Ambient temperature:	-20/+50 °C (-4/+122 °F)
Contamination class to ISO 4406:	See technical spec.
Seal kit:	RB900084
Installation torque:	200 - 210 Nm (148 - 155 ft-lb)
MTF <sub>d</sub> :	150 years

### NOTES

For other configurations/quick codes not available in this catalogue page please consult factory

### OPTIONS

Standard



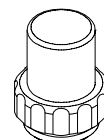
Push style override



Knob style override

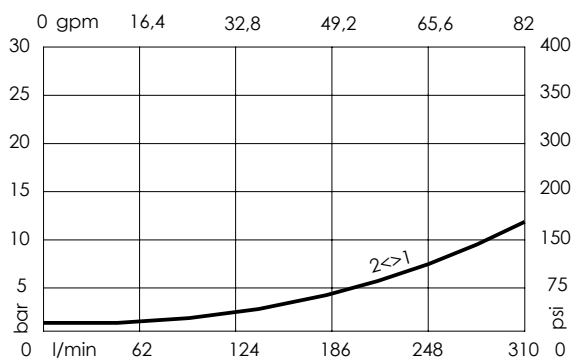


### SEALING CAP



Ordering code:  
AT000113

### CURVES



### ORDERING CODES

Quick code	Description	Options	Max operating pressure	
CE000417	CEBN-310-NAFN-32-S16-N350	Standard	350 bar (5000 psi)	
CE000418	CEBN-310-NAFP-32-S16-N350	Push style override	350 bar (5000 psi)	
CE000419	CEBN-310-NAFK-32-S16-N350	Knob style override	350 bar (5000 psi)	
CE000717	CEBN-310-NAFN-32-S16-N500	Standard	500 bar (7200 psi)	
CE000718	CEBN-310-NAFP-32-S16-N500	Push style override	500 bar (7200 psi)	
CE000719	CEBN-310-NAFK-32-S16-N500	Knob style override	500 bar (7200 psi)	