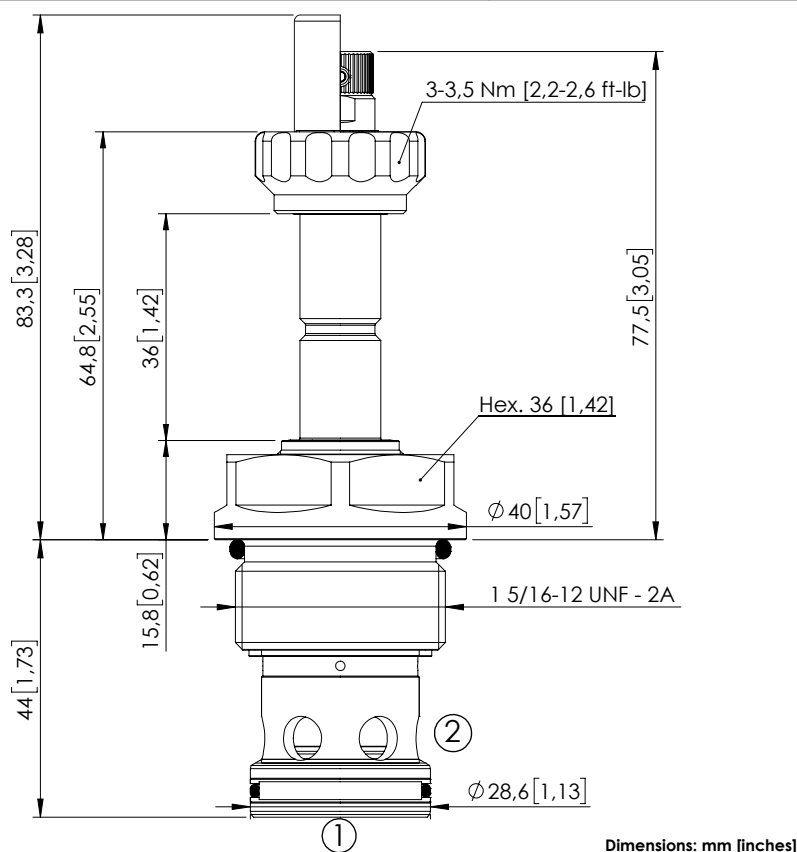
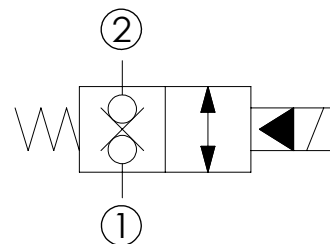


## SOLENOID OPERATED CARTRIDGE

**CEBN-310-NCFN-31**PILOT OPERATED  
POPPET TYPE

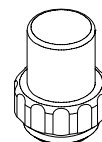
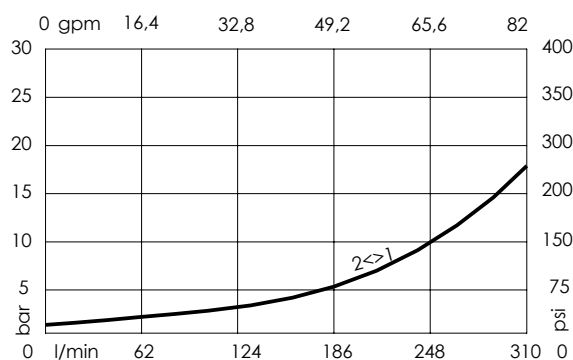
Dimensions: mm [inches]

**SPECIFICATIONS****Max. operating pressure:** 350/500 bar (5000/7200 psi)**Rated flow:** 310 l/min (82 gpm)**Cavity:** SAE-16-2N**Weight:** 0,36 kg (0,79 lbs)**Min. voltage required:** 90% of nominal**Coil type:** M7 or M3 type**Ambient temperature:** -20/+50 °C (-4/+122 °F)**Contamination class to ISO 4406:** See technical spec.**Seal kit:** RB900084**Installation torque:** 200 - 210 Nm (148 - 155 ft-lb)**MTF<sub>d</sub>:** 150 years**NOTES**

For other configurations/quick codes not available in this catalogue page please consult factory

**OPTIONS**

Standard

Knob style  
override**SEALING CAP**Ordering code:  
AT000113**CURVES****ORDERING CODES**

Quick code	Description	Options	Max operating pressure	
CE000401	CEBN-310-NCFN-31-S16-N350	Standard	350 bar (5000 psi)	
CE000403	CEBN-310-NCFK-31-S16-N350	Knob style override	350 bar (5000 psi)	
CE000701	CEBN-310-NCFN-31-S16-N500	Standard	500 bar (7200 psi)	
CE000703	CEBN-310-NCFK-31-S16-N500	Knob style override	500 bar (7200 psi)	