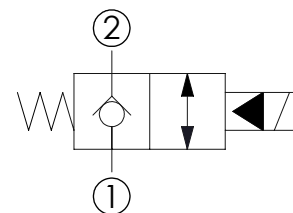
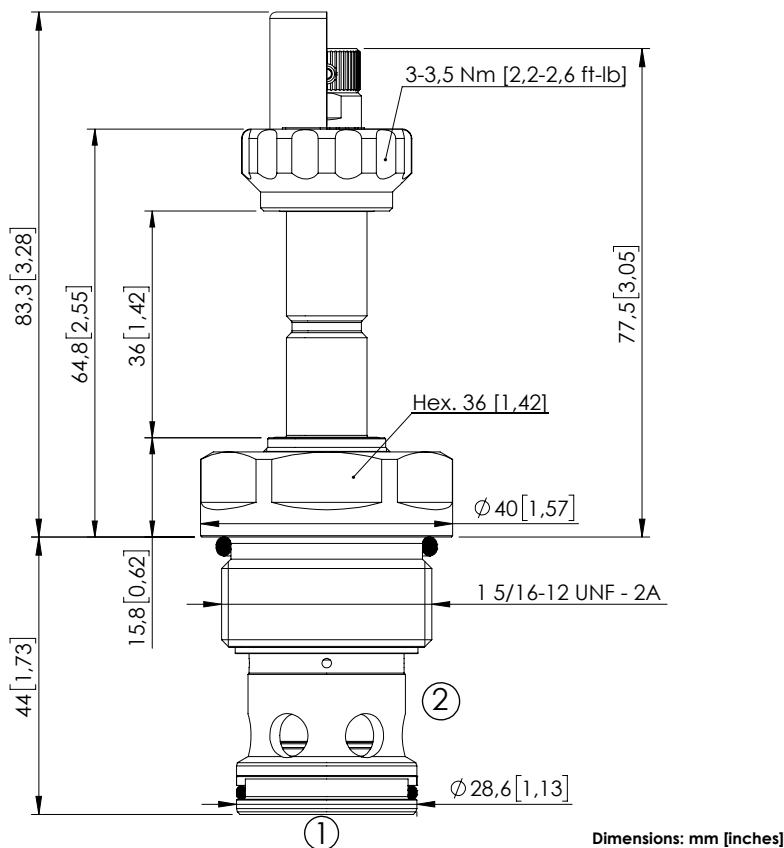


SOLENOID OPERATED CARTRIDGE

CEBN-310-NCFN-03PILOT OPERATED
POPPET TYPE**SPECIFICATIONS**

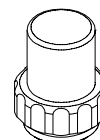
Max. operating pressure:	350/500 bar (5000/7200 psi)
Rated flow:	310 l/min (82 gpm)
Cavity:	SAE-16-2N
Weight:	0,36 kg (0,79 lbs)
Min. voltage required:	90% of nominal
Coil type:	M7 or M3 type
Ambient temperature:	-20/+50 °C (-4/+122 °F)
Contamination class to ISO 4406:	See technical spec.
Seal kit:	RA900084
Installation torque:	200 - 210 Nm (148 - 155 ft-lb)
MTF _d :	150 years

NOTES

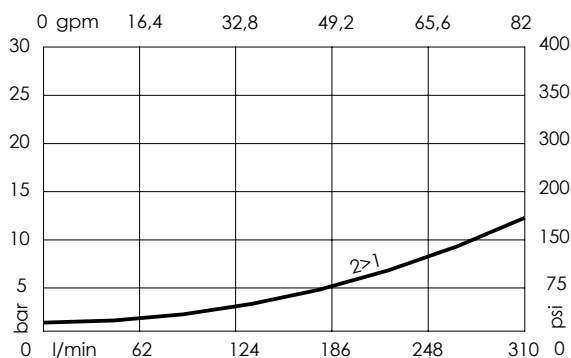
For other configurations/quick codes not available in this catalogue page please consult factory

OPTIONS

Standard

Knob style
override**SEALING CAP**

Ordering code:
AT000113

CURVES**ORDERING CODES**

Quick code	Description	Options	Max operating pressure	
CE000389	CEBN-310-NCFN-03-S16-N350	Standard	350 bar (5000 psi)	
CE000391	CEBN-310-NCFK-03-S16-N350	Knob style override	350 bar (5000 psi)	
CE000689	CEBN-310-NCFN-03-S16-N500	Standard	500 bar (7200 psi)	
CE000691	CEBN-310-NCFK-03-S16-N500	Knob style override	500 bar (7200 psi)	