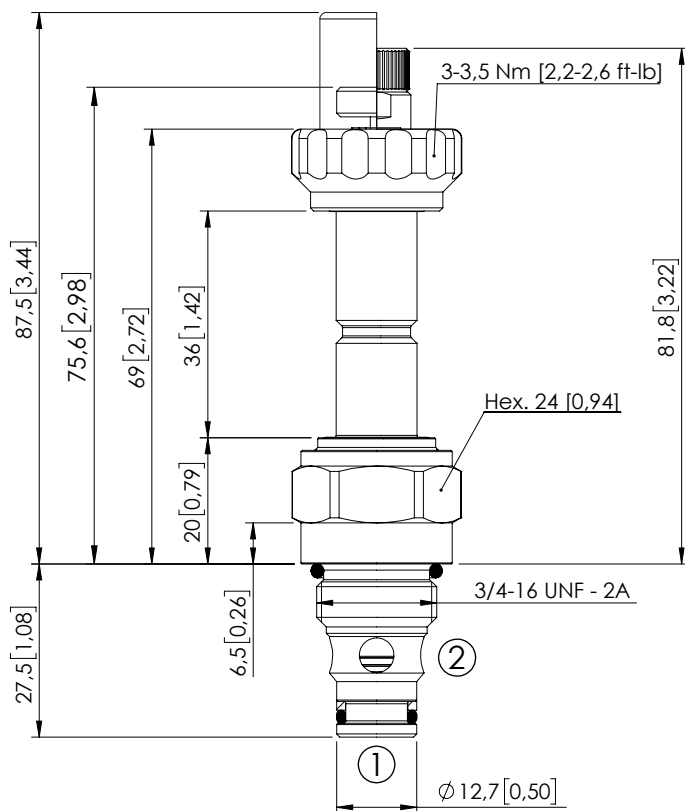


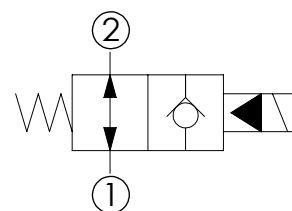
# SOLENOID OPERATED CARTRIDGE

# CEBN-060-NAFN-04

PILOT OPERATED  
POPPET TYPE



Dimensions: mm [inches]



## SPECIFICATIONS

Max. operating pressure:	350/500 bar (5000/7200 psi)
Rated flow:	60 l/min (16 gpm)
Cavity:	SAE-08-2N
Weight:	0,15 kg (0,33 lbs)
Min. voltage required:	90% of nominal
Coil type:	M7 or M3 type
Ambient temperature:	-20/+50 °C (-4/+122 °F)
Contamination class to ISO 4406:	See technical spec.
Seal kit:	RA900081
Installation torque:	45 - 50 Nm (33 - 37 ft-lb)
MTTFd:	150 years

## NOTES

For other configurations/quick codes not available in this catalogue page please consult factory

## OPTIONS

Standard



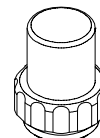
Push style  
override



Knob style  
override

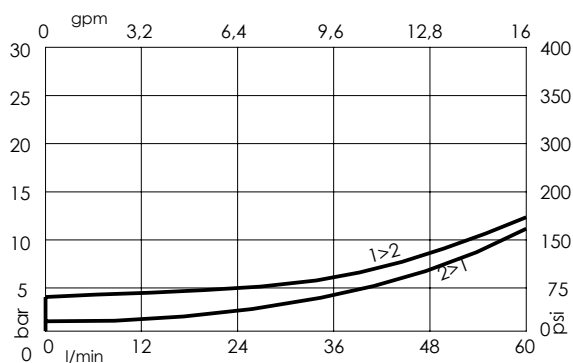


## SEALING CAP



Ordering code:  
AT000113

## CURVES



## ORDERING CODES

Quick code	Description	Options	Max operating pressure	
CE000233	CEBN-060-NAFN-04-S08-N350	Standard	350 bar (5000 psi)	
CE000234	CEBN-060-NAFP-04-S08-N350	Push style override	350 bar (5000 psi)	
CE000235	CEBN-060-NAFK-04-S08-N350	Knob style override	350 bar (5000 psi)	
CE000533	CEBN-060-NAFN-04-S08-N500	Standard	500 bar (7200 psi)	
CE000534	CEBN-060-NAFP-04-S08-N500	Push style override	500 bar (7200 psi)	
CE000535	CEBN-060-NAFK-04-S08-N500	Knob style override	500 bar (7200 psi)	