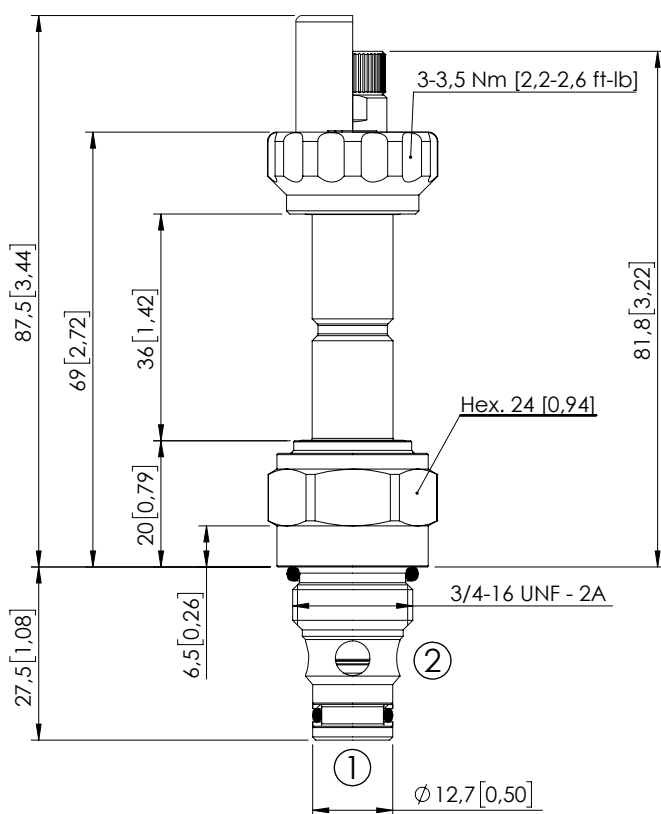
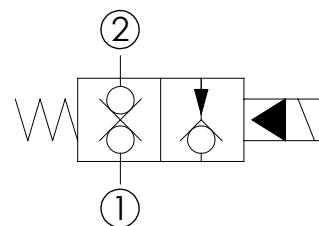


## SOLENOID OPERATED CARTRIDGE

**CEBN-060-NCFN-11**PILOT OPERATED  
POPPET TYPE

Dimensions: mm [inches]

**SPECIFICATIONS**

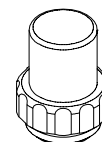
|                                  |                                       |
|----------------------------------|---------------------------------------|
| Max. operating pressure:         | 350/500 bar (5000/7200 psi)           |
| Rated flow:                      | 60 l/min (16 gpm)                     |
| Cavity:                          | SAE-08-2N                             |
| Weight:                          | 0,15 kg (0,30 lbs)                    |
| Min. voltage required:           | 90% of nominal                        |
| Coil type:                       | M7 or M3 type                         |
| Ambient temperature:             | -20/+50 °C (-4/+122 °F)               |
| Contamination class to ISO 4406: | See technical spec.                   |
| Seal kit:                        | RB900081                              |
| Installation torque:             | 45 - 50 Nm (33 - 37 ft-lb)            |
| MTF <sub>d</sub> :               | 150 - 1200 years: See technical spec. |

**NOTES**

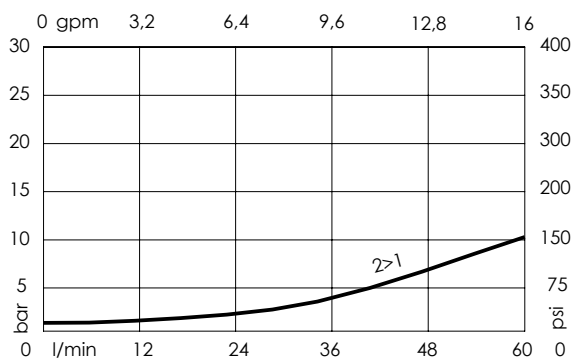
For other configurations/quick codes not available in this catalogue page please consult factory

**OPTIONS**

Standard

Knob style  
override**SEALING CAP**

Ordering code:  
AT000113

**CURVES****ORDERING CODES**

| Quick code | Description               | Options             | Max operating pressure |  |
|------------|---------------------------|---------------------|------------------------|--|
| CE000222   | CEBN-060-NCFN-11-S08-N350 | Standard            | 350 bar (5000 psi)     |  |
| CE000224   | CEBN-060-NCFK-11-S08-N350 | Knob style override | 350 bar (5000 psi)     |  |
| CE000522   | CEBN-060-NCFN-11-S08-N500 | Standard            | 500 bar (7200 psi)     |  |
| CE000524   | CEBN-060-NCFK-11-S08-N500 | Knob style override | 500 bar (7200 psi)     |  |
|            |                           |                     |                        |  |
|            |                           |                     |                        |  |