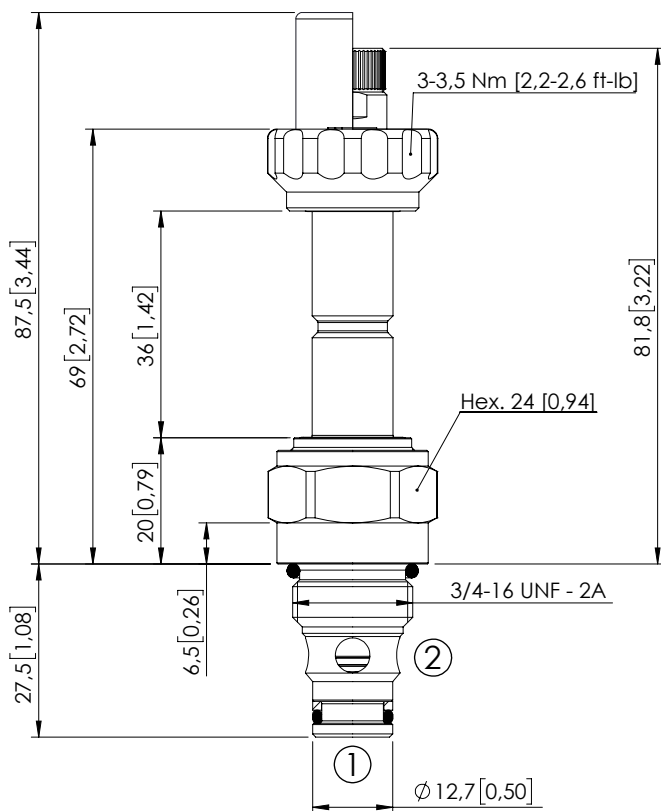
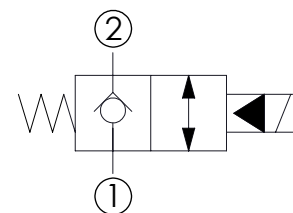


## SOLENOID OPERATED CARTRIDGE

**CEBN-060-NCFN-03**PILOT OPERATED  
POPPET TYPE

Dimensions: mm [inches]

**SPECIFICATIONS**

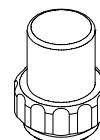
Max. operating pressure:	350/500 bar (5000/7200 psi)
Rated flow:	60 l/min (16 gpm)
Cavity:	SAE-08-2N
Weight:	0,15 kg (0,33 lbs)
Min. voltage required:	90% of nominal
Coil type:	M7 or M3 type
Ambient temperature:	-20/+50 °C (-4/+122 °F)
Contamination class to ISO 4406:	See technical spec.
Seal kit:	RA900081
Installation torque:	45 - 50 Nm (33 - 37 ft-lb)
MTTFd:	150 years

**NOTES**

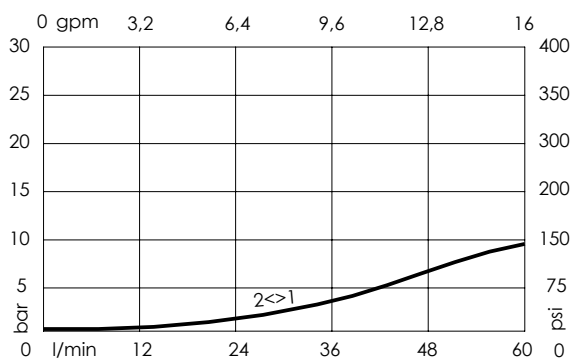
For other configurations/quick codes not available in this catalogue page please consult factory

**OPTIONS**

Standard

Knob style  
override**SEALING CAP**

Ordering code:  
AT000113

**CURVES****ORDERING CODES**

Quick code	Description	Options	Max operating pressure
CE000214	CEBN-060-NCFN-03-S08-N350	Standard	350 bar (5000 psi)
CE000216	CEBN-060-NCFK-03-S08-N350	Knob style override	350 bar (5000 psi)
CE000514	CEBN-060-NCFN-03-S08-N500	Standard	500 bar (7200 psi)
CE000516	CEBN-060-NCFK-03-S08-N500	Knob style override	500 bar (7200 psi)