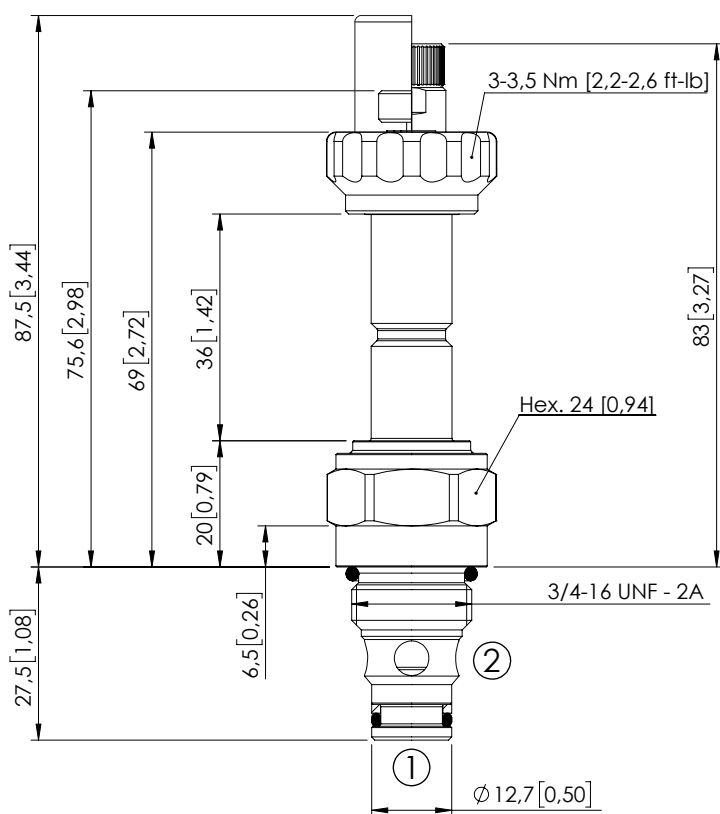


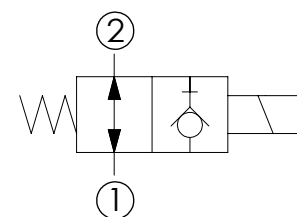
SOLENOID OPERATED CARTRIDGE

CEBD-001-NAFN-14

DIRECT OPERATED
POPPET TYPE



Dimensions: mm [inches]



SPECIFICATIONS

Max. operating pressure:	350/500 bar (5000/7200 psi)
Rated flow:	1,5 l/min (0,4 gpm)
Cavity:	SAE-08-2N
Weight:	0,15 kg (0,33 lbs)
Min. voltage required:	90% of nominal
Coil type:	M7 or M3 type
Ambient temperature:	-20/+50 °C (-4/+122 °F)
Contamination class to ISO 4406:	See technical spec.
Seal kit:	RA900081
Installation torque:	45 - 50 Nm (33 - 37 ft-lb)
MTTFd:	150 years

NOTES

For other configurations/quick codes not available in this catalogue page please consult factory

OPTIONS

Standard



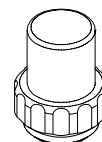
Push style
override



Knob style
override

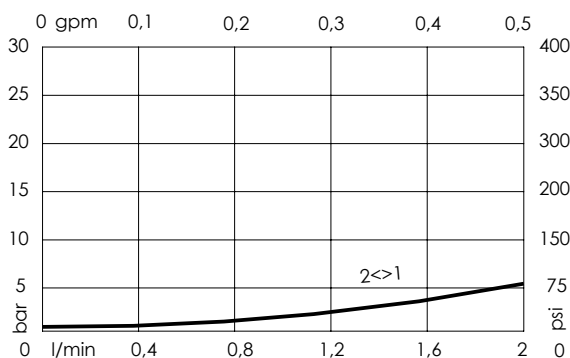


SEALING CAP



Ordering code:
AT000113

CURVES



ORDERING CODES

Quick code	Description	Options	Max operating pressure	
CE000207	CEBD-001-NAFN-14-S08-N350	Standard	350 bar (5000 psi)	
CE000208	CEBD-001-NAFP-14-S08-N350	Push style override	350 bar (5000 psi)	
CE000209	CEBD-001-NAFK-14-S08-N350	Knob style override	350 bar (5000 psi)	
CE000507	CEBD-001-NAFN-14-S08-N500	Standard	500 bar (7200 psi)	
CE000508	CEBD-001-NAFP-14-S08-N500	Push style override	500 bar (7200 psi)	
CE000509	CEBD-001-NAFK-14-S08-N500	Knob style override	500 bar (7200 psi)	