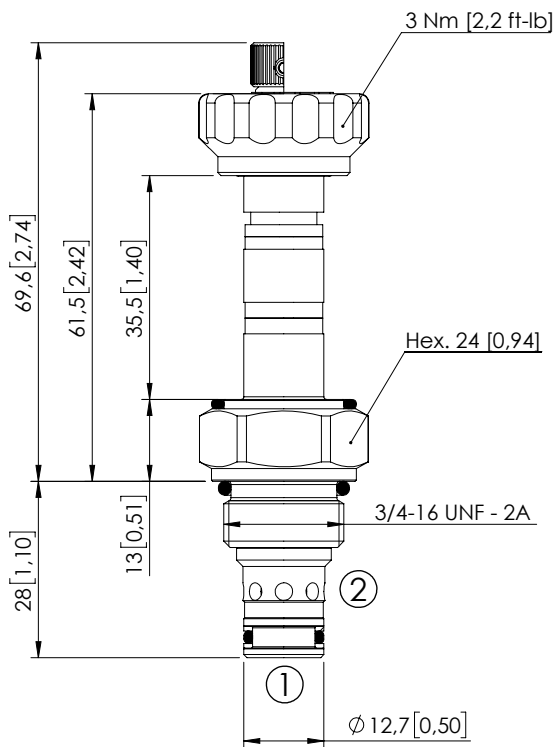


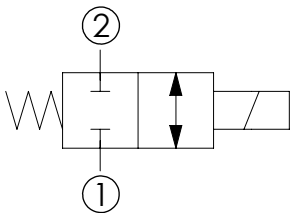
SOLENOID OPERATED CARTRIDGE

CEBS-010-NCFN-22

DIRECT OPERATED
SPOOL TYPE



Dimensions: mm [inches]



SPECIFICATIONS

| | |
|----------------------------------|---------------------------------------|
| Max. operating pressure: | 210 bar (3000 psi) |
| Rated flow: | 10 l/min (3 gpm) |
| Cavity: | SAE-08-2N |
| Weight: | 0,12 kg (0,26 lbs) |
| Min. voltage required: | 90% of nominal |
| Coil type: | M7 or M3 type |
| Ambient temperature: | -20/+50 °C (-4/+122 °F) |
| Contamination class to ISO 4406: | See technical spec. |
| Seal kit: | RB700081 |
| Installation torque: | 45 - 50 Nm (33 - 37 ft-lb) |
| MTF _d : | 150 - 1200 years: See technical spec. |

NOTES

For other configurations/quick codes not available in this catalogue page please consult factory

OPTIONS

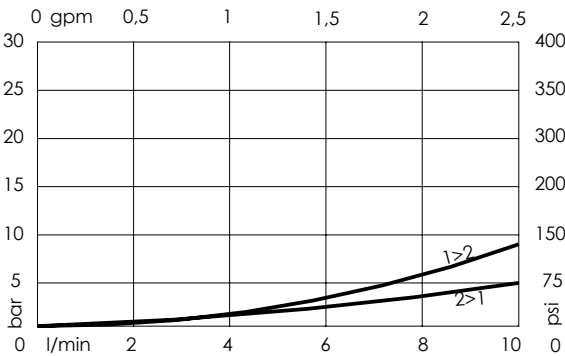
Standard



Knob style
override



CURVES



ORDERING CODES

| Quick code | Description | Options | Max operating pressure | |
|------------|---------------------------|---------------------|------------------------|--|
| CE000092 | CEBS-010-NCFN-22-S08-N210 | Standard | 210 bar (3000 psi) | |
| CE000093 | CEBS-010-NCFE-22-S08-N210 | Knob style override | 210 bar (3000 psi) | |
| | | | | |
| | | | | |
| | | | | |
| | | | | |