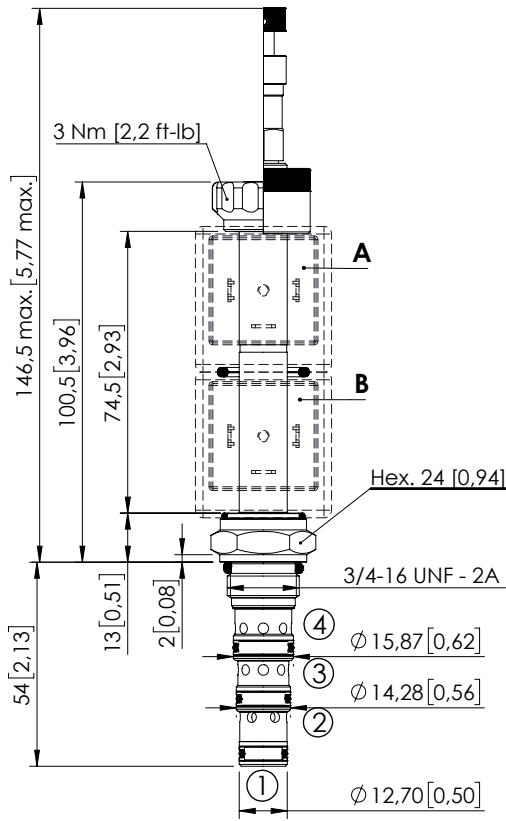


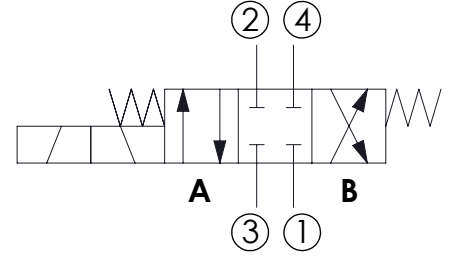
SOLENOID OPERATED CARTRIDGE

**CEES-010-SEFN-51**

DIRECT OPERATED  
SPOOL TYPE



Dimensions: mm [inches]



**SPECIFICATIONS**

|                                    |  |
|------------------------------------|--|
| Max. operating pressure:           | 350 bar (5000 psi)   |
| Max. operating pressure on port 1: | 210 bar (3000 psi)   |
| Rated flow:                        | 10 l/min (3 gpm)   |
| Cavity:                            | SAE-08-4N  |
| Weight:                            | 0,18 kg (0,40 lbs)   |
| Min. voltage required:             | 90% of nominal   |
| Coil type:                         | M7 or M3 type  |
| Ambient temperature:               | -20/+50 °C (-4/+122 °F)  |
| Contamination class to ISO 4406:   | See technical spec.  |
| Seal kit:                          | RB700101   |
| Installation torque:               | 45 - 50 Nm (33 - 37 ft-lb)   |
| MTF <sub>a</sub> :                 | 150 - 1200 years: See technical spec.                                    |
| Leakage:                           | 120 cm <sup>3</sup> /min (@46 cSt)<br>7,3 in <sup>3</sup> /min (@46 cSt) |

**NOTES**

For other configurations/quick codes not available in this catalogue page please consult factory

**OPTIONS**



Standard

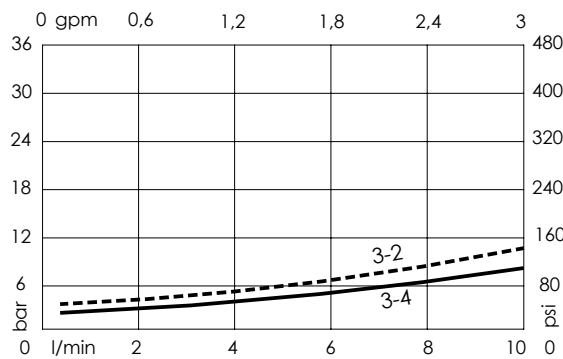


Push and pull manual override



Push pull and twist manual override

**CURVES**



**ORDERING CODES**

| Quick code | Description               | Options                             |
|------------|---------------------------|-------------------------------------|
| CE000028   | CEES-010-SEFN-51-S08-N350 | Standard                            |
| CE000098   | CEES-010-SEFL-51-S08-N350 | Push and pull manual override       |
| CE000189   | CEES-010-SEFG-51-S08-N350 | Push pull and twist manual override |
|            |                           |                                     |
|            |                           |                                     |
|            |                           |                                     |