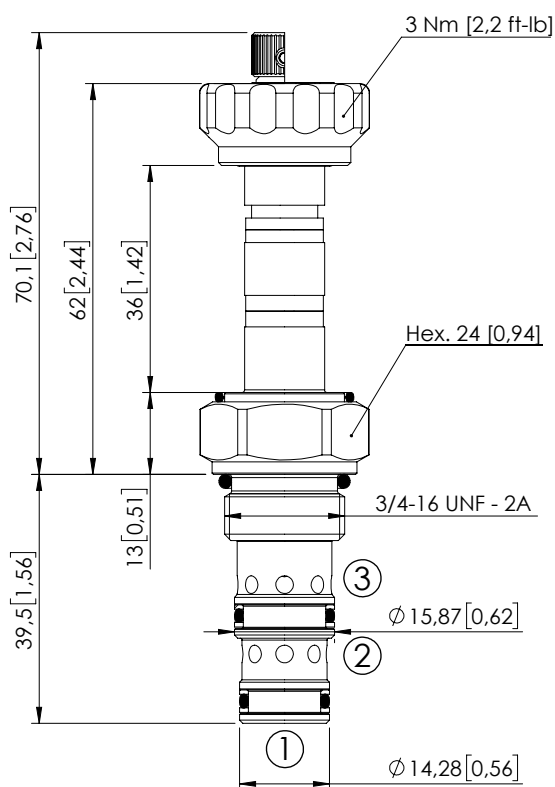
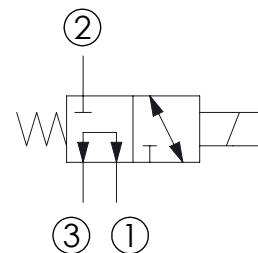


SOLENOID OPERATED CARTRIDGE

CECS-015-SEFN-63DIRECT OPERATED
SPOOL TYPE

Dimensions: mm [inches]

**SPECIFICATIONS**

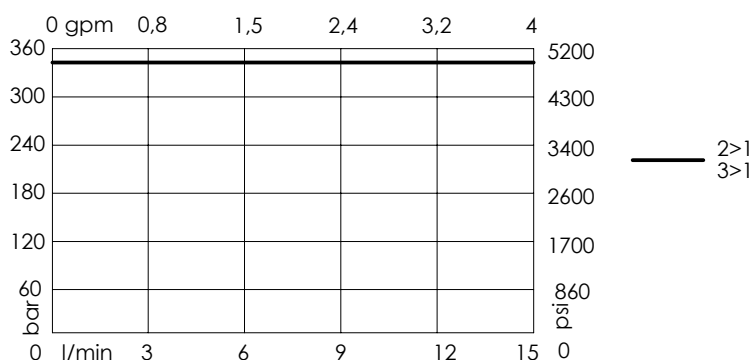
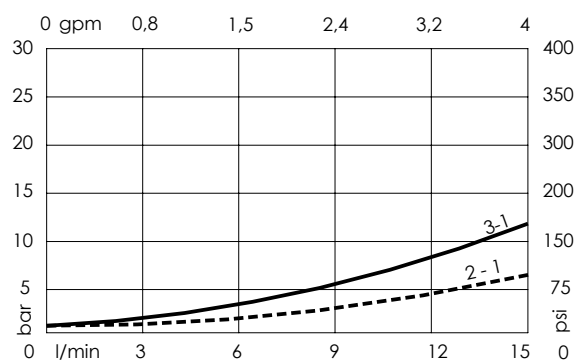
| | |
|------------------------------------|--|
| Max. operating pressure: | 350 bar (5000 psi) |
| Max. operating pressure on port 1: | 280 bar (4000 psi) |
| Rated flow: | 15 l/min (4 gpm) |
| Cavity: | SAE-08-3N |
| Weight: | 0,14 kg (0,26 lbs) |
| Min. voltage required: | 90% of nominal |
| Coil type: | M7 or M3 type |
| Ambient temperature: | -20/+50 °C (-4/+122 °F) |
| Contamination class to ISO 4406: | See technical spec. |
| Seal kit: | RB700091 |
| Installation torque: | 45 - 50 Nm (33 - 37 ft-lb) |
| MTTFd: | 150 years |
| Leakage: | 120 cm ³ /min (@46 cSt) 7,3 in ³ /min (@46 cSt) |

NOTES

For other configurations/quick codes not available in this catalogue page please consult factory

OPTIONS

Standard

Knob style
override**CURVES****ORDERING CODES**

| Quick code | Description | Options | |
|------------|---------------------------|---------------------|--|
| CE000011 | CECS-015-SEFN-63-S08-N350 | Standard | |
| CE000068 | CECS-015-SEFE-63-S08-N350 | Knob style override | |
| | | | |
| | | | |
| | | | |
| | | | |

Revision C