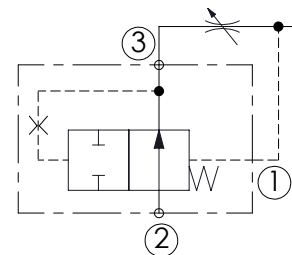
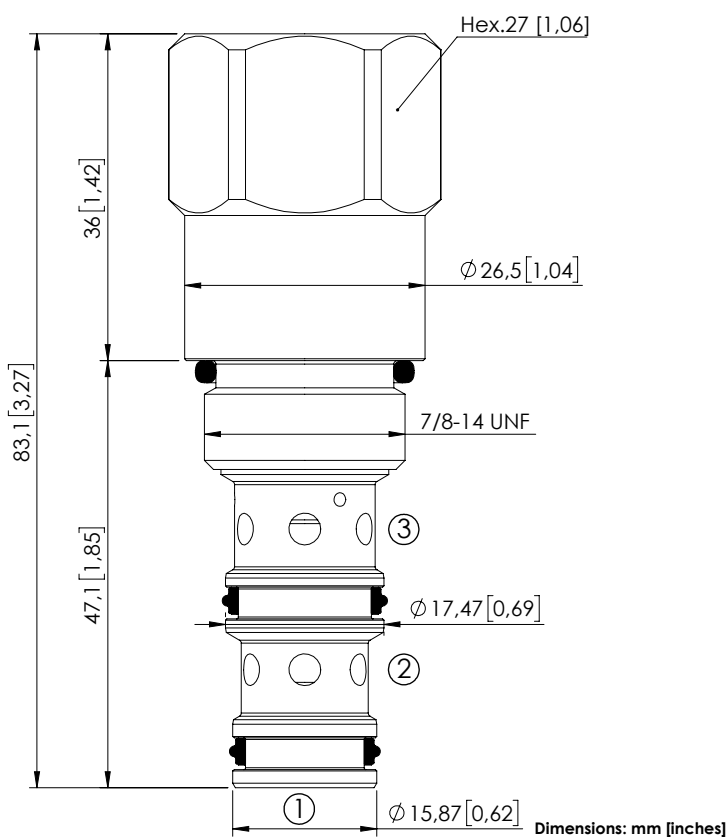


CDLN-040-CCTE

NORMALLY CLOSED
SPOOL TYPE

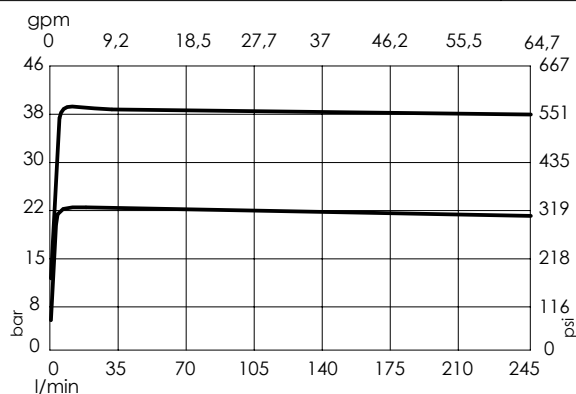
SPECIFICATIONS

Max. operating pressure:	350 bar (5000 psi)
Rated flow:	40 l/min (11 gpm)
Cavity:	SAE-10-3N
Weight:	0,21 kg (0,39 lbs)
Spool:	Ø10 mm [0,39]
Seal kit:	RB600092
Installation torque:	34 - 37 Nm (25 - 27 ft-lb)
Contamination class to ISO 4406:	See technical spec.
MTTFa:	150 years

NOTES

For other configurations/quick codes not available in this catalogue page please consult factory.

CURVES



ORDERING CODES

Quick code	Description	Closing pressure	
CD000688	CDLN-040-CCTE-FN-S10-N003	3 bar (45 psi)	
CD000580	CDLN-040-CCTE-FN-S10-N005	5 bar (75 psi)	
CD000619	CDLN-040-CCTE-FN-S10-N011	11 bar (150 psi)	