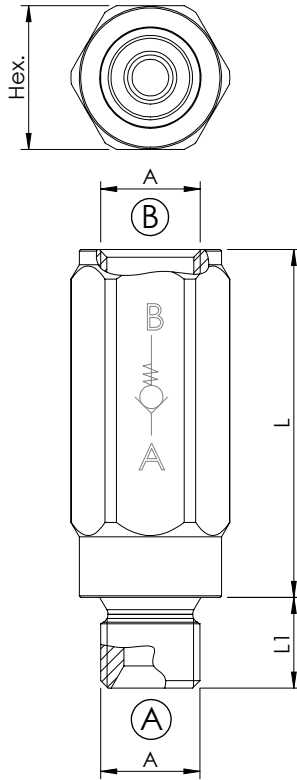


CHECK VALVE

CDVN-XXX-PSNC

SLEEVE
POPPET TYPE



Dimensions: mm [inches]



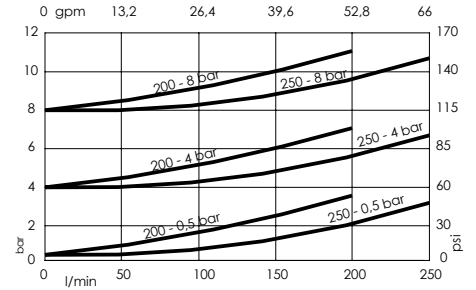
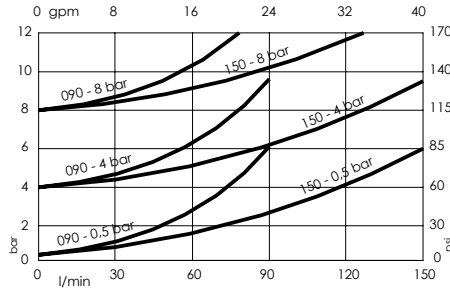
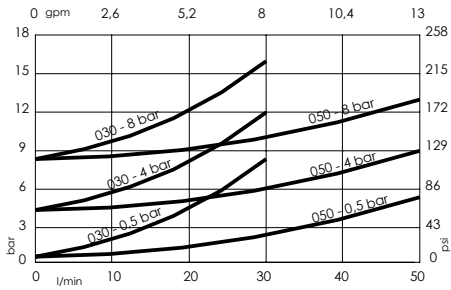
SPECIFICATIONS

Max. operating pressure:	450 bar (6500 psi)
Rated flow:	30 - 250 l/min (8 - 66 gpm)
Body:	Zinc plated steel
Weight:	0.09 - 1,47 kg (0,2 - 3,24 lbs)
Contamination class to ISO 4406:	See technical spec.
MTF _a :	150 - 1200 years: See technical spec.

NOTES:

For other configurations/quick codes not available in this catalogue page please consult factory

CURVES



ORDERING CODES

Quick code	Description	Rated flow	Cracking pressure	Dimension			
				A	L	L1	HEX
CD000425	CDVN-030-PSNC-MF-G14-N008	30 l/min (8 gpm)	8 bar (100 psi)	G 1/4"	46 [1,81]	12 [0,47]	19 [0,75]
CD000424	CDVN-030-PSNC-MF-G14-N004	30 l/min (8 gpm)	4 bar (50 psi)	G 1/4"	46 [1,81]	12 [0,47]	19 [0,75]
CD000423	CDVN-030-PSNC-MF-G14-N000	30 l/min (8 gpm)	0,5 bar (5 psi)	G 1/4"	46 [1,81]	12 [0,47]	19 [0,75]
CD000428	CDVN-050-PSNC-MF-G38-N008	50 l/min (13 gpm)	8 bar (100 psi)	G 3/8"	50 [1,97]	12 [0,47]	24 [0,95]
CD000427	CDVN-050-PSNC-MF-G38-N004	50 l/min (13 gpm)	4 bar (50 psi)	G 3/8"	50 [1,97]	12 [0,47]	24 [0,95]
CD000426	CDVN-050-PSNC-MF-G38-N000	50 l/min (13 gpm)	0,5 bar (5 psi)	G 3/8"	50 [1,97]	12 [0,47]	24 [0,95]
CD000480	CDVN-090-PSNC-MF-G12-N010	90 l/min (24 gpm)	10 bar (145 psi)	G 1/2"	58 [2,28]	14 [0,55]	30 [1,18]
CD000136	CDVN-090-PSNC-MF-G12-N008	90 l/min (24 gpm)	8 bar (100 psi)	G 1/2"	58 [2,28]	14 [0,55]	30 [1,18]
CD000291	CDVN-090-PSNC-MF-G12-N004	90 l/min (24 gpm)	4 bar (50 psi)	G 1/2"	58 [2,28]	14 [0,55]	30 [1,18]
CD000142	CDVN-090-PSNC-MF-G12-N000	90 l/min (24 gpm)	0,5 bar (5 psi)	G 1/2"	58 [2,28]	14 [0,55]	30 [1,18]
CD000139	CDVN-150-PSNC-MF-G34-N008	150 l/min (40 gpm)	8 bar (100 psi)	G 3/4"	68 [2,68]	16 [0,63]	36 [1,42]
CD000292	CDVN-150-PSNC-MF-G34-N004	150 l/min (40 gpm)	4 bar (50 psi)	G 3/4"	68 [2,68]	16 [0,63]	36 [1,42]
CD000143	CDVN-150-PSNC-MF-G34-N000	150 l/min (40 gpm)	0,5 bar (5 psi)	G 3/4"	68 [2,68]	16 [0,63]	36 [1,42]
CD000140	CDVN-200-PSNC-MF-G10-N008	200 l/min (53 gpm)	8 bar (100 psi)	G 1"	87 [3,43]	18 [0,71]	46 [1,81]
CD000293	CDVN-200-PSNC-MF-G10-N004	200 l/min (53 gpm)	4 bar (50 psi)	G 1"	87 [3,43]	18 [0,71]	46 [1,81]
CD000144	CDVN-200-PSNC-MF-G10-N000	200 l/min (53 gpm)	0,5 bar (5 psi)	G 1"	87 [3,43]	18 [0,71]	46 [1,81]
CD000141	CDVN-250-PSNC-MF-G11-N008	250 l/min (66 gpm)	8 bar (100 psi)	G 1" 1/4	107 [4,21]	20 [0,79]	55 [2,17]
CD000294	CDVN-250-PSNC-MF-G11-N004	250 l/min (66 gpm)	4 bar (50 psi)	G 1" 1/4	107 [4,21]	20 [0,79]	55 [2,17]
CD000145	CDVN-250-PSNC-MF-G11-N000	250 l/min (66 gpm)	0,5 bar (5 psi)	G 1" 1/4	107 [4,21]	20 [0,79]	55 [2,17]