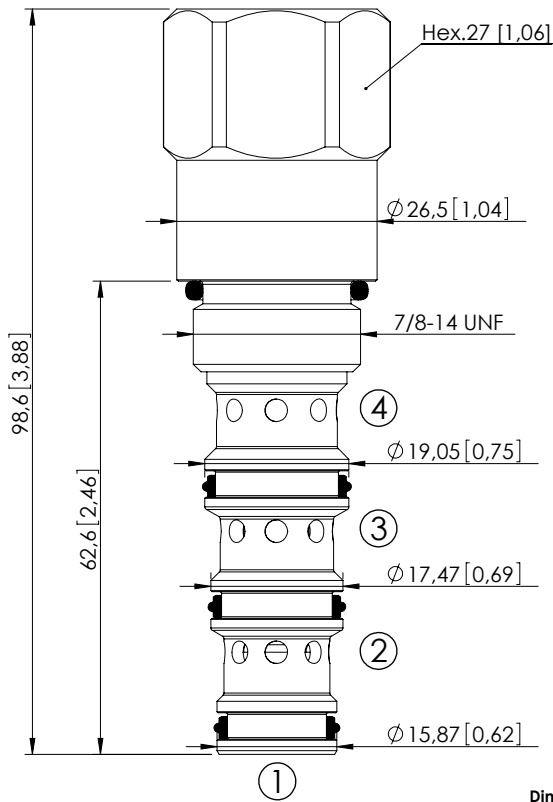
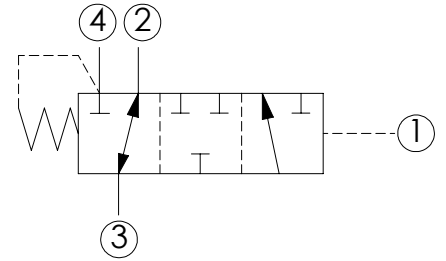


CDLN-040-CDTH

DIRECT ACTING
SPOOL TYPE



Dimensions: mm [inches]



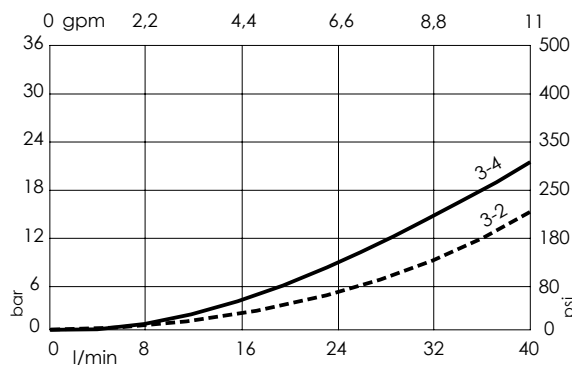
SPECIFICATIONS

Max. operating pressure:	350 bar (5000 psi)
Rated flow:	40 l/min (11 gpm)
Cavity:	SAE-10-4N
Weight:	0,23 kg (0,51 lbs)
Installation torque:	55 - 62 Nm (41 - 46 ft-lb)
Seal kit:	RB700102
Internal leakage:	50 cc/min 3,05 in ³ /min
Contamination class to ISO 4406:	See technical spec.
MTTF:	150 - 1200 years: See technical spec.

NOTES

For other configurations/quick codes not available in this catalogue page please consult factory

CURVES



ORDERING CODES

Quick code	Description	Cracking pressure
CD000377	CDLN-040-CDTH-FN-S10-N003	3 bar ± 1 (50 psi ± 15)
CD000261	CDLN-040-CDTH-FN-S10-N011	11 bar ± 1 (150 psi ± 15)
CD000343	CDLN-040-CDTH-FH-S10-N015	15 bar ± 1 (200 psi ± 15)
CD000276	CDLN-040-CDTH-FH-S10-N030	30 bar ± 1 (400 psi ± 15)
CD000262	CDLN-040-CDTH-FH-S10-N050	50 bar ± 1 (700 psi ± 15)