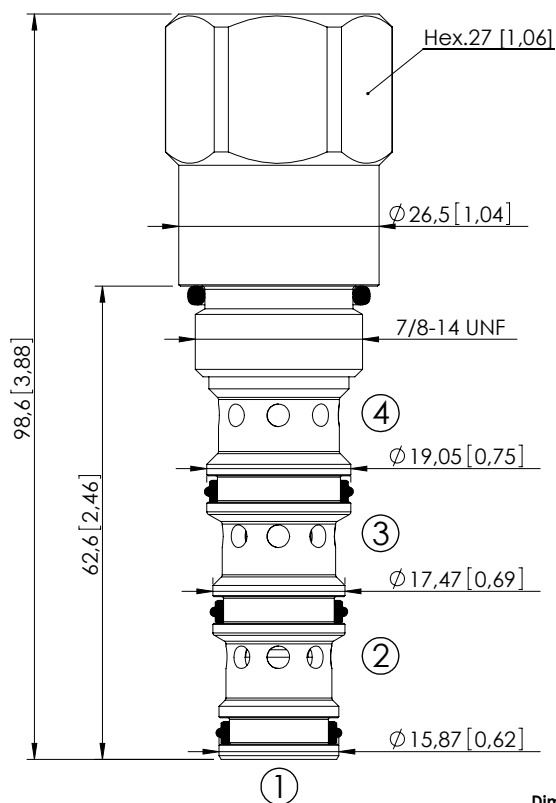
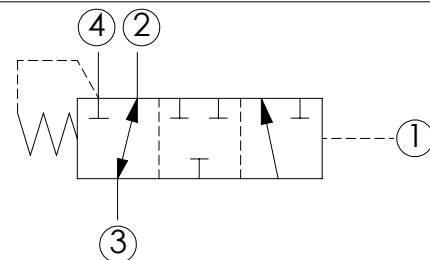


## CDLN-040-CDTH

DIRECT ACTING  
SPOOL TYPE

Dimensions: mm [inches]



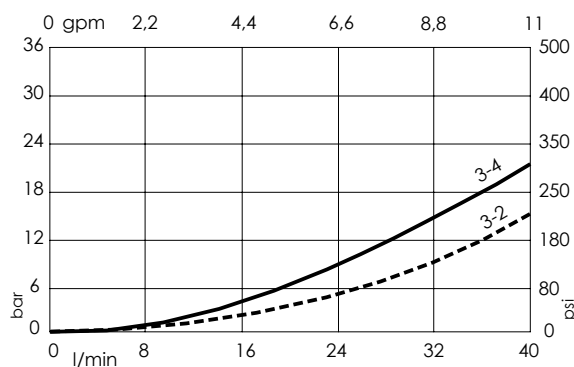
## SPECIFICATIONS

|                                  |  |
|----------------------------------|--|
| Max. operating pressure:         | 350 bar (5000 psi)                     |
| Rated flow:                      | 40 l/min (11 gpm)                      |
| Cavity:                          | SAE-10-4N                              |
| Weight:                          | 0,23 kg (0,51 lbs)                     |
| Installation torque:             | 55 - 62 Nm (41 - 46 ft-lb)             |
| Seal kit:                        | RB700102                               |
| Internal leakage:                | 50 cc/min<br>3,05 in <sup>3</sup> /min |
| Contamination class to ISO 4406: | See technical spec.                    |
| MTTF <sub>d</sub> :              | 150 years                              |

## NOTES

For other configurations/quick codes not available in this catalogue page please consult factory

## CURVES



## ORDERING CODES

| Quick code | Description               | Cracking pressure                    |  |
|------------|---------------------------|--------------------------------------|--|
| CD000377   | CDLN-040-CDTH-FN-S10-N003 | 3 bar $\pm$ 1<br>(50 psi $\pm$ 15)   |  |
| CD000261   | CDLN-040-CDTH-FN-S10-N011 | 11 bar $\pm$ 1<br>(150 psi $\pm$ 15) |  |
| CD000343   | CDLN-040-CDTH-FH-S10-N015 | 15 bar $\pm$ 1<br>(200 psi $\pm$ 15) |  |
| CD000276   | CDLN-040-CDTH-FH-S10-N030 | 30 bar $\pm$ 1<br>(400 psi $\pm$ 15) |  |
| CD000262   | CDLN-040-CDTH-FH-S10-N050 | 50 bar $\pm$ 1<br>(700 psi $\pm$ 15) |  |