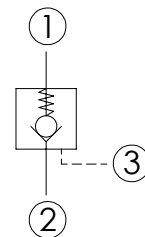
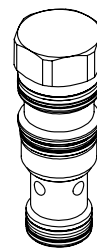
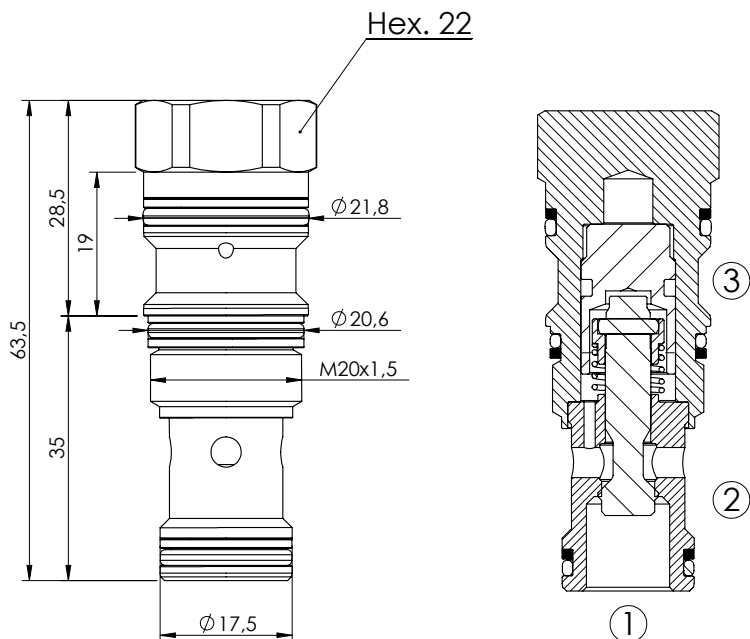


# PILOTED CHECK VALVE

## CDPN-060-PSGR

### INTEGRAL PILOT PISTON



### SPECIFICATIONS

Max. operating pressure: 350 bar

Rated flow: 60 l/min

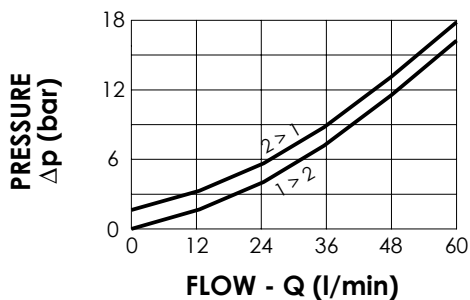
Cavity: VP000161

Weight: 0,12 kg

Pilot ratio: 3.2 : 1

### NOTES

Installation torque: 50 - 57 Nm



### ORDERING CODES

Quick code	Description	Cracking pressure (bar)	O-Ring on pilot piston	
CD000227	CDPN-060-PSGM-03-161-N002	5	YES	