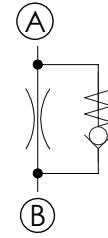
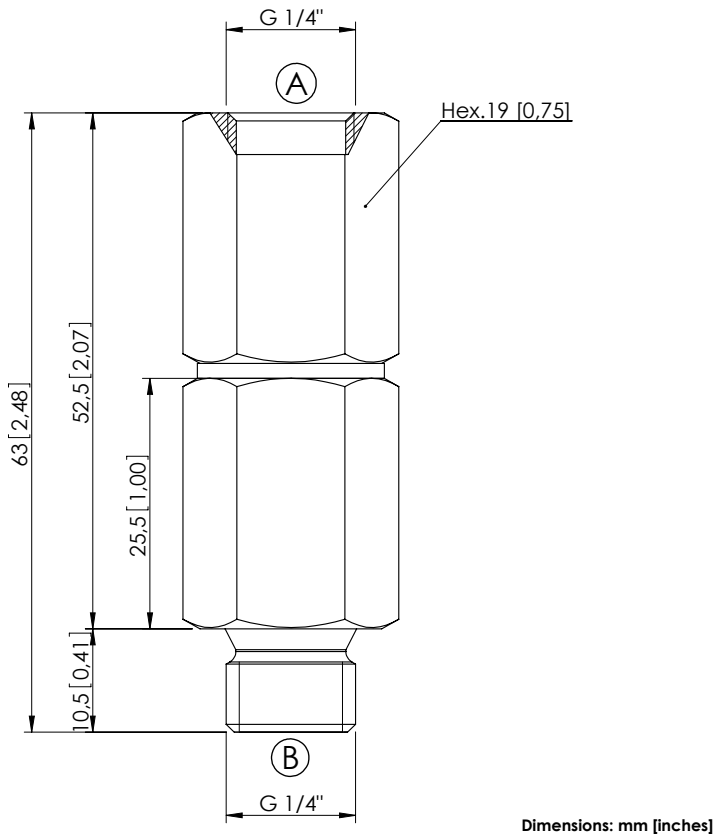


FLOW RESTRICTOR

CDFN-010-PSNC

MONO DIRECTIONAL
NOT COMPENSATED



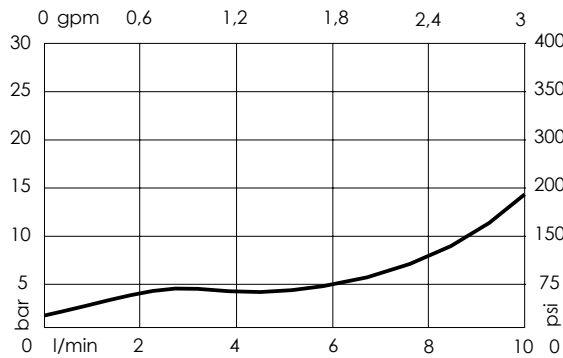
SPECIFICATIONS

Max. operating pressure:	350 bar (5000 psi)
Rated flow (A to B):	10 l/min (3 gpm)
Material:	Steel
Weight:	0,11 kg (0,24 lbs)
Contamination class to ISO 4406:	See technical spec.
MTTFa:	150 years

NOTES

For other configurations/quick codes not available in this catalogue page please consult factory

CURVES



Quick code	Description	Cracking Pressure	Ports	Ø Hole
CD000084	CDFN-010-PSNC-05-G14-N350	5 bar (75 psi)	A,B: G 1/4"	0,5 mm (0,019 inch)
CD000085	CDFN-010-PSNC-06-G14-N350	5 bar (75 psi)	A,B: G 1/4"	0,6 [0,023]
CD000086	CDFN-010-PSNC-07-G14-N350	5 bar (75 psi)	A,B: G 1/4"	0,7 [0,027]
CD000087	CDFN-010-PSNC-08-G14-N350	5 bar (75 psi)	A,B: G 1/4"	0,8 [0,031]
CD000089	CDFN-010-PSNC-10-G14-N350	5 bar (75 psi)	A,B: G 1/4"	1 [0,039]
CD000091	CDFN-010-PSNC-13-G14-N350	5 bar (75 psi)	A,B: G 1/4"	1,3 [0,051]
CD000167	CDFN-010-PSNC-03-G14-N350	5 bar (75 psi)	A,B: G 1/4"	0,5 & wire 0,4 [0,019 & wire 0,016]
CD000168	CDFN-010-PSNC-04-G14-N350	5 bar (75 psi)	A,B: G 1/4"	0,6 & wire 0,4 [0,023 & wire 0,016]