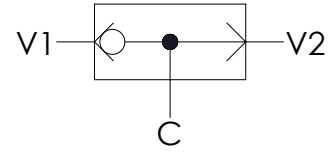
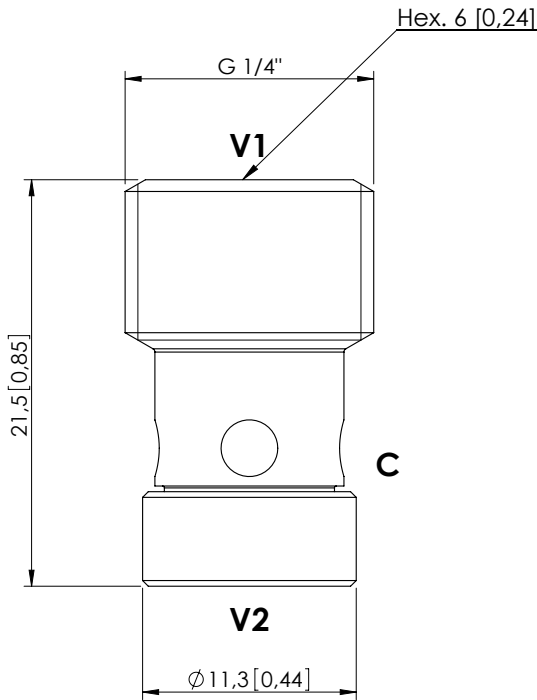


CDSN-030-SSNS

INSERT TYPE



SPECIFICATIONS

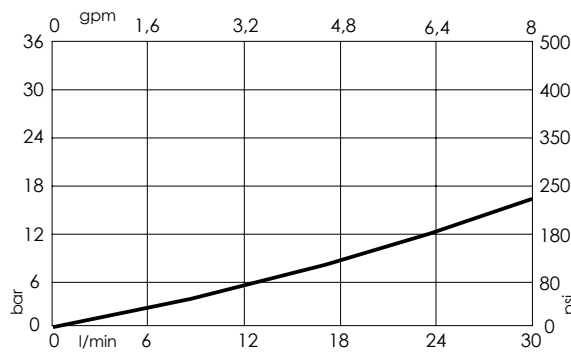
| | |
|----------------------------------|---------------------------------------|
| Max. operating pressure: | 350 bar (5000 psi) |
| Rated flow: | 30 l/min (8 gpm) |
| Cavity: | VP000079 |
| Weight: | 0,01 kg (0,02 lbs) |
| Installation torque: | 14 - 16 Nm (10 - 12 ft-lb) |
| Contamination class to ISO 4406: | See technical spec. |
| MTF _a : | 150 - 1200 years: See technical spec. |

Dimensions: mm [inches]

NOTES

For other configurations/quick codes not available in this catalogue page please consult factory

CURVES



ORDERING CODES

| Quick code | Description |
|------------|---------------------------|
| CD000045 | CDSN-030-SSNS-FN-079-N000 |
| | |
| | |
| | |
| | |
| | |