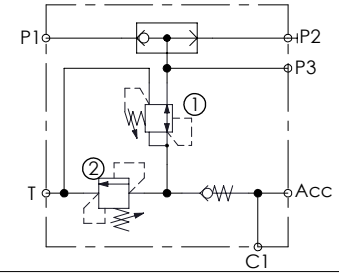
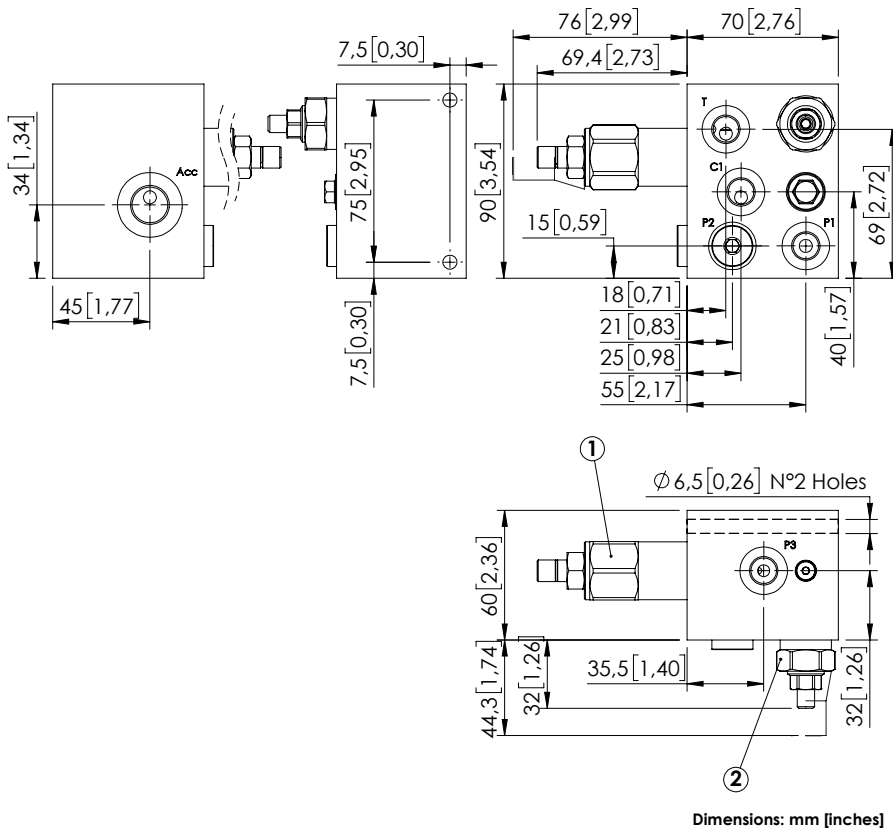


# BPRD-010-ALLS



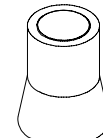
## SPECIFICATIONS

Max. operating pressure:	350 bar (5000 psi)
Rated flow:	10 l/min (3 gpm)
Weight:	3 kg (6,6 lbs)
Manifold:	Steel
Contamination class to ISO 4406:	See technical spec.
MTF <sub>d</sub> :	150 - 1200 years: See technical spec.

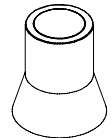
## NOTES

For other configurations/quick codes not available in this catalogue page please consult factory

## SEALING CAP

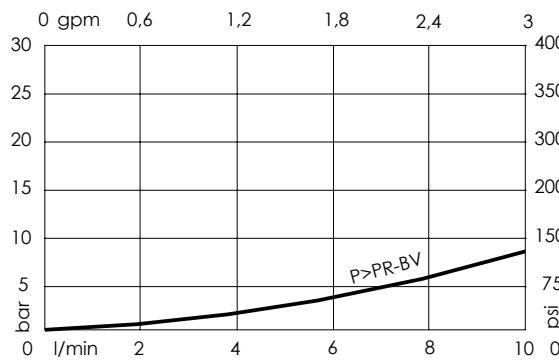


Ordering code:  
AT000020  
(Valve n°2)



Ordering code:  
AT000021  
(Valve n°1)

## CURVES



## ORDERING CODES

Quick code	Description	Ports	Standard setting Q=5 l/min (1,3 gpm)	Setting range	Pressure increase bar/turn (psi/turn)
BP000113	BPRD-010-ALLS-NP-G14-N350	P1,P2,P3,C1,T: G 1/4" Acc: M18x1,5	① 35 bar (500 psi) ② 50 bar (700 psi)	① 20-75 bar (300-1100 psi) ② 10-70 bar (150-1000 psi)	① 11 (150) ② 26 (400)