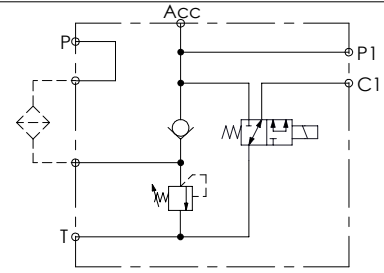
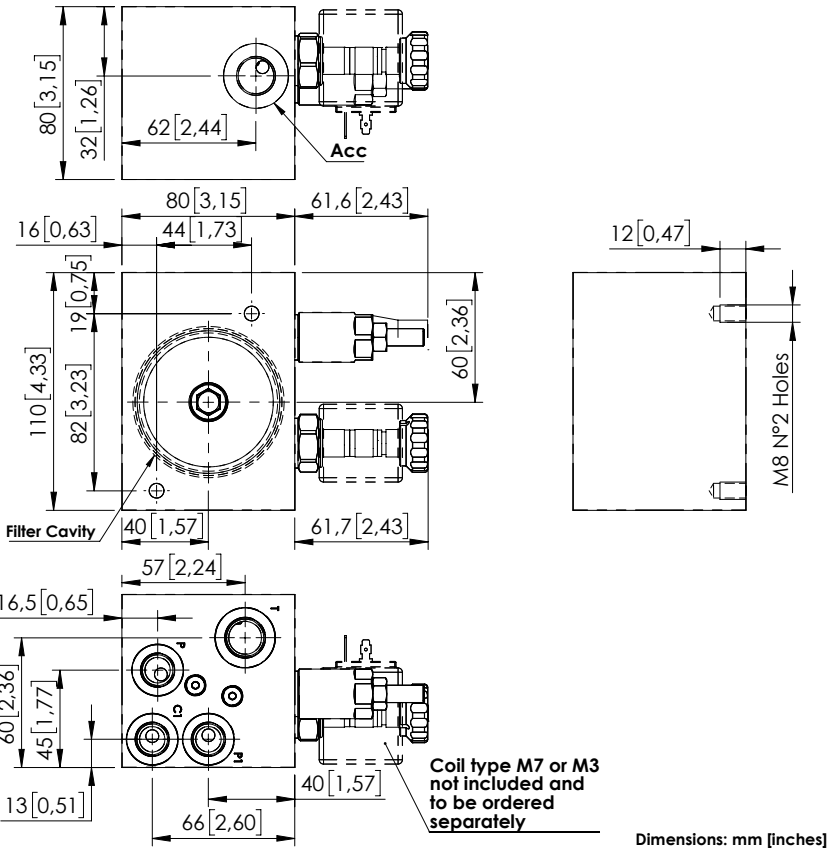


# BPND-025-LLEM



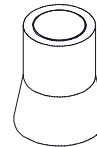
## SPECIFICATIONS

Max. operating pressure:	100 bar (1500 psi)
Rated flow:	25 l/min (7 gpm)
Weight:	0,9 kg (1,9 lbs)
Manifold:	Aluminium
Contamination class to ISO 4406:	See technical spec.
MTF <sub>d</sub> :	150 - 1200 years: See technical spec.

## NOTES

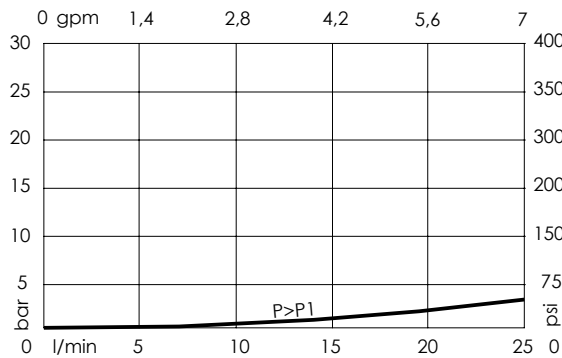
For filter cavity information or special version ask AFT sales network.  
 See chapter 21.00.000 for coil.  
 For other configurations/quick codes not available in this catalogue page please consult factory

## SEALING CAP



Ordering code:  
AT000020

## CURVES



## ORDERING CODES

Quick code	Description	Ports	Standard setting Q=5 l/min (1,3 gpm)	Setting range	Pressure increase
BP000108	BPND-025-LLEM-NP-J38-N100	C1,P1,P: 1/4" JIS T: 3/8" JIS	25 bar (350 psi)	10-50 bar (150-700 psi)	10 bar/turn (150 psi/turn)