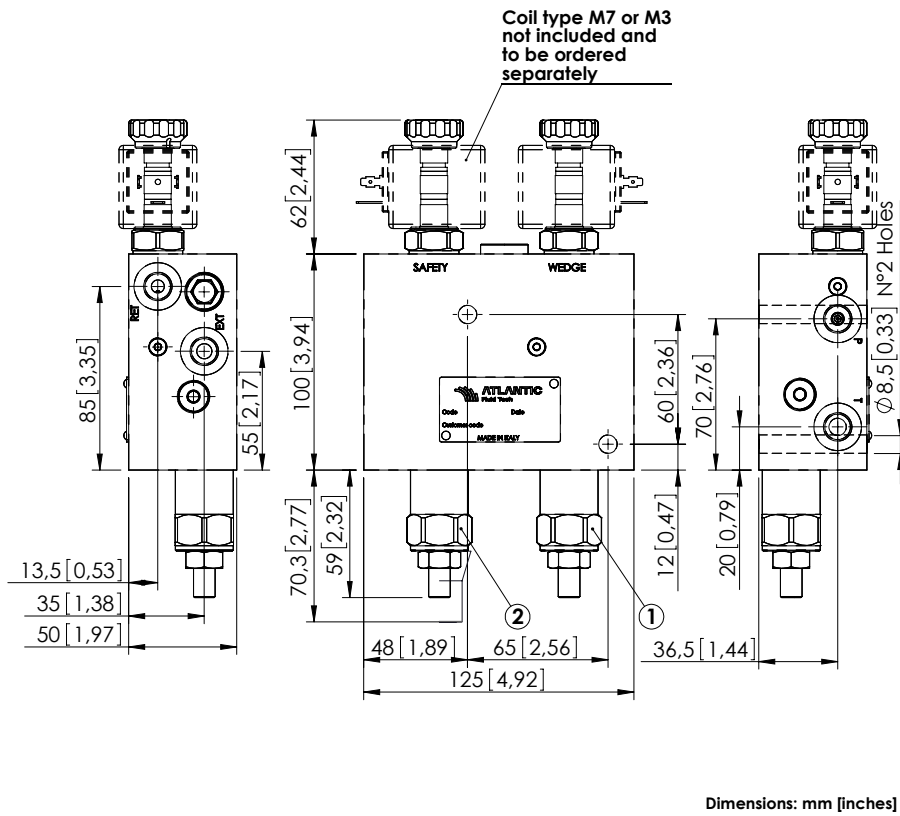
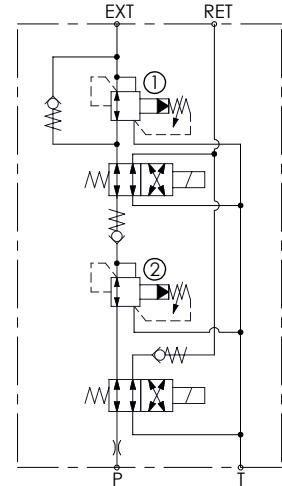


BDEN-010-ALRU

AUXILIARY
QUICK HITCH



Dimensions: mm [inches]



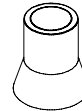
SPECIFICATIONS

Max. operating pressure:	350 bar (5000 psi)
Rated flow:	10 l/min (3 gpm)
Manifold:	Steel
Weight:	4,9 kg (10,8 lbs)
Coil type:	M7 or M3 type
Contamination class to ISO 4406:	See technical spec.
MTTFd:	150 - 1200 years: See technical spec.

NOTES

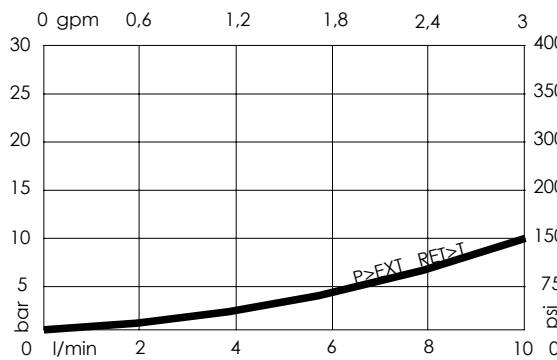
For other configurations/quick codes not available in this catalogue page please consult factory

SEALING CAP



Ordering code:
AT000022

CURVES



ORDERING CODES

Quick code	Description	Ports	Standard setting Q=5 l/min (1,3 gpm)	Adjustment range	Pressure increase
BD000207	BDEN-010-ALRU-NP-G14-N350	P,T,A,B,M: G 1/4"	①:120 bar (1700 psi) ②:240 bar (3500 psi)	70-350 bar (1000-5000 psi)	114 bar/turn (1600 psi/turn)