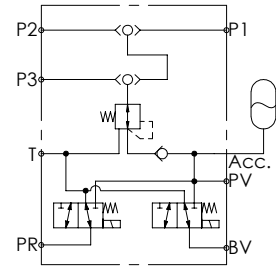
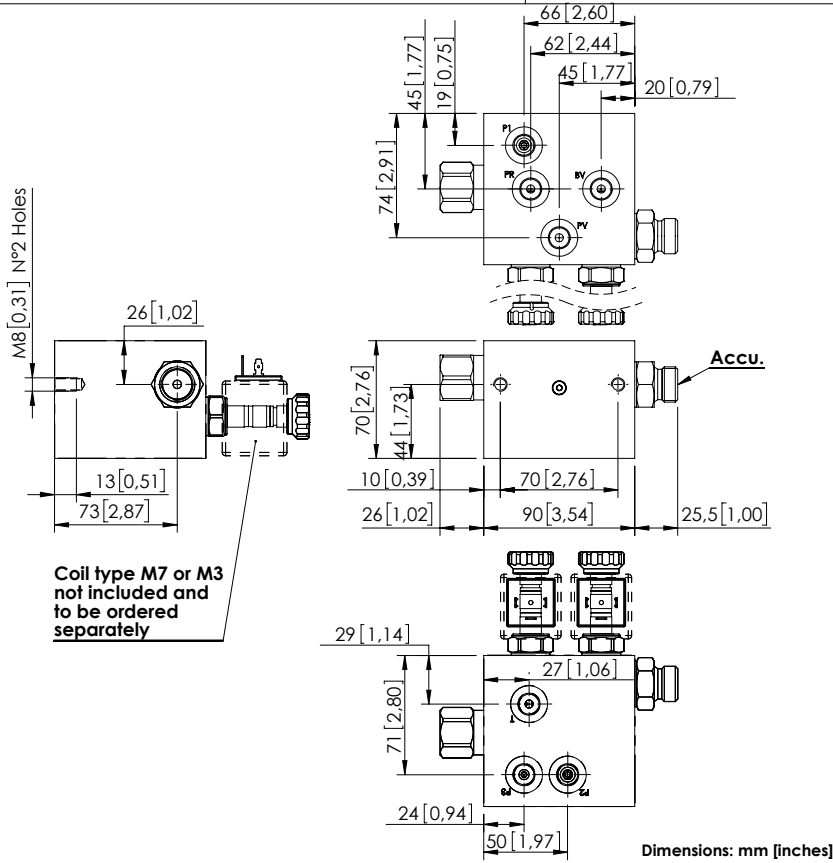


BDEN-015-XLRS

PILOT MANIFOLD



SPECIFICATIONS

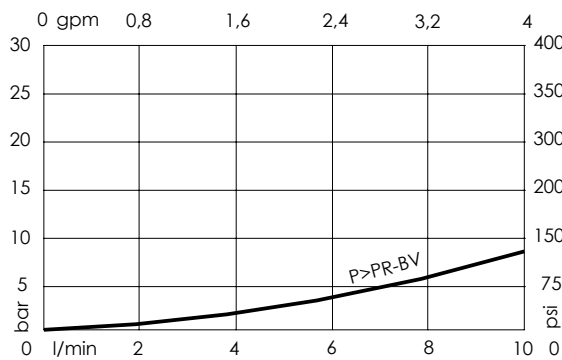
Max. operating pressure:	See table
Rated flow:	15 l/min (4 gpm)
Rated flow from accumulator:	45 l/min (12 gpm)
Weight:	4,5/1,9 kg (9,9/4,2 lbs)
Coil type:	M7 or M3 type
Contamination class to ISO 4406:	See technical spec.
MTTF _a :	150 - 1200 years: See technical spec.

NOTES

Pressure reducing valve with stabilization system.
Other coil/voltage available on request.
See chapter 21.00.000 for coil.

For other configurations/quick codes not available in this catalogue page please consult factory

CURVES



ORDERING CODES

Quick code	Description	Ports	Manifold	Max. pressure operating	Standard setting
BD000205	BDEN-015-ALRS-NP-G14-N350	P1,P2,P3,PR,PV,BV,T: G 1/4" Acc: G 1/2"	Steel	350 bar (5000 psi)	35 bar (500 psi)
BD000206	BDEN-015-LLRS-NP-G14-N210	P1,P2,P3,PR,PV,BV,T: G 1/4" Acc: G 1/2"	Aluminium	210 bar (3000 psi)	35 bar (500 psi)