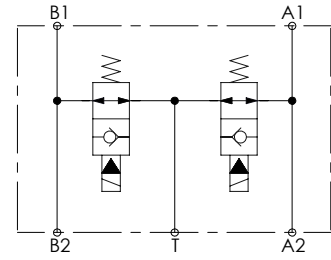
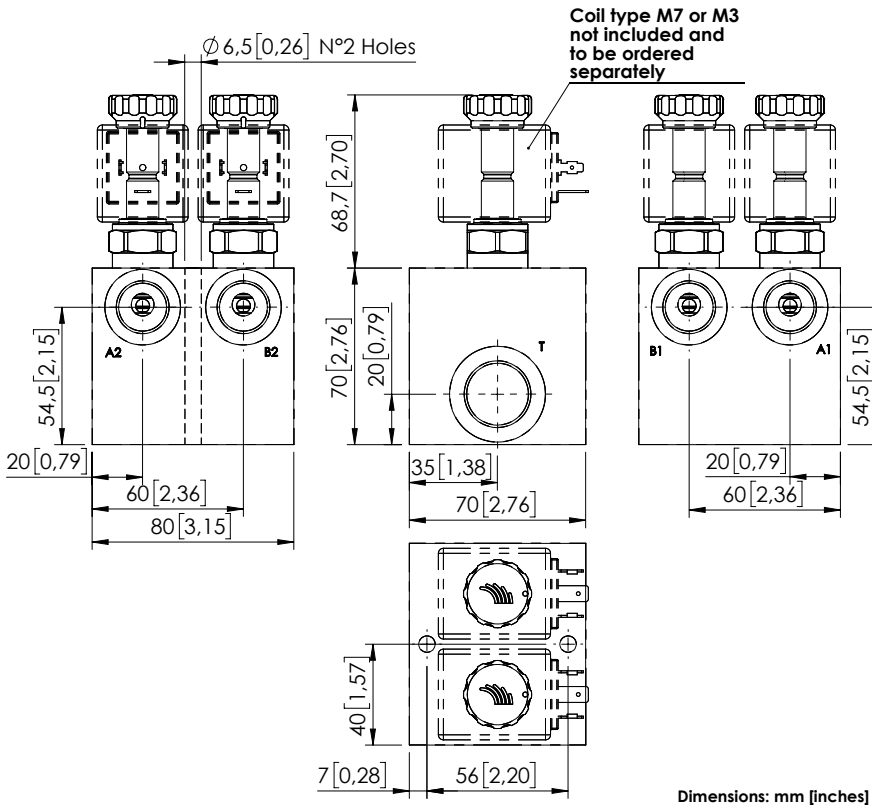


UNLOADING VALVE

BDEN-040-LLEI



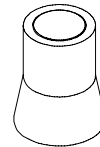
SPECIFICATIONS

Max. operating pressure:	210 bar (3000 psi)
Rated flow:	40 l/min (11 gpm)
Manifold:	Aluminium
Weight:	1,11 kg (2,4 lbs)
Coil type:	M7 or M3 type
Contamination class to ISO 4406:	See technical spec.
MTTFa:	150 - 1200 years: See technical spec.

NOTES

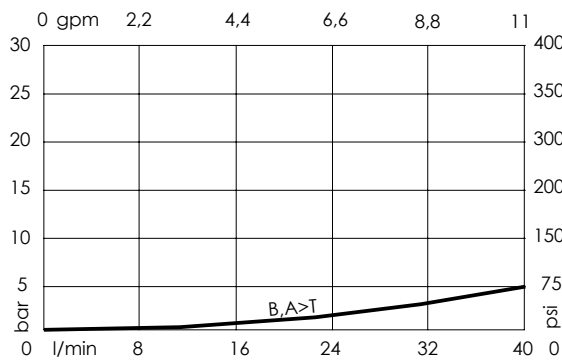
See chapter 21.00.000 for coil.
For other configurations/quick codes not available in this catalogue page please consult factory

SEALING CAP



Ordering code:
AT000020

CURVES



ORDERING CODES

Quick code	Description	Ports
BD000200	BDEN-040-LLEI-NP-G12-N210	A1,A2,B1,B2: G 1/2" T: G 3/4"