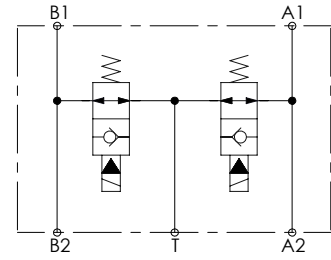
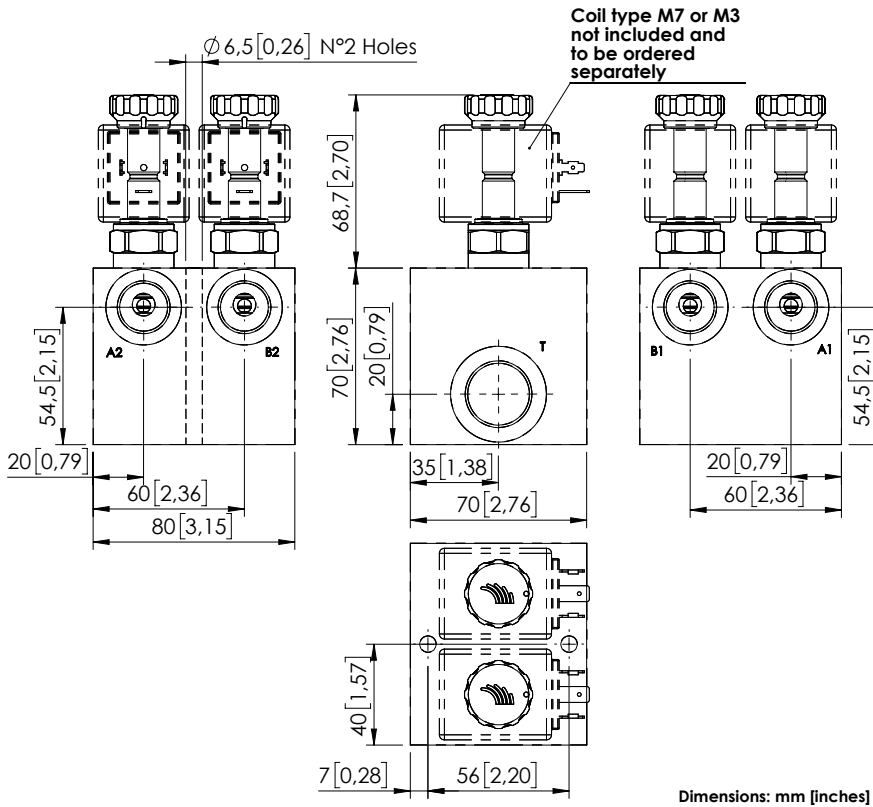


UNLOADING VALVE

BDEN-040-LLEI



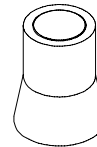
SPECIFICATIONS

| | |
|----------------------------------|---------------------|
| Max. operating pressure: | 210 bar (3000 psi) |
| Rated flow: | 40 l/min (11 gpm) |
| Manifold: | Aluminium |
| Weight: | 1,1 kg (2,4 lbs) |
| Coil type: | M7 or M3 type |
| Contamination class to ISO 4406: | See technical spec. |
| MTF _d : | 150 years |

NOTES

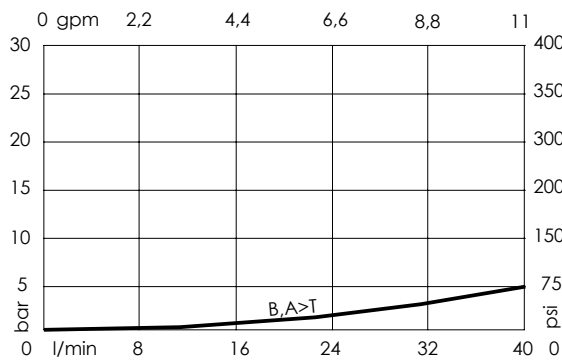
See chapter 21.00.000 for coil.
For other configurations/quick codes not available in this catalogue page please consult factory

SEALING CAP



Ordering code:
AT000020

CURVES



ORDERING CODES

| Quick code | Description | Ports |
|------------|---------------------------|----------------------------------|
| BD000200 | BDEN-040-LLEI-NP-G12-N210 | A1,A2,B1,B2: G 1/2" T: G 3/4" |
| | | |
| | | |
| | | |
| | | |