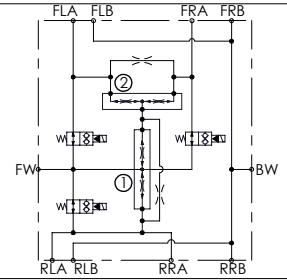
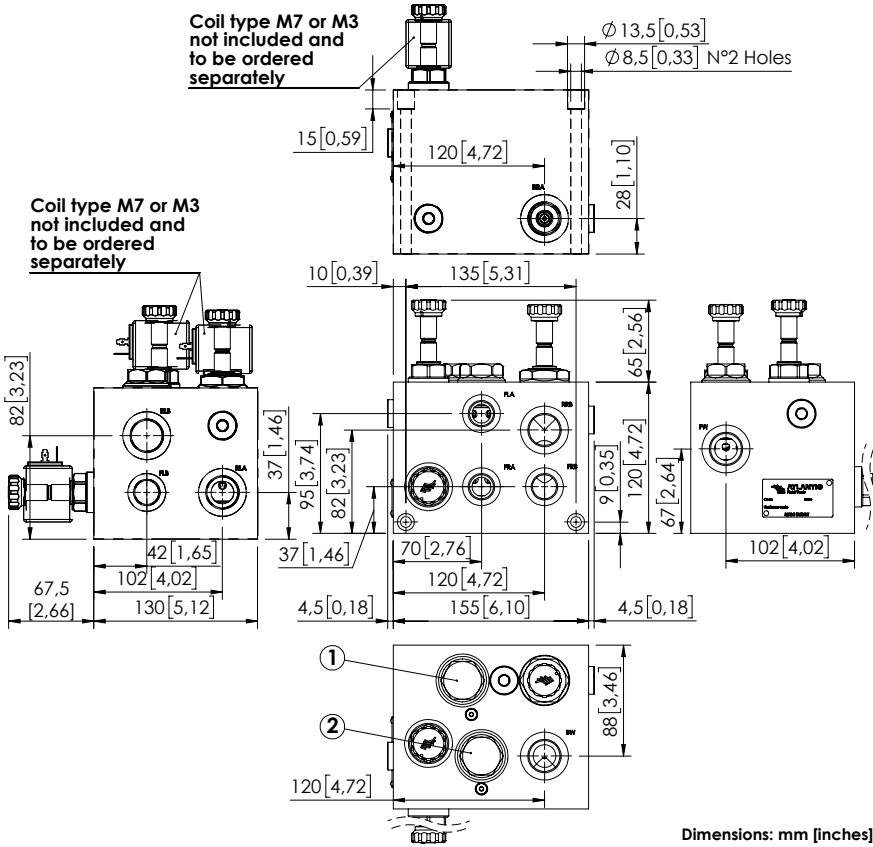


DIFFERENTIAL LOCK VALVE

BDEN-200-ALED

**WITH ELECTRIC BYPASS
FOR THREE MOTORS
TRANSMISSION**



SPECIFICATIONS

Max. operating pressure:	500 bar (7000 psi)
Rated flow:	200 l/min (53 gpm)
Weight:	16,7 kg (36,8 lbs)
Manifold:	Steel
Coil type:	M7 or M3 type
Contamination class to ISO 4406:	See technical spec.
MTTFa:	150 - 1200 years: See technical spec.

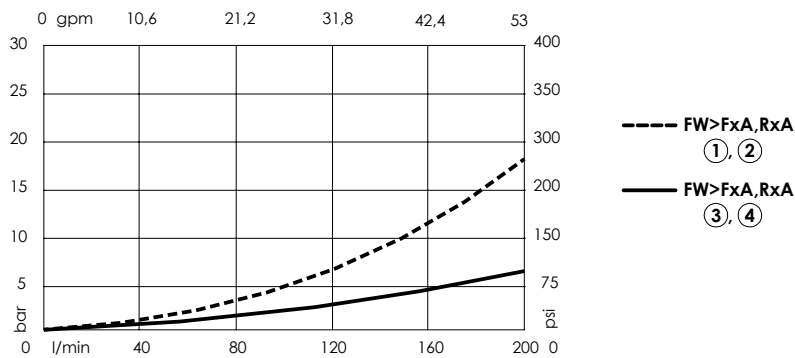
NOTES

For other flow ranges contact AFT sales network.

See chapter 21.00.000 for coil.

For other configurations/quick codes not available in this catalogue page please consult factory

CURVES



ORDERING CODES

Quick code	Description	Ports	Flow diverter ratio	Inlet range flow
BD000199	BDEN-200-ALED-NP-G34-N500	FW,BW,RLA,RLB,RRA,RRB: G 3/4" FLA,FLB,FRA,FRB: G 1/2"	①: 50%-50% ②: 33%-66%	48-170 l/min (13-45 gpm)