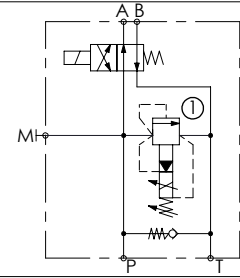
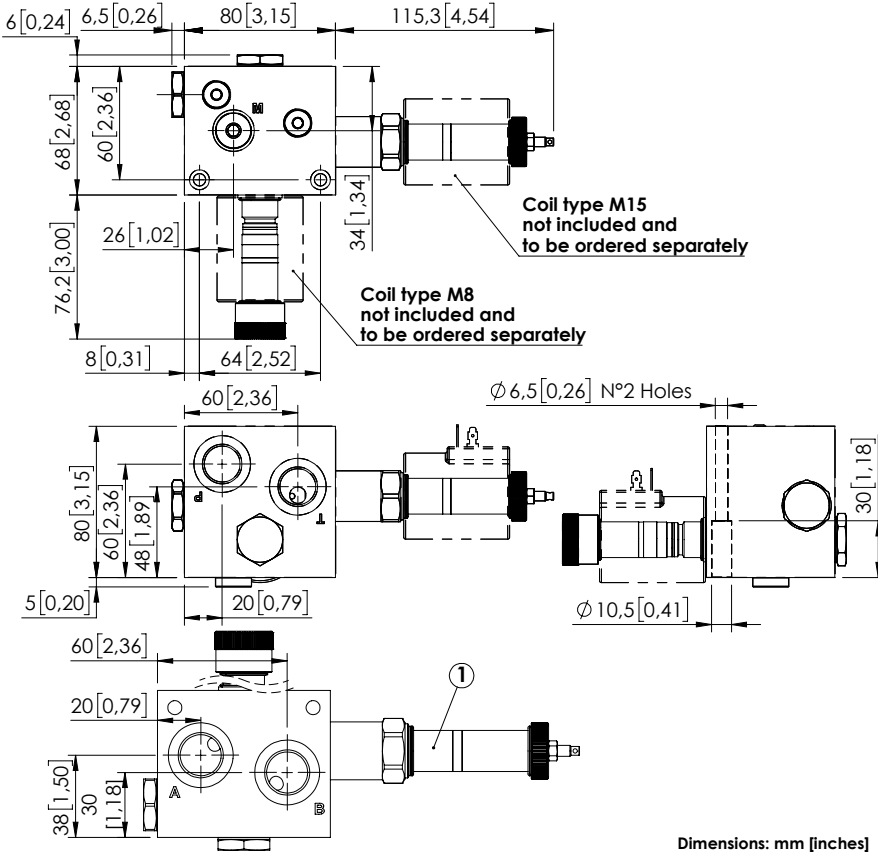


FAN DRIVE BLOCKS

BDFN-045-GLNU

PROPORTIONAL
PRESSURE CONTROL
WITH INVERSION



SPECIFICATIONS

Max. operating pressure:	320 bar (4600 psi)
Rated flow:	45 l/min (12 gpm)
Weight:	3,28 kg (7,2 lbs)
Manifold:	Cast Iron
Coil type:	M15 - M8
Contamination class to ISO 4406:	See technical spec.
MTTf:	150 - 1200 years: See technical spec.

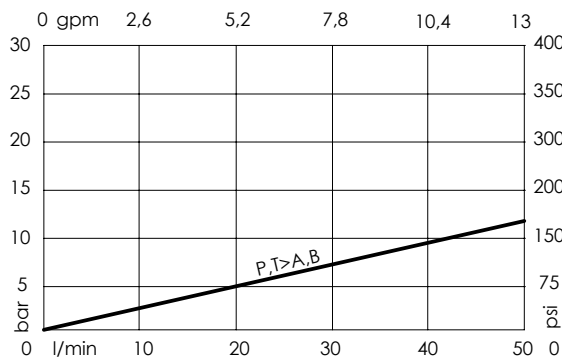
NOTES

When valve n°1 is energize the pressure lower from the setting to.

See chapter 21.00.000 for coil.

For other configurations/quick codes not available in this catalogue page please consult factory

CURVES



ORDERING CODES

Quick code	Description	Ports	Standard setting	Setting range
BD000198	BDFN-045-GLNU-NP-G12-N320	P,T,A,B: G 1/2" M: G 1/4"	210 bar (3000 psi)	100-320 l/min (1500-4600 gpm)