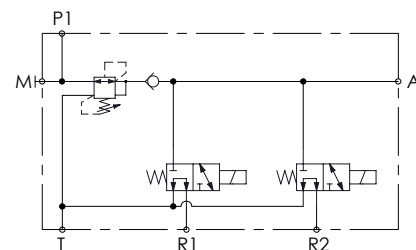
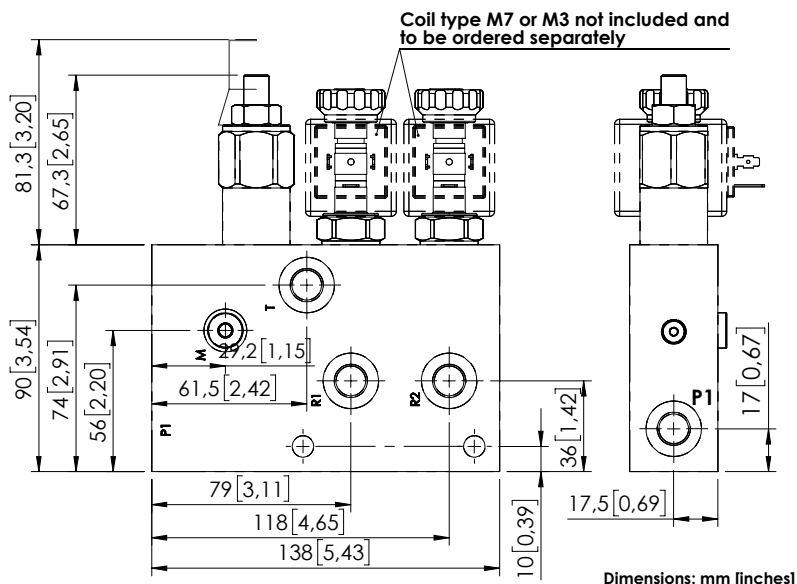
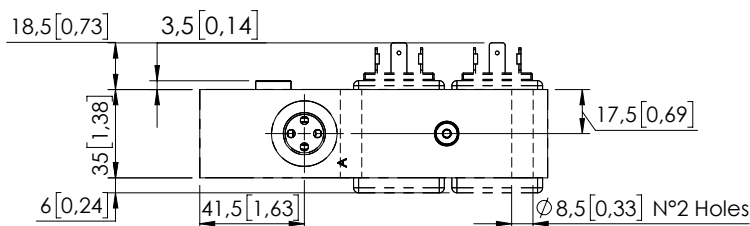


PILOT BLOCK

BDEN-010-ALRU

JOYSTICK SAFETY STOP
SOLENOID OPERATED



SPECIFICATIONS

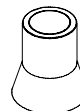
Max. operating pressure:	210 bar (3000 psi)
Rated flow:	10 l/min (3 gpm)
Manifold:	Steel
Weight:	1,56 kg (3,4 lbs)
Contamination class to ISO 4406:	See technical spec.
MTTFd:	150 years

NOTES

See chapter 21.00.000 for coil.

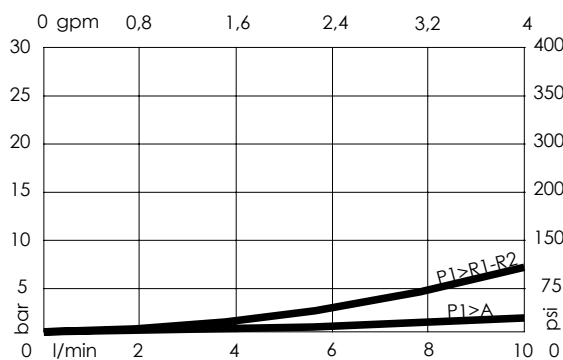
For other configurations/quick codes not available in this catalogue page please consult factory

SEALING CAP



Ordering code:
AT000021

CURVES



ORDERING CODES

Quick code	Description	Ports	Standard setting	Setting range	Pressure increase
BD000197	BDEN-010-ALRU-NP-G38-N210	R1,R2,T,P1: G1/4" A: G3/8" M: G1/8"	35 bar (500 psi)	10-50 bar (150-700 psi)	7 bar/turn (100 psi/turn)