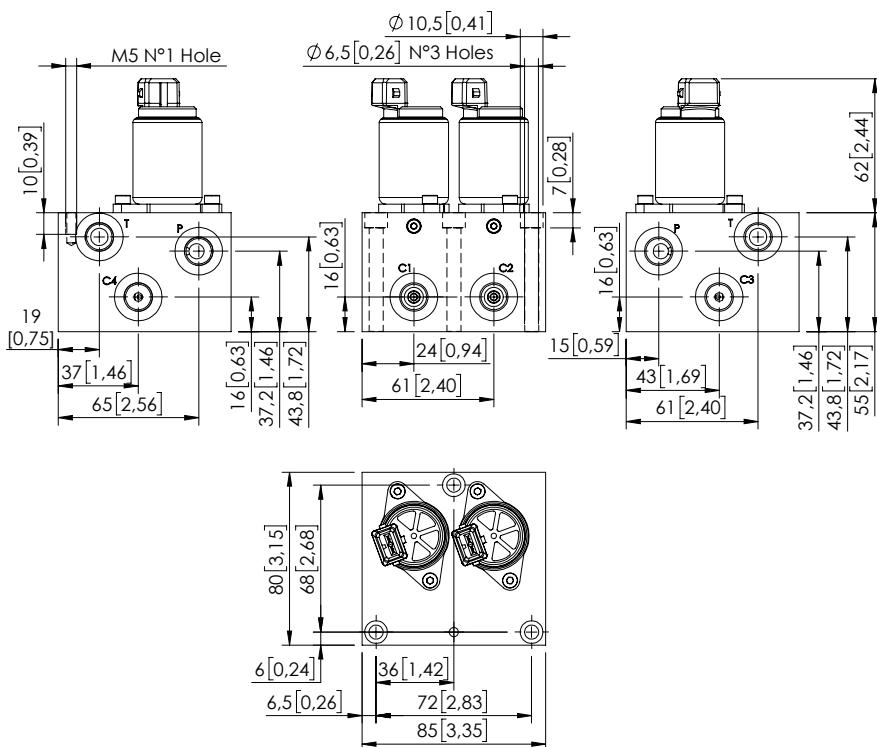


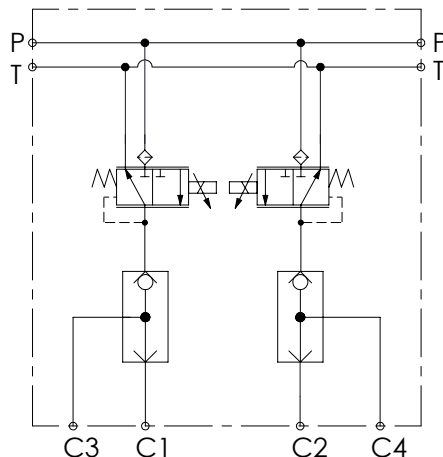
# PILOT BLOCK

## BDEZ-005-LLSI

PROPORTIONAL  
PRESSURE REDUCING  
PILOT MANIFOLD



Dimensions: mm [inches]



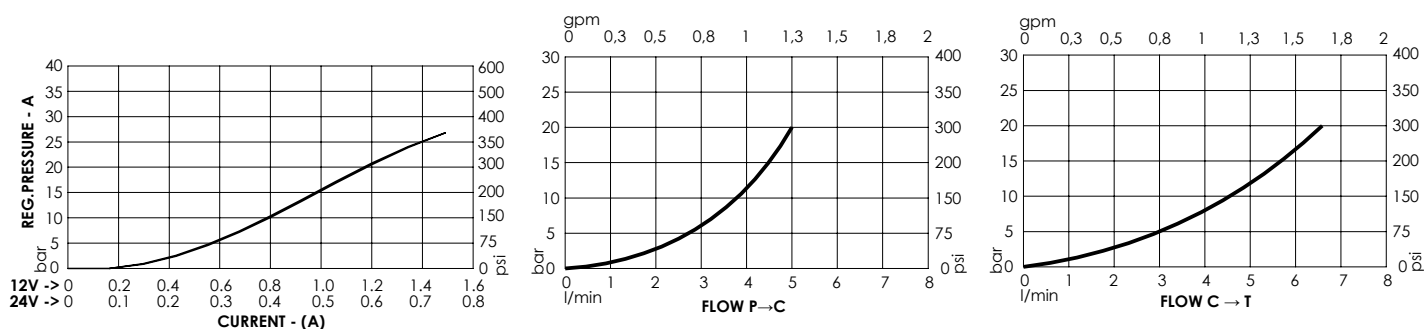
### SPECIFICATIONS

Max. operating pressure:	50 bar (700 psi)
Max. operating pressure on port T:	30 bar (400 psi)
Rated flow:	5 l/min (1,3 gpm)
Manifold:	Aluminium
Weight:	1,28 kg (61,7 lbs)
Contamination class to ISO 4406:	See technical spec.
MTTFd:	150 years

### NOTES

For other configurations/quick codes not available in this catalogue page please consult factory

### CURVES



### ORDERING CODES

Quick code	Description	Ports	Regulated pressure range	Voltage	Connector type
BD000142	BDEZ-005-LLSI-02-G14-N050-NBAJ	C,P,T: G 1/4"	0-25 bar (0-350 psi)	12V DC	AMP JUNIOR
BD000127	BDEZ-005-LLSI-02-G14-N050-NAAJ	C,P,T: G 1/4"	0-25 bar (0-350 psi)	24V DC	AMP JUNIOR