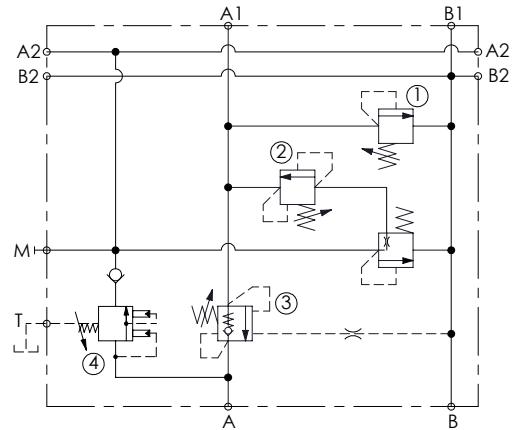
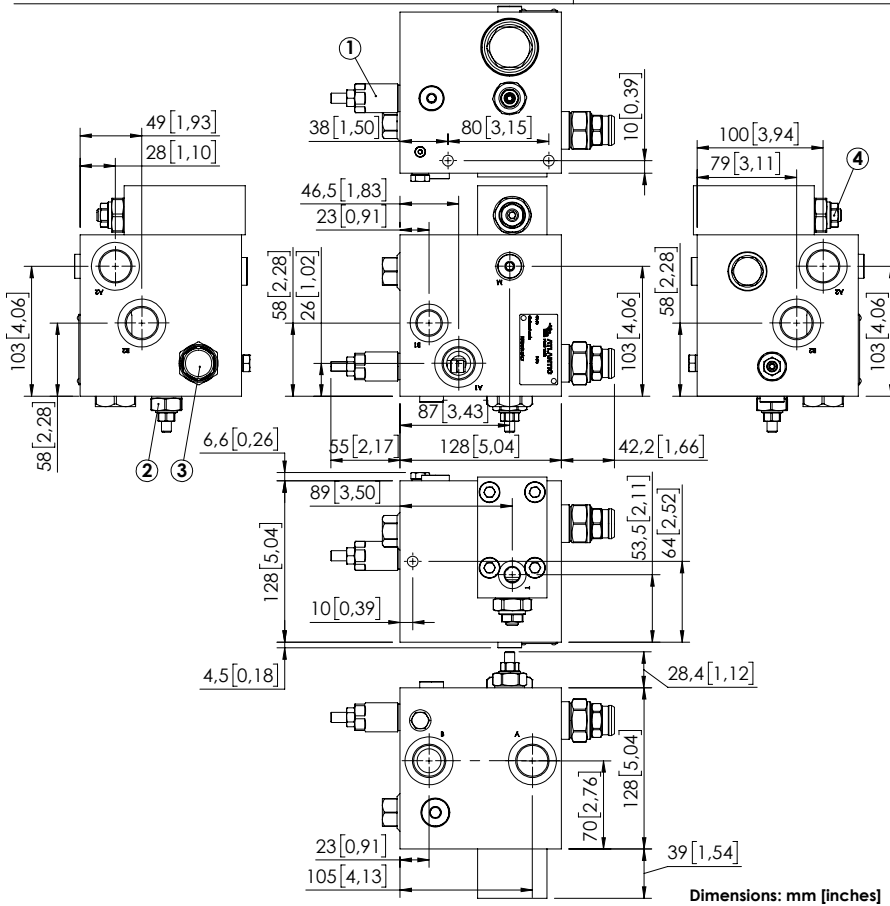


BDMN-150-NLBL



SPECIFICATIONS

Max. operating pressure:	350 bar (5000 psi)
Rated flow:	150 l/min (40 gpm)
Manifold:	Aluminium
Weight:	6,5 kg (14,3 lbs)
Contamination class to ISO 4406:	See technical spec.
MTF _a :	150 - 1200 years: See technical spec.

NOTES

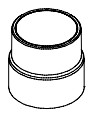
For other configurations/quick codes not available in this catalogue page please consult factory

SEALING CAP

Ordering code:
AT000022
(Valves n°1,2)



Ordering code:
ST000012
(Valve n°3)



CURVES

ORDERING CODES

Quick code	Description	Pilot ratio	Ports	Standard setting Q=5 l/min (1,3 gpm)	Adjustment range	Pressure increase bar/turn (psi/turn)
BD000131	BDMN-150-NLBL-NP-G34-N350	4:1	A,A1,A2,B,B1,T: G3/4" B1: G1/2" T,M: G1/4"	① 280 bar (4000 psi) ② 50 bar (700 psi) ③ 230 bar (3300 psi) ④ 175 bar (2500 psi)	① 100-350 bar (1500-5000 psi) ② 90-210 bar (1300-3000 psi) ③ 60-210 bar (850-3000 psi) ④ 140-350 bar (2000-5000 psi)	① 91 (1300) ② 87 (1200) ③ 70 (700) ④ 70,5 (1000)