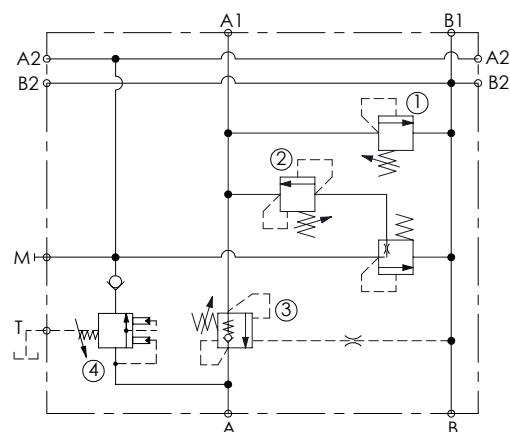
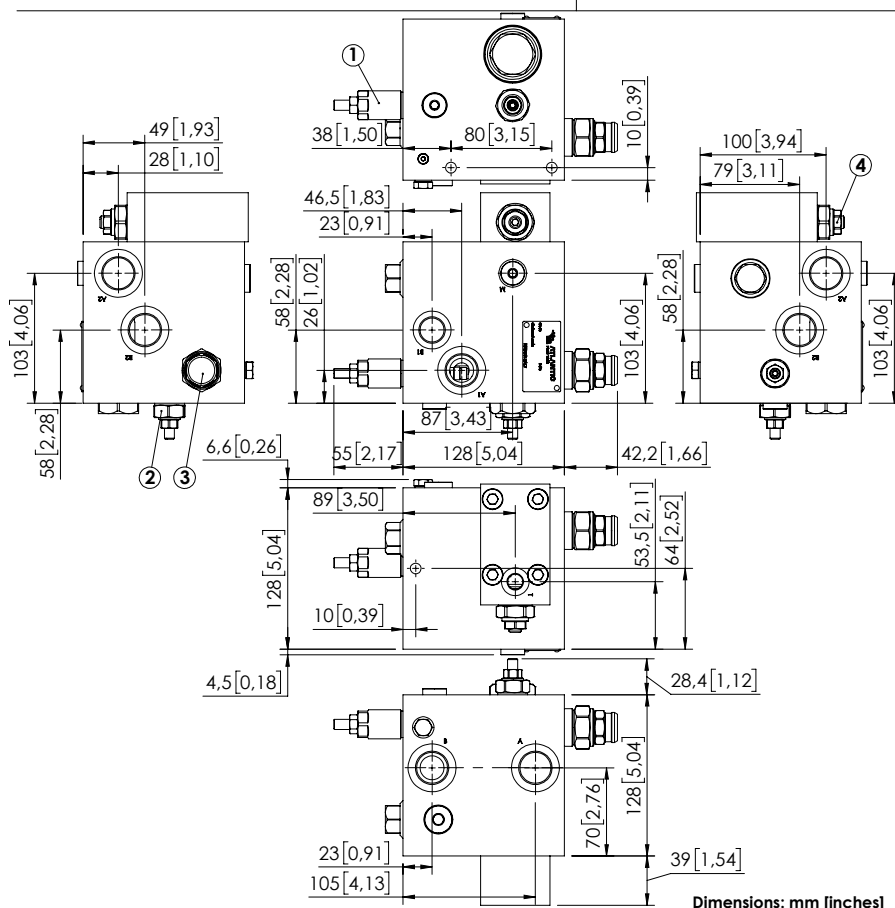


BDMN-150-NLBL



SPECIFICATIONS

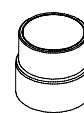
| | |
|----------------------------------|---------------------|
| Max. operating pressure: | 350 bar (5000 psi) |
| Rated flow: | 150 l/min (40 gpm) |
| Manifold: | Aluminium |
| Weight: | 6,5 kg (14,3 lbs) |
| Contamination class to ISO 4406: | See technical spec. |
| MTTFd: | 150 years |

SEALING CAP

Ordering code:
AT000022
(Valves n°1,2)



Ordering code:
ST000012
(Valve n°3)



NOTES

For other configurations/quick codes not available in this catalogue page please consult factory

CURVES

ORDERING CODES

| Quick code | Description | Pilot ratio | Ports | Standard setting Q=5 l/min (1,3 gpm) | Adjustment range | Pressure increase bar/turn (psi/turn) |
|------------|---------------------------|-------------|--|--|---|---|
| BD000131 | BDMN-150-NLBL-NP-G34-N350 | 4:1 | A,A1,A2,B,B1,T: G3/4" B1: G1/2" T,M: G1/4" | ① 280 bar (4000 psi) ② 50 bar (700 psi) ③ 230 bar (3300 psi) ④ 175 bar (2500 psi) | ① 100-350 bar (1500-5000 psi) ② 90-210 bar (1300-3000 psi) ③ 60-210 bar (850-3000 psi) ④ 140-350 bar (2000-5000 psi) | ① 91 (1300) ② 87 (1200) ③ 70 (700) ④ 70,5 (1000) |
| | | | | | | |
| | | | | | | |