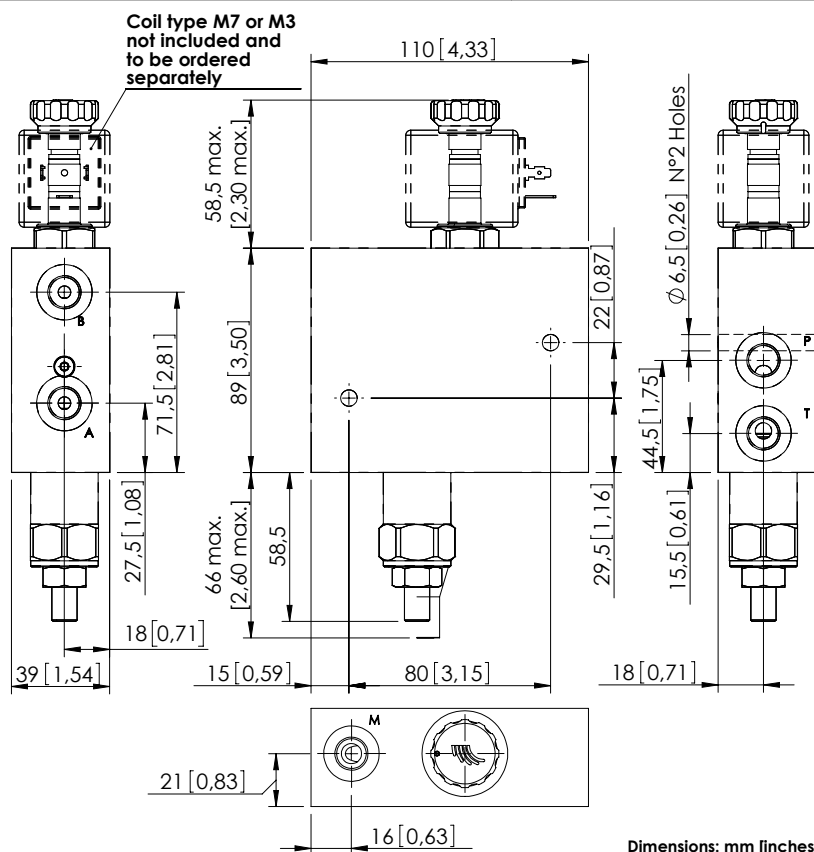
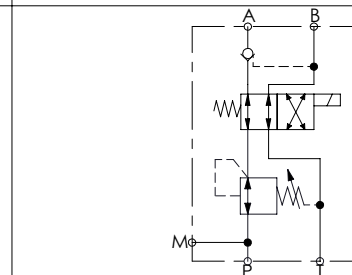
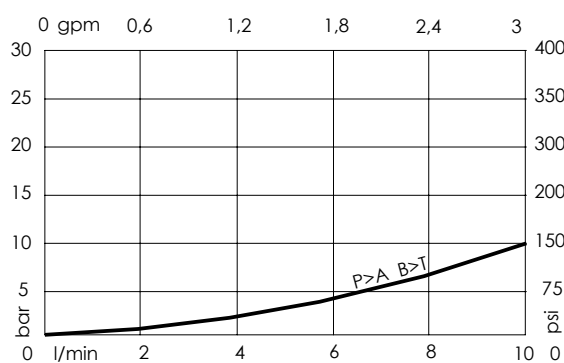
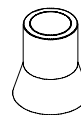


BDEF-010-ALRVAUXILIARY
QUICK HITCH**NOTES**

For other configurations/quick codes not available in this catalogue page please consult factory

CURVES**SPECIFICATIONS**

Max. operating pressure:	380 bar (5500 psi)
Rated flow:	10 l/min (3 gpm)
Manifold:	Steel
Weight:	3.0 kg (6.8 lbs)
Coil type:	M7 or M3 type
Contamination class to ISO 4406:	See technical spec.
MTTF _d :	150 - 1200 years: See technical spec.

SEALING CAP

Ordering code:
AT000022

ORDERING CODES

Quick code	Description	Ports	Standard setting Q=5 l/min (1.3 gpm)	Adjustment range	Pressure increase
BD000095	BDEN-010-ALRV-NP-G14-V380	P,T,A,B,M: G 1/4"	340 bar (4900 psi)	70-350 bar (1000-5000 psi)	114 bar/turn (1600 psi/turn)