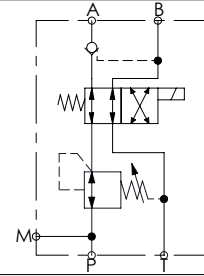
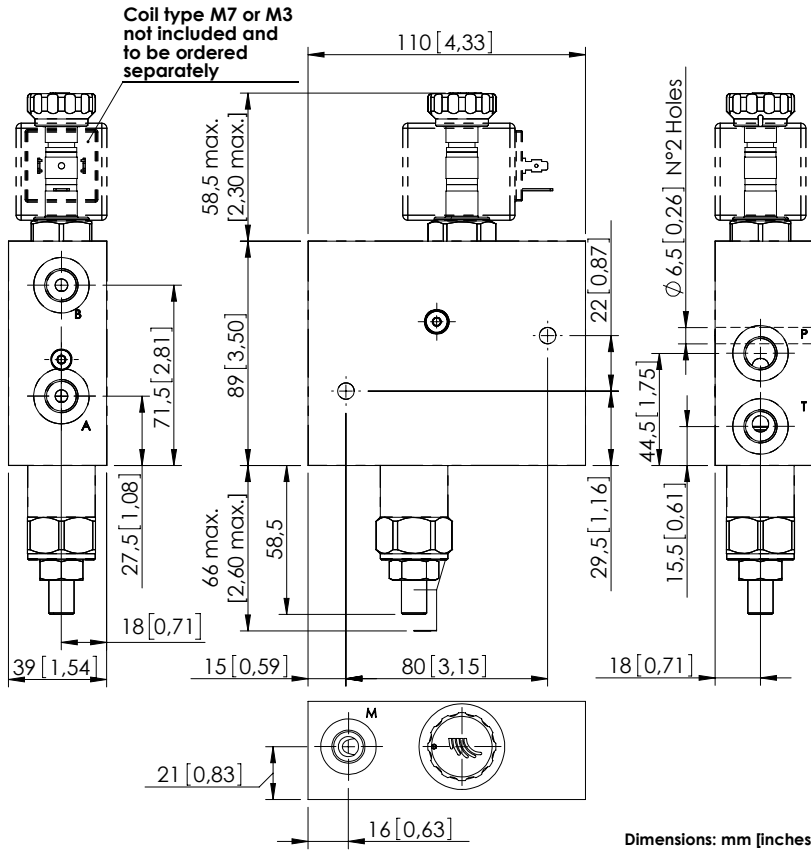


BDEF-010-ALRV

AUXILIARY QUICK HITCH



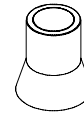
SPECIFICATIONS

Max. operating pressure:	380 bar (5500 psi)
Rated flow:	10 l/min (3 gpm)
Manifold:	Steel
Weight:	3 kg (6,8 lbs)
Coil type:	M7 or M3 type
Contamination class to ISO 4406:	See technical spec.
MTTFa:	150 - 1200 years: See technical spec.

NOTES

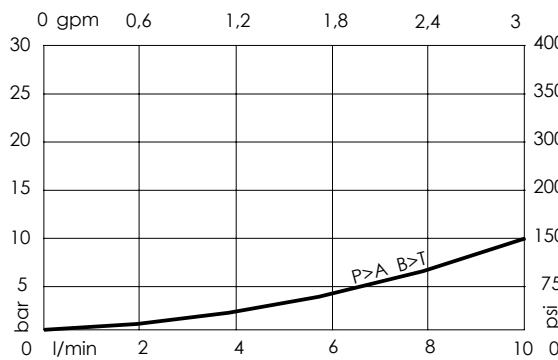
For other configurations/quick codes not available in this catalogue page please consult factory

SEALING CAP



Ordering code:
AT000022

CURVES



ORDERING CODES

Quick code	Description	Ports	Standard setting Q=5 l/min (1,3 gpm)	Adjustment range	Pressure increase
BD000095	BDEF-010-ALRV-NP-G14-V380	P,T,A,B,M: G 1/4"	340 bar (4900 psi)	70-350 bar (1000-5000 psi)	114 bar/turn (1600 psi/turn)