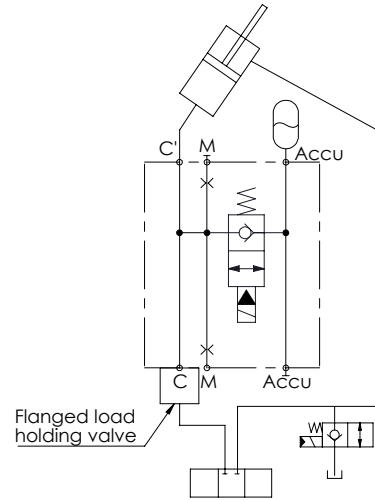
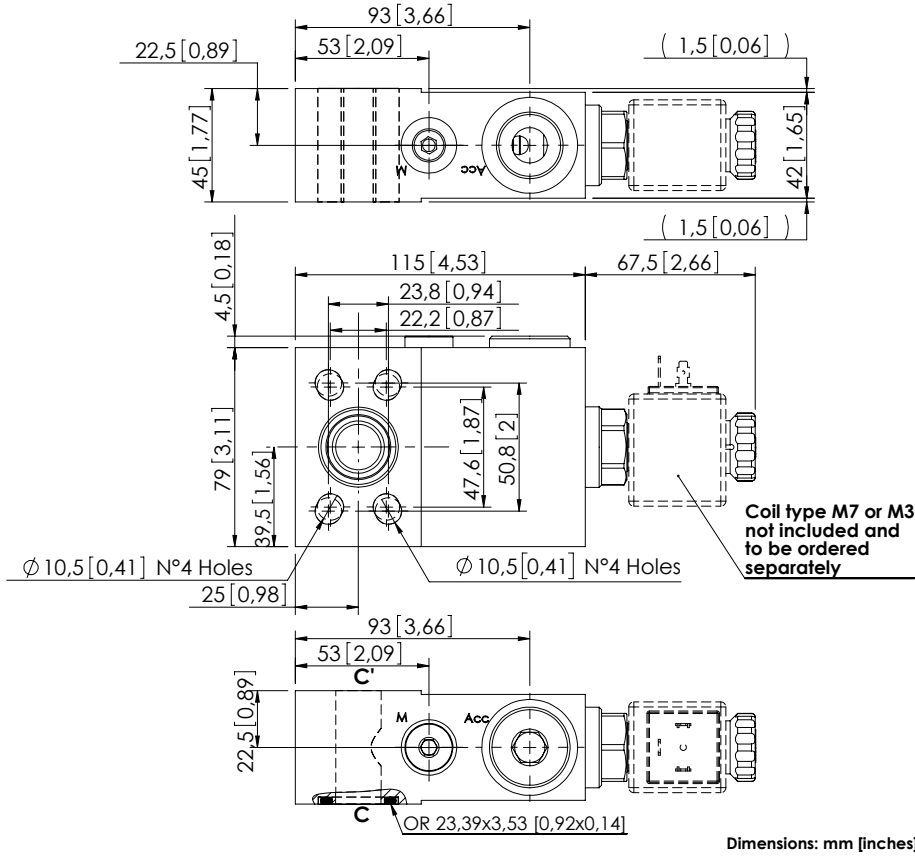


# BDEN-070-AFEJ

SOLENOID ACTIVATED  
FLANGED



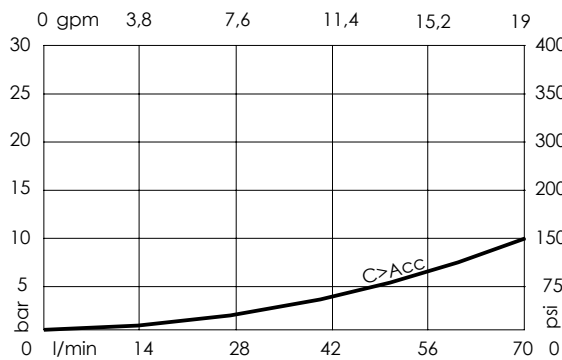
## SPECIFICATIONS

Max. operating pressure:	420 bar (6000 psi)
Rated flow:	70 l/min (19 gpm)
Weight:	2,97 kg (6,5 lbs)
Manifold:	Steel
Coil type:	M7 or M3 type
Contamination class to ISO 4406:	See technical spec.
MTTF:	150 - 1200 years: See technical spec.

## NOTES

For other configurations/quick codes not available in this catalogue page please consult factory

## CURVES



## ORDERING CODES

Quick code	Description	Ports
BD000065	BDEN-070-AFEJ-NP-S34-N350	C,C': 3/4" SAE 3000/6000 Acc: G 3/4" M: G 1/4"