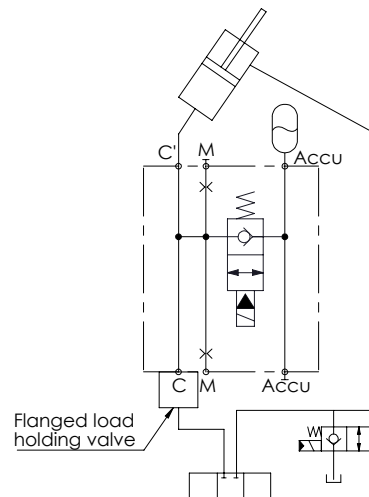
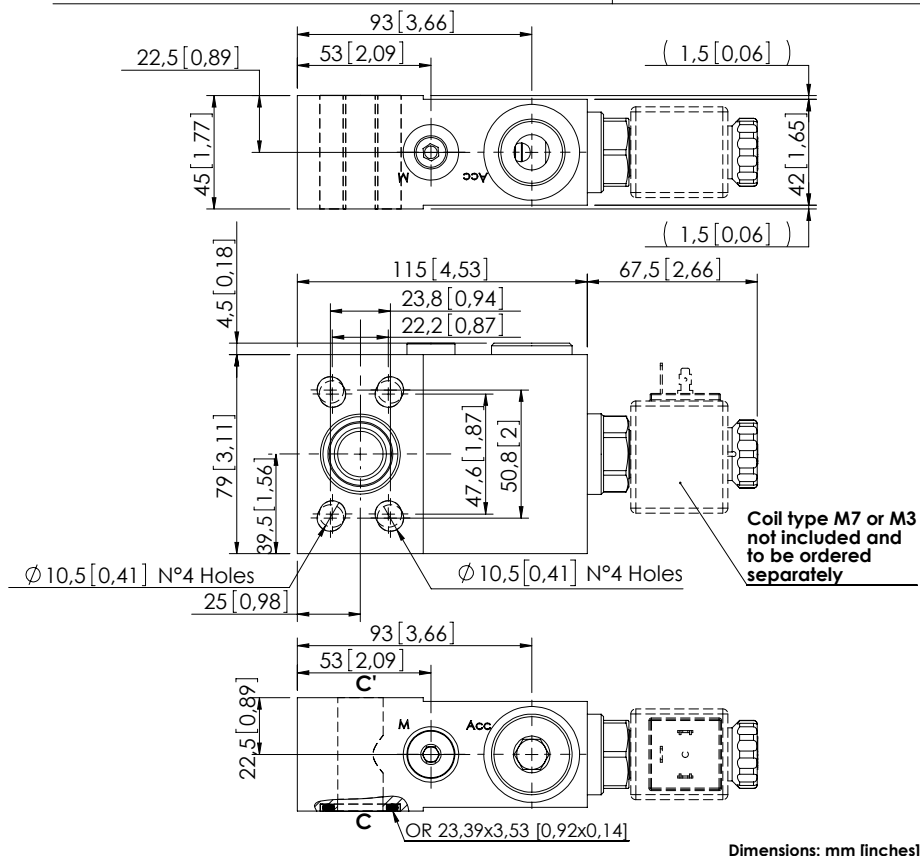
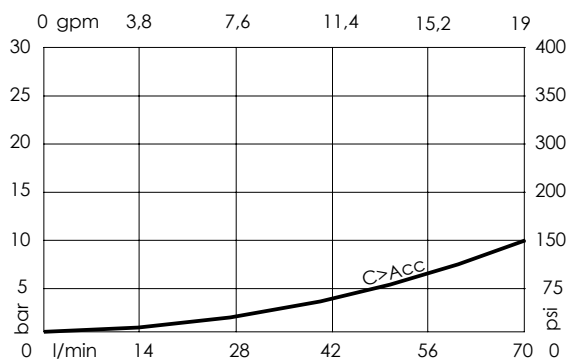


**BDEN-070-AFEJ**SOLENOID ACTIVATED  
FLANGED**SPECIFICATIONS**

Max. operating pressure:	<b>420 bar (6000 psi)</b>
Rated flow:	<b>70 l/min (19 gpm)</b>
Weight:	<b>2,97 kg (6,5 lbs)</b>
Manifold:	<b>Steel</b>
Coil type:	<b>M7 or M3 type</b>
Contamination class to ISO 4406:	<b>See technical spec.</b>
MTTF <sub>d</sub> :	<b>150 years</b>

**NOTES**

For other configurations/quick codes not available in this catalogue page please consult factory

**CURVES****ORDERING CODES**

Quick code	Description	Ports
BD000065	BDEN-070-AFEJ-NP-S34-N350	C, C': 3/4" SAE 3000/6000 Acc: G 3/4" M: G 1/4"