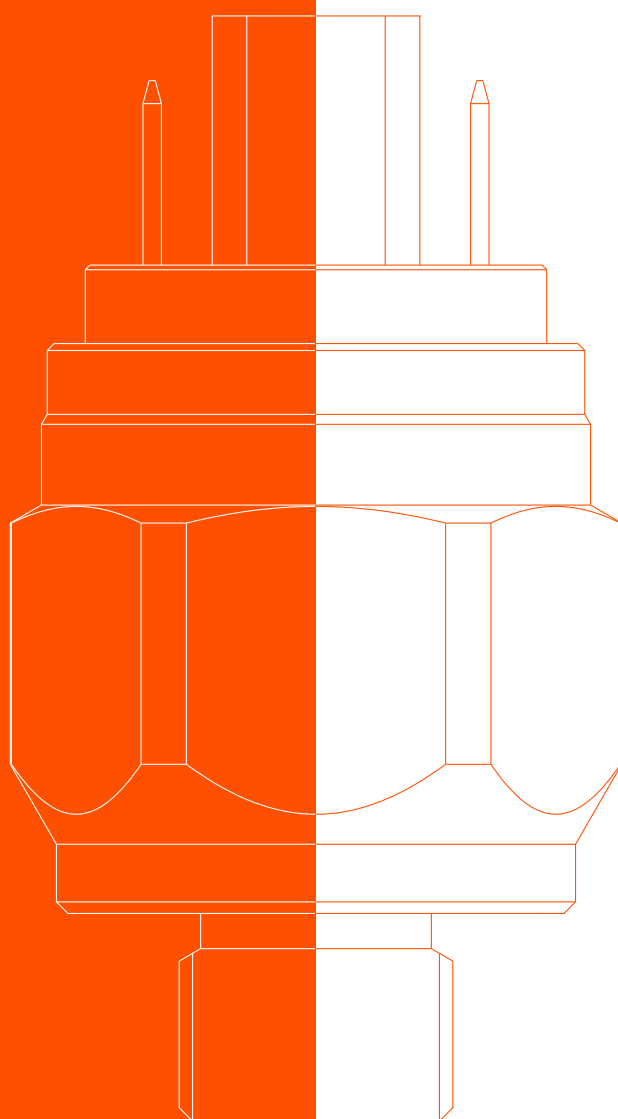


**NEW**

# Sensors

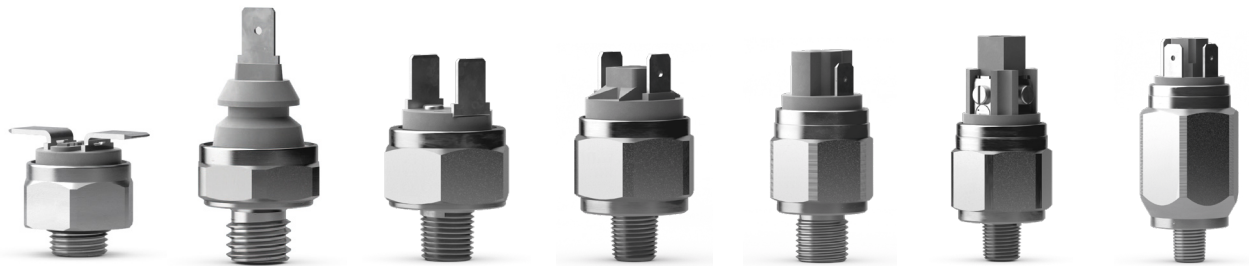


**Pressure Switches**

# Electromechanical

## PRESSURE SWITCHES

- |          |  |           |  |
|----------|--|-----------|--|
| <b>1</b> | miniaturized pressure switch SPST NO $\leq 48$ V                       | <b>6</b>  | pressure switch SPST clamps $\leq 48$ V                |
| <b>2</b> | fixed setting pressure switch SPST<br>earth return contact $\leq 48$ V | <b>7</b>  | pressure switch SPDT ground terminal $\leq 250$ V      |
| <b>3</b> | fixed setting pressure switch SPST $\leq 48$ V                         | <b>8</b>  | compact pressure switch SPDT $\leq 250$ V              |
| <b>4</b> | compact pressure switch SPST NO $\leq 48$ V                            | <b>9</b>  | pressure switch SPST integrated connector $\leq 250$ V |
| <b>5</b> | pressure switch SPST faston $\leq 48$ V                                | <b>10</b> | pressure switch SPDT DIN connector $\leq 250$ V        |
|          |  | <b>11</b> | pressure switch SPDT DIN connector $\leq 250$ V        |
|          |  | <b>12</b> | pressure switch SPDT DIN connector (cetop + G 1/4" F)  |



**1** **2** **3** **4** **5** **6** **7**



**8** **9** **10** **11** **12**

# Differential

## PRESSURE SWITCHES

- |           |  |
|-----------|--|
| <b>13</b> | electrical differential pressure indicator magnetic drive - SPST |
| <b>14</b> | electrical differential pressure indicator magnetic drive - SPDT |
| <b>15</b> | optical differential pressure indicator magnetic drive           |



**13** **14** **15**