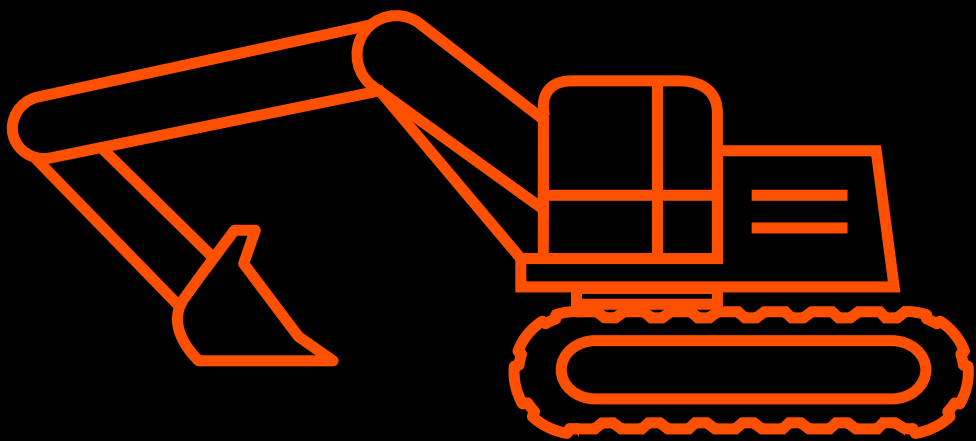


APPLICATIONS

EXCAVATOR





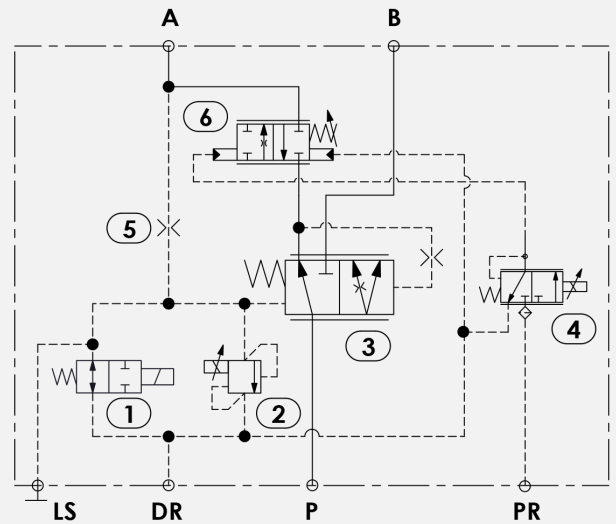
ATLANTIC

Fluid Tech

EXCAVATOR | Hammer

MAX FLOW RATE 200 [l/min] MAX PRESSURE 350 [bar]

- ✓ **3-way** for SINGLE PUMP system
- ✓ **up to 5-way** for DUAL PUMP system



spool in body

for priority flow control

on/off **cartridge**

for by-pass control

spool in body

for pressure compensation

proportional **cartridge**

for pressure control

...Believe in Better

ENERGY SAVING ON MACHINERY



PERFORMANCE IMPROVEMENT



■ **Atlantic Fluid Tech product performance**

■ **market average conventional performance**



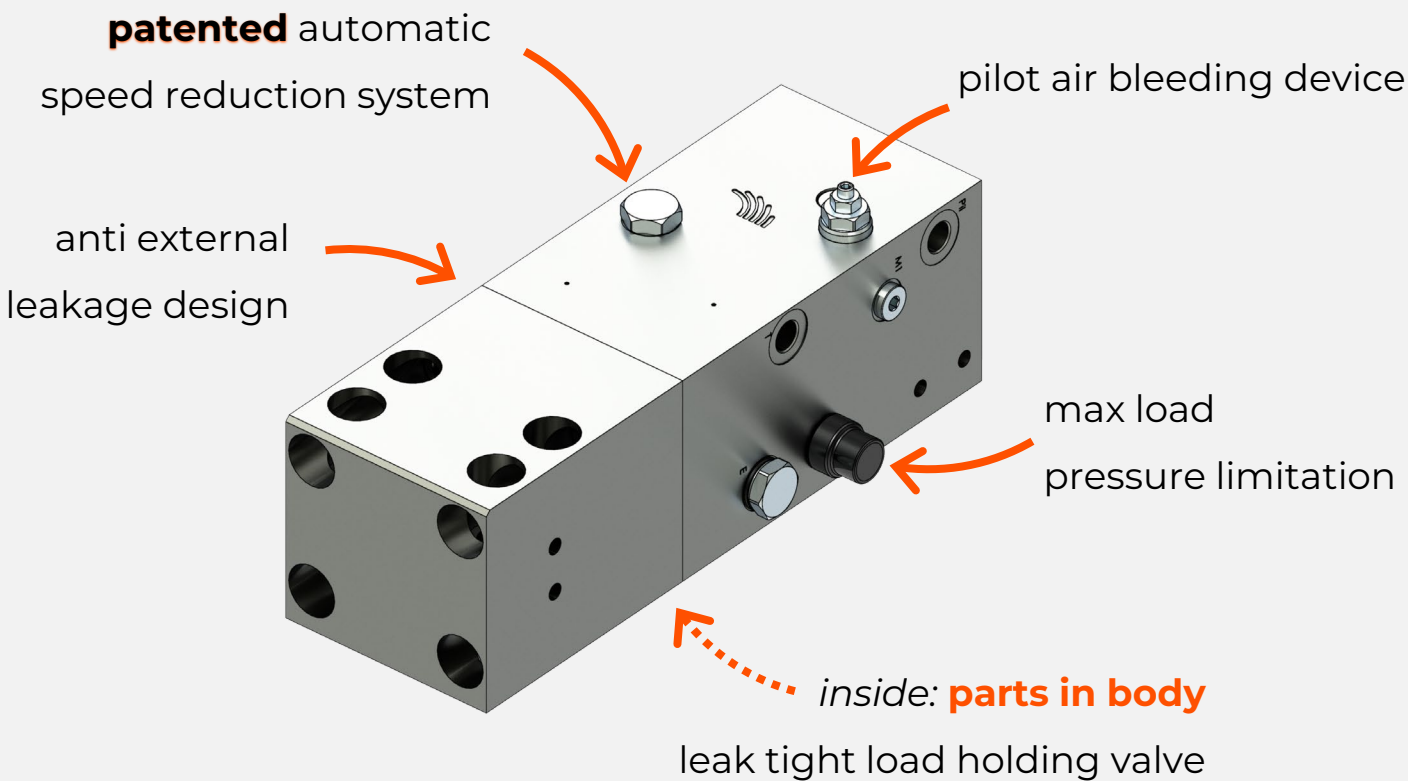
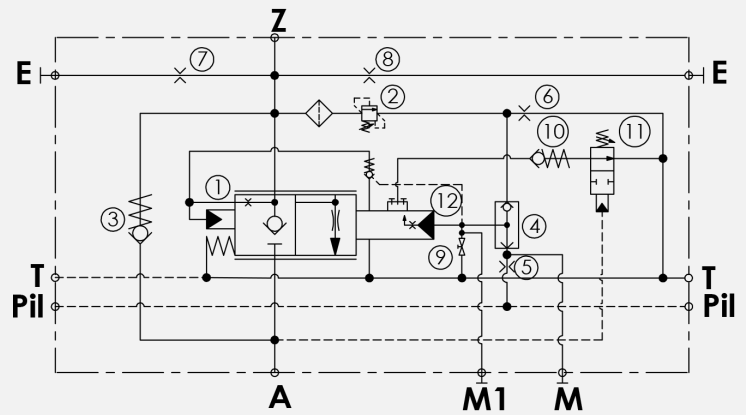
ATLANTIC

Fluid Tech

EXCAVATOR

MAX FLOW RATE 500 [l/min] MAX PRESSURE 420 [bar]

- ✓ **patented**
- ✓ **high flow / low Δp**
- ✓ **compact design**
- ✓ **no need for tuning**
to comply with hose break test



...Believe in Better

ENERGY SAVING ON MACHINERY



PERFORMANCE IMPROVEMENT



■ Atlantic Fluid Tech product performance

■ market average conventional performance



ATLANTIC

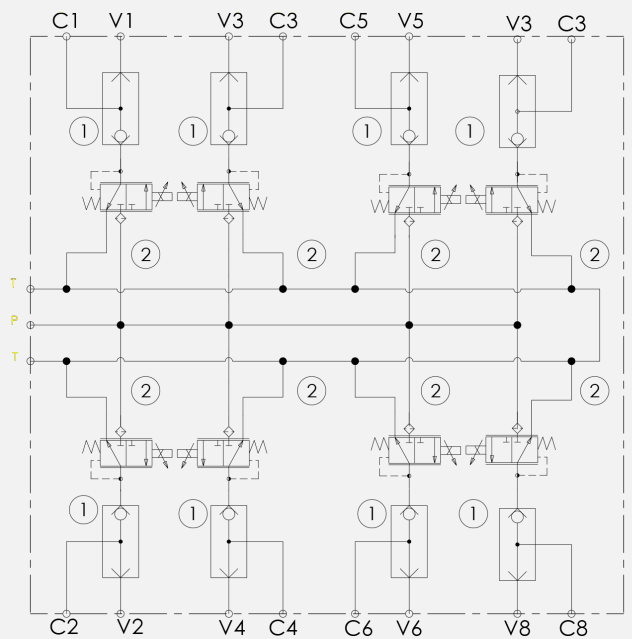
Fluid Tech

EXCAVATOR

MAX FLOW RATE 5 [l/min]

MAX PRESSURE 50 [bar]

- ✓ **available in multiple configurations** (2, 4, 6, 8... sections)
- ✓ **reliable construction**
- ✓ **dual source pilot lines**
from joysticks
from proportional control
- ✓ **100% hydraulically tested**



proportional pressure
reducing **cartridges**



pilot lines
control block

shuttle valve **cartridges**
for pilot dual source

...Believe in Better

ENERGY SAVING ON MACHINERY



PERFORMANCE IMPROVEMENT



Atlantic Fluid Tech product performance

market average conventional performance