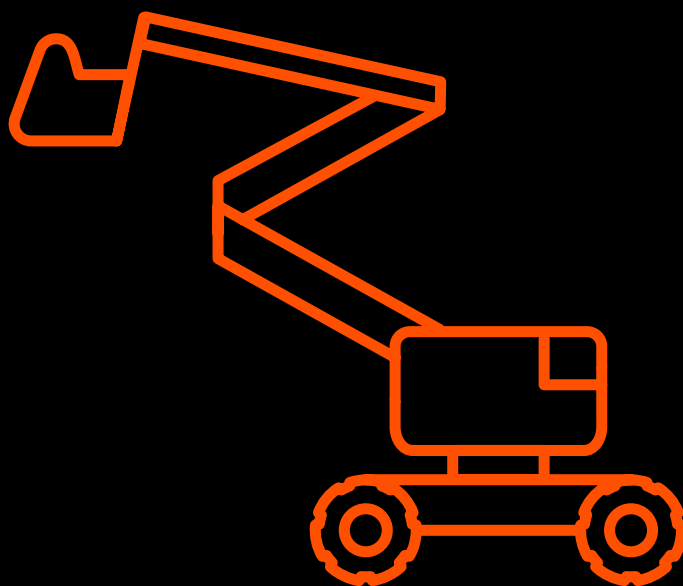


# APPLICATIONS

---

## AERIAL PLATFORM





# ATLANTIC

## Fluid Tech

### AERIAL PLATFORM

**MAX FLOW RATE 35 [l/min]**

**MAX PRESSURE 250 [bar]**

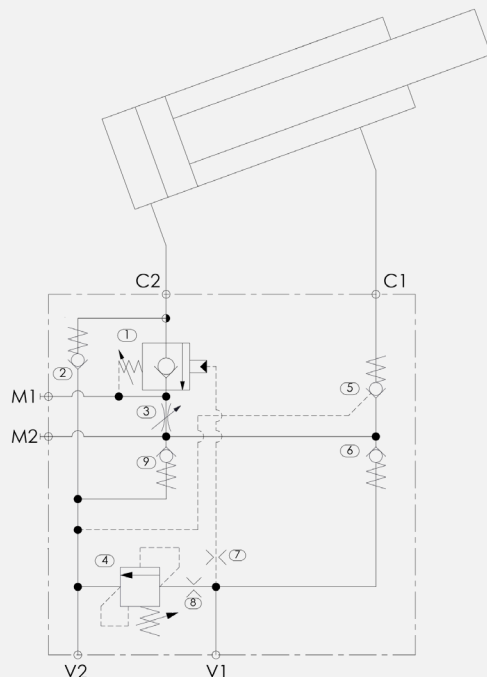
✓ **patented**

✓ **same performances with:**

**up to 30%**  
**reduction of fuel consumption**



**up to 30%**  
**increased battery life**



**cartridge**

pilot pressure control

**gravity lowering valve**

limitation of  
maximum speed

**parts in body**

lowering speed control

*...Believe in Better*

**ENERGY SAVING ON MACHINERY**



**PERFORMANCE IMPROVEMENT**



■ **Atlantic Fluid Tech product performance**

■ **market average conventional performance**



# ATLANTIC

## Fluid Tech

### AERIAL PLATFORM

**MAX FLOW RATE 25 [l/min]**

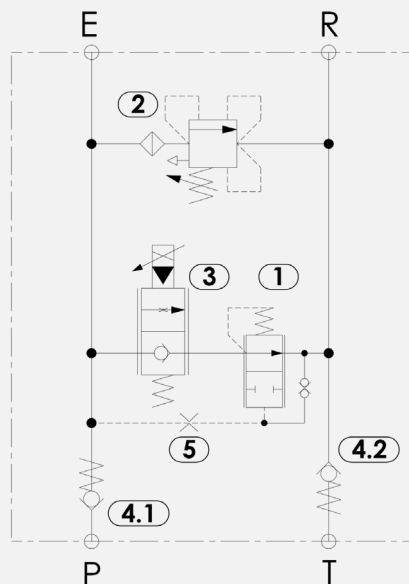
**MAX PRESSURE 250 [bar]**

✓ **same performances with:**

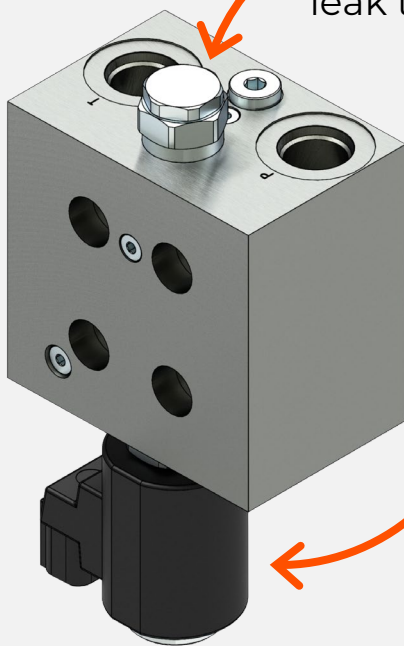
**up to 30%**  
reduction of fuel consumption



**up to 30%**  
increased battery life



proportional  
gravity lowering valve



parts in body

leak tight pressure compensator

cartridge

proportional  
lowering speed control

*...Believe in Better*

**ENERGY SAVING ON MACHINERY**



**PERFORMANCE IMPROVEMENT**



Atlantic Fluid Tech product performance

market average conventional performance



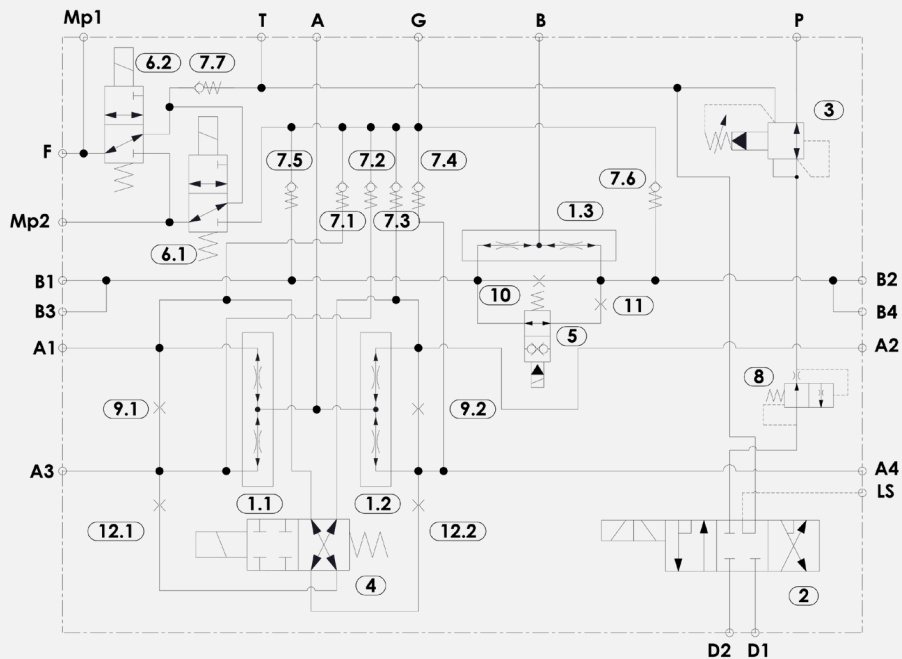
# ATLANTIC

## Fluid Tech

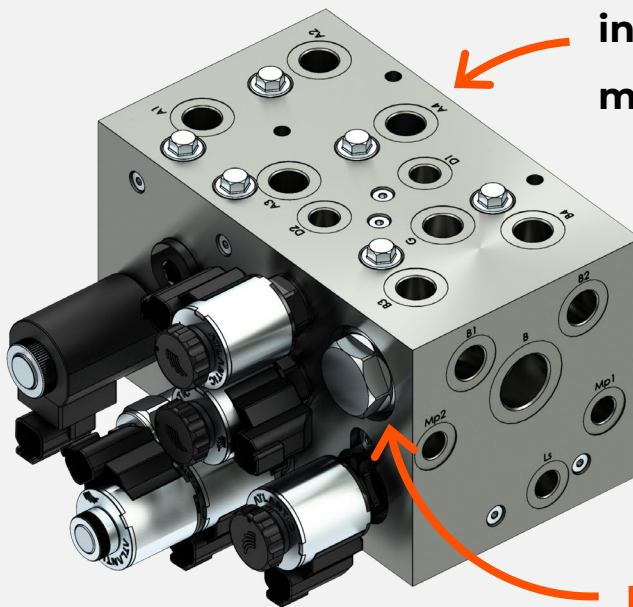
### AERIAL PLATFORM | Traction control

**MAX FLOW RATE 60 [l/min]**

**MAX PRESSURE 350 [bar]**



cartridges



integrated  
multifunctional manifold

parts in body

*...Believe in Better*

**ENERGY SAVING ON MACHINERY**



**PERFORMANCE IMPROVEMENT**



Atlantic Fluid Tech product performance

market average conventional performance