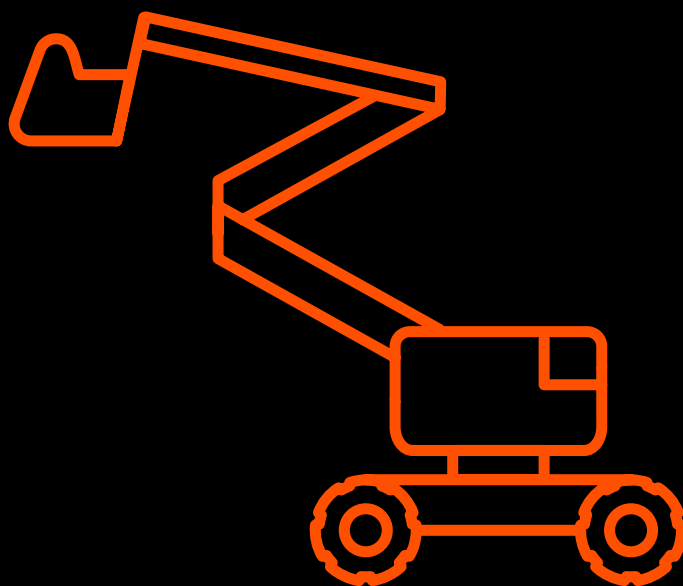


APPLICATIONS

AERIAL PLATFORM





ATLANTIC

Fluid Tech

AERIAL PLATFORM

MAX FLOW RATE 35 [l/min]

MAX PRESSURE 250 [bar]

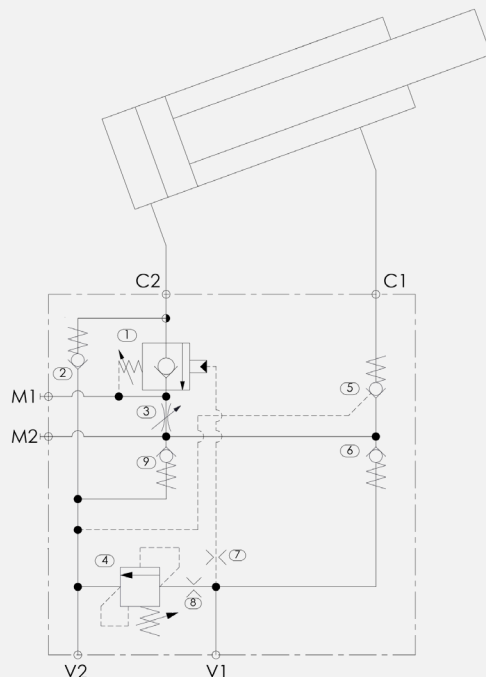
✓ **patented**

✓ **same performances with:**

up to 30%
reduction of fuel consumption



up to 30%
increased battery life



cartridge

pilot pressure control

gravity lowering valve

limitation of
maximum speed

parts in body

lowering speed control

...Believe in Better

ENERGY SAVING ON MACHINERY



PERFORMANCE IMPROVEMENT



■ **Atlantic Fluid Tech product performance**

■ **market average conventional performance**



ATLANTIC

Fluid Tech

AERIAL PLATFORM

MAX FLOW RATE 25 [l/min]

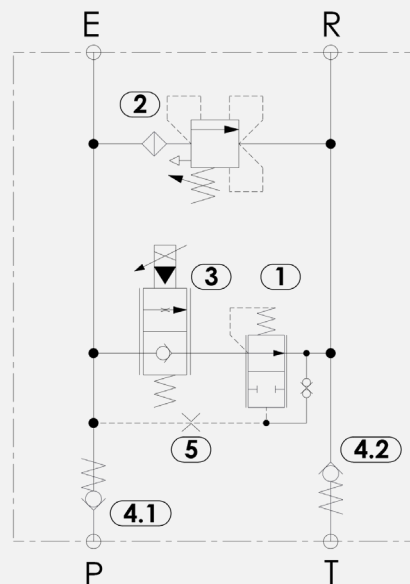
MAX PRESSURE 250 [bar]

✓ **same performances with:**

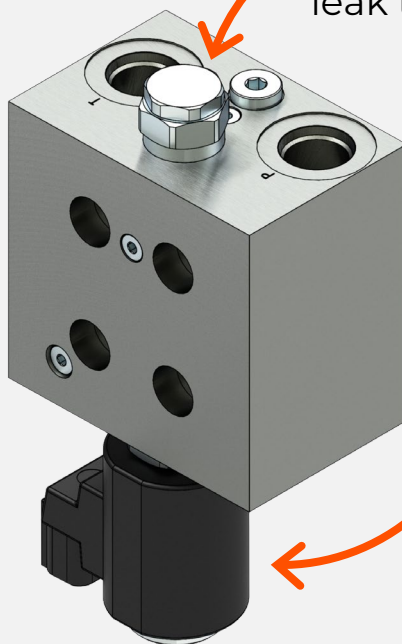
up to 30%
reduction of fuel consumption



up to 30%
increased battery life



proportional
gravity lowering valve



parts in body

leak tight pressure compensator

cartridge

proportional
lowering speed control

...Believe in Better

ENERGY SAVING ON MACHINERY



PERFORMANCE IMPROVEMENT



Atlantic Fluid Tech product performance

market average conventional performance



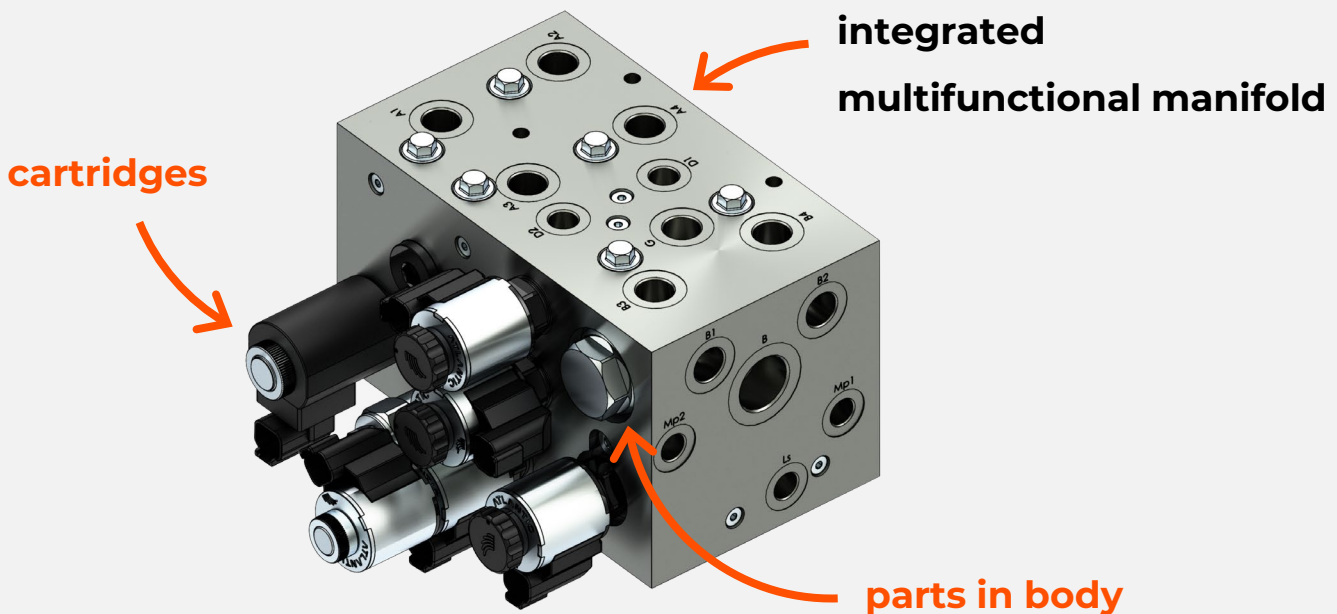
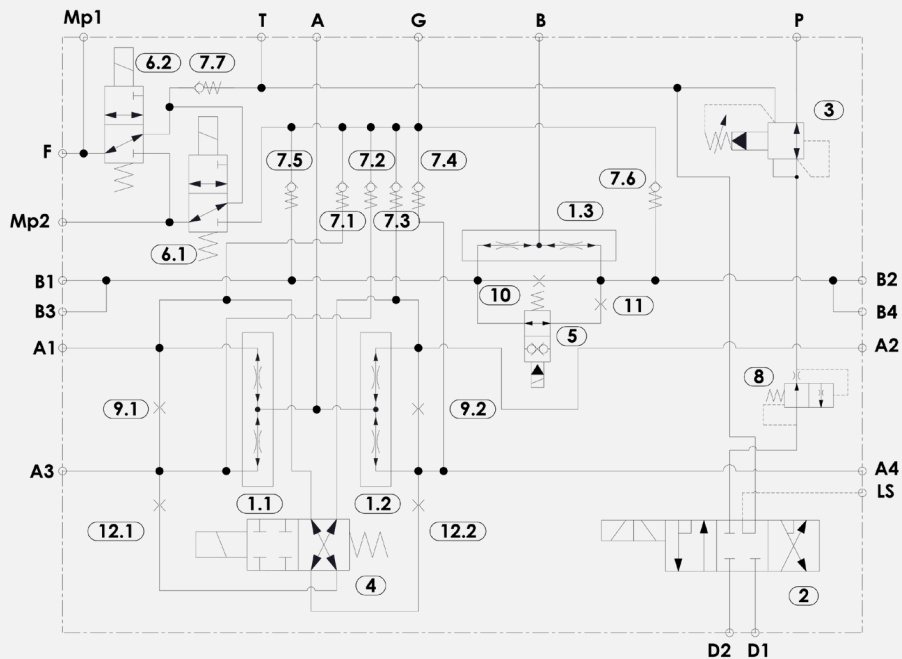
ATLANTIC

Fluid Tech

AERIAL PLATFORM | Traction control

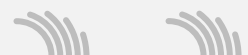
MAX FLOW RATE 60 [l/min]

MAX PRESSURE 350 [bar]

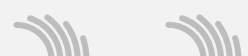


...Believe in Better

ENERGY SAVING ON MACHINERY



PERFORMANCE IMPROVEMENT



Atlantic Fluid Tech product performance

market average conventional performance

APPLICATIONS

TELESCOPIC CRANE





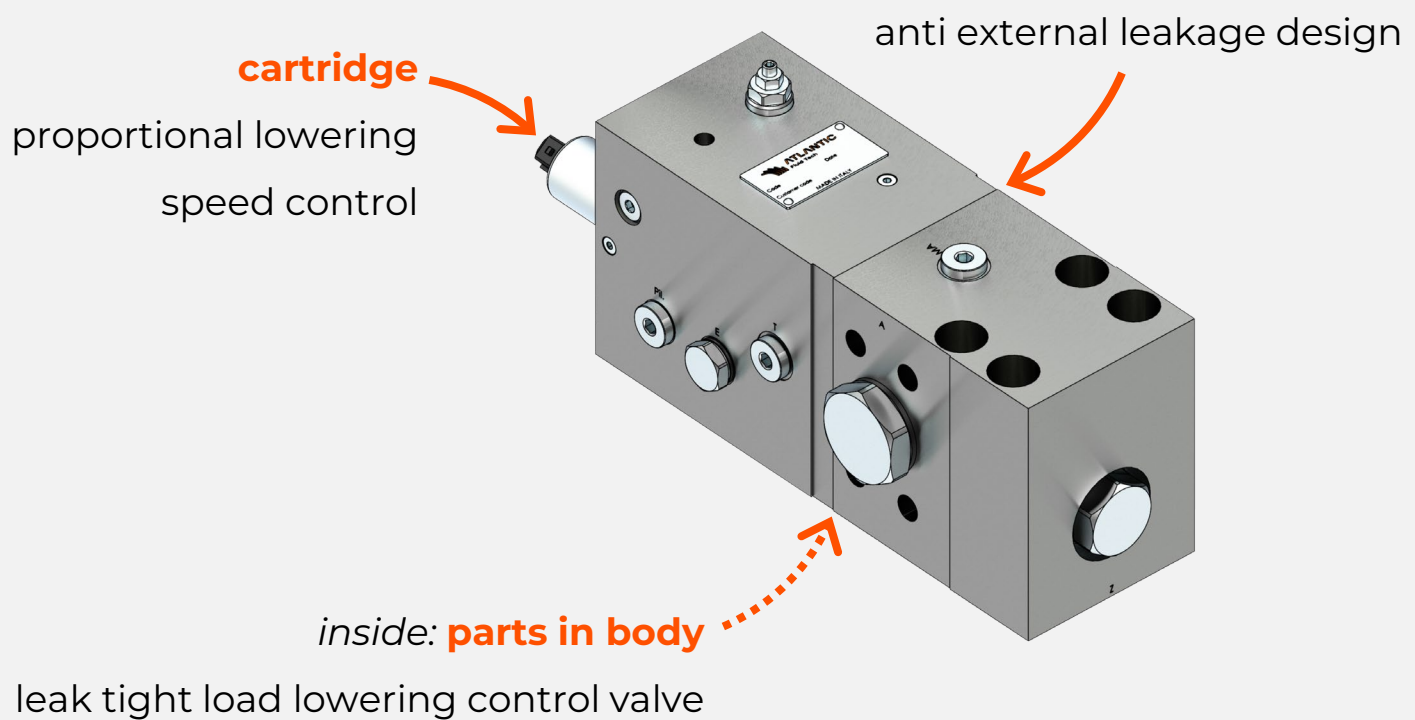
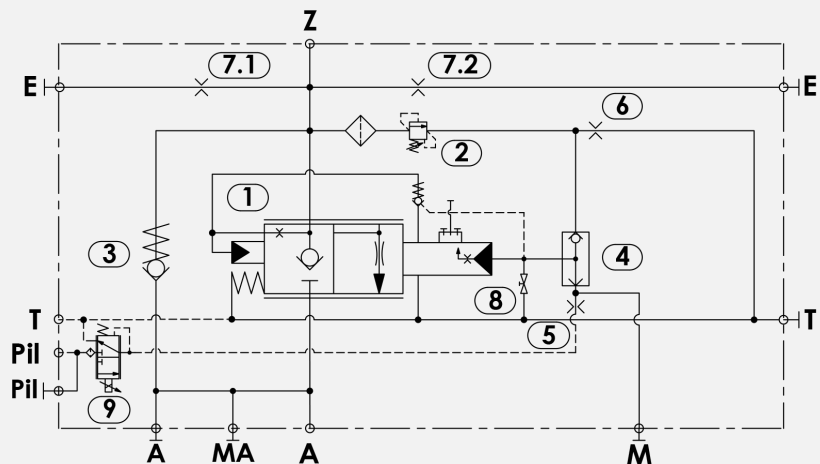
ATLANTIC

Fluid Tech

TELESCOPIC CRANE

MAX FLOW RATE 600 [l/min] MAX PRESSURE 420 [bar]

- ✓ **patented**
- ✓ **high pressure**
- ✓ **high flow rate**
- ✓ **high oil temperature resistance**



...Believe in Better

ENERGY SAVING ON MACHINERY



PERFORMANCE IMPROVEMENT





ATLANTIC

Fluid Tech

TELESCOPIC CRANE | Winch

MAX FLOW RATE 300 [l/min]

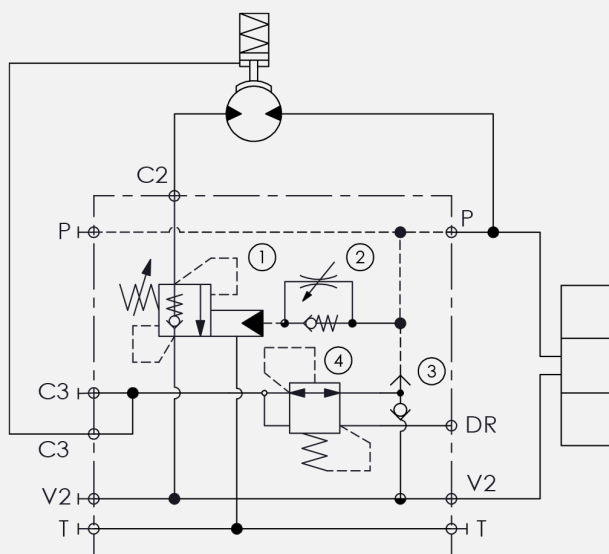
MAX PRESSURE 350 [bar]

✓ **patented**

✓ **fast response time**

parts in body

counterbalance valve



reduced pressure
for breake release

dampening device
for smooth opening

MADD
Mechanical Anti-Delay Device

...Believe in Better

ENERGY SAVING ON MACHINERY



PERFORMANCE IMPROVEMENT

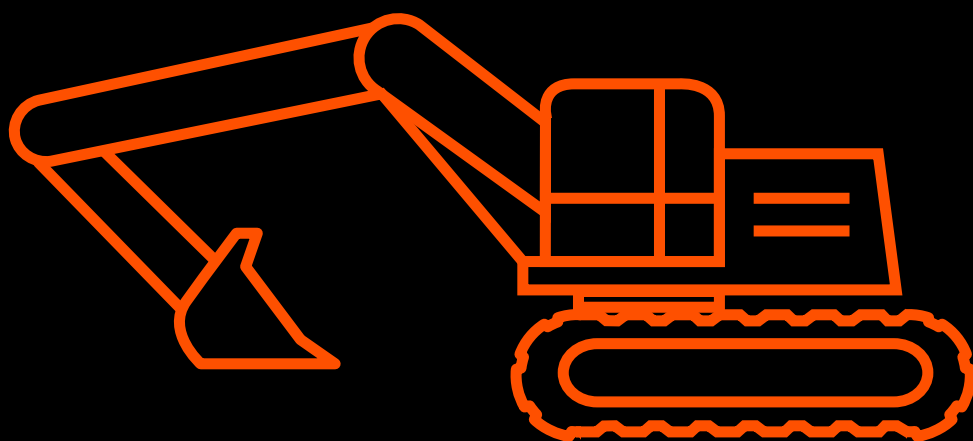


Atlantic Fluid Tech product performance

market average conventional performance

APPLICATIONS

EXCAVATOR





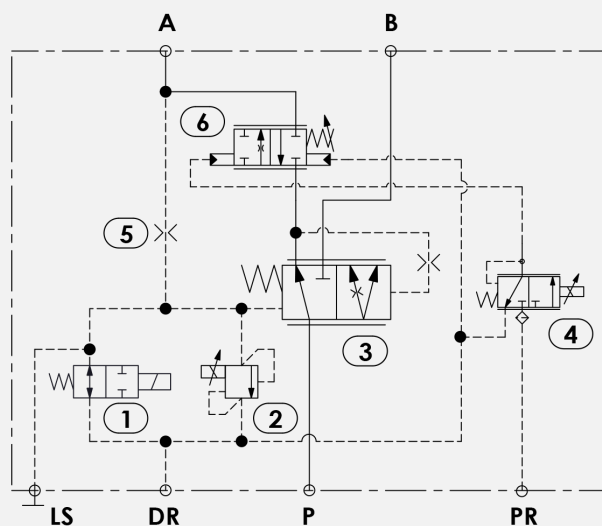
ATLANTIC

Fluid Tech

EXCAVATOR | Hammer

MAX FLOW RATE 200 [l/min] MAX PRESSURE 350 [bar]

- ✓ **3-way** for SINGLE PUMP system
- ✓ **up to 5-way** for DUAL PUMP system



spool in body

for priority flow control

on/off **cartridge**

for by-pass control

spool in body

for pressure compensation

proportional **cartridge**

for pressure control

...Believe in Better

ENERGY SAVING ON MACHINERY



PERFORMANCE IMPROVEMENT



■ Atlantic Fluid Tech product performance

■ market average conventional performance



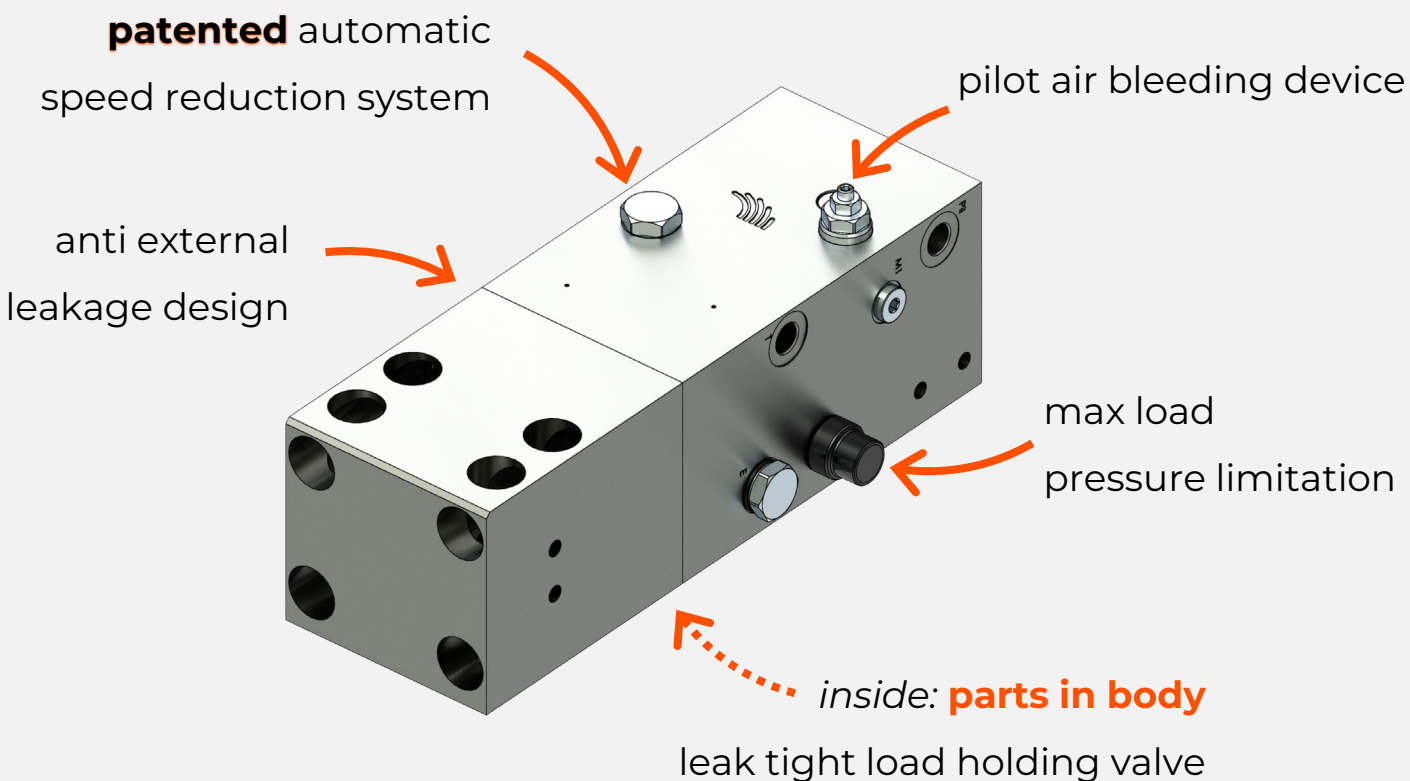
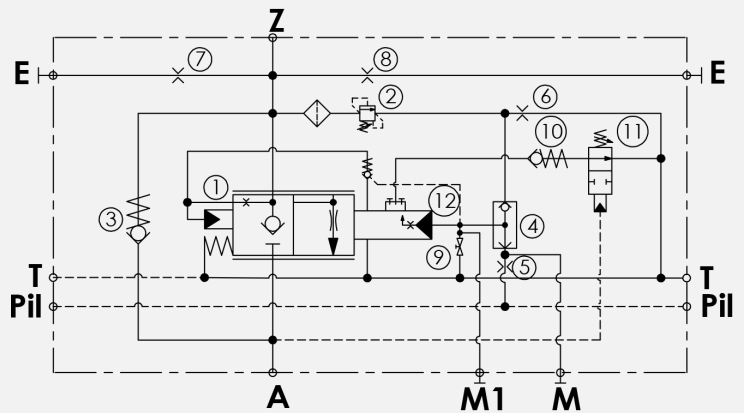
ATLANTIC

Fluid Tech

EXCAVATOR

MAX FLOW RATE 500 [l/min] MAX PRESSURE 420 [bar]

- ✓ **patented**
- ✓ **high flow / low Δp**
- ✓ **compact design**
- ✓ **no need for tuning**
to comply with hose break test



...Believe in Better

ENERGY SAVING ON MACHINERY



PERFORMANCE IMPROVEMENT



■ Atlantic Fluid Tech product performance

■ market average conventional performance



ATLANTIC

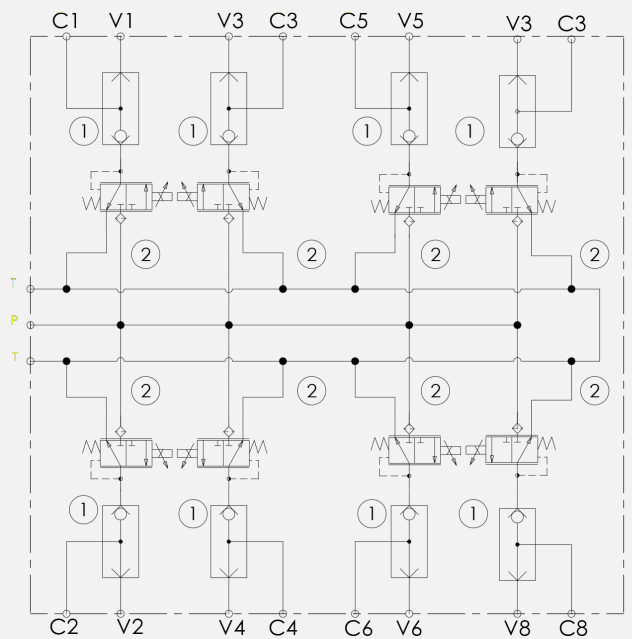
Fluid Tech

EXCAVATOR

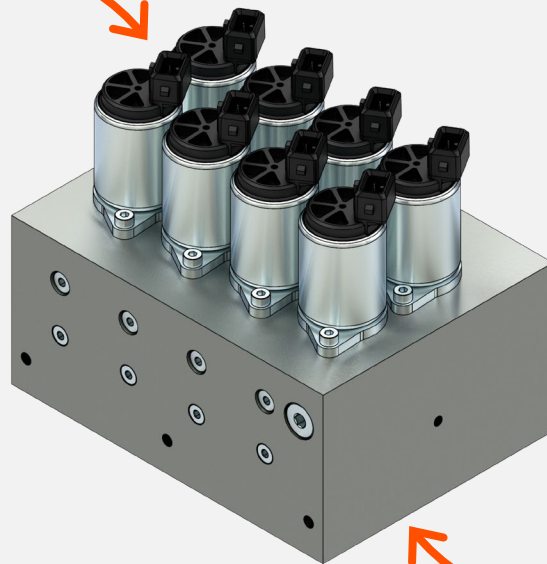
MAX FLOW RATE 5 [l/min]

MAX PRESSURE 50 [bar]

- ✓ **available in multiple configurations** (2, 4, 6, 8... sections)
- ✓ **reliable construction**
- ✓ **dual source pilot lines**
from joysticks
from proportional control
- ✓ **100% hydraulically tested**



proportional pressure
reducing **cartridges**



pilot lines
control block

shuttle valve **cartridges**
for pilot dual source

...Believe in Better

ENERGY SAVING ON MACHINERY



PERFORMANCE IMPROVEMENT

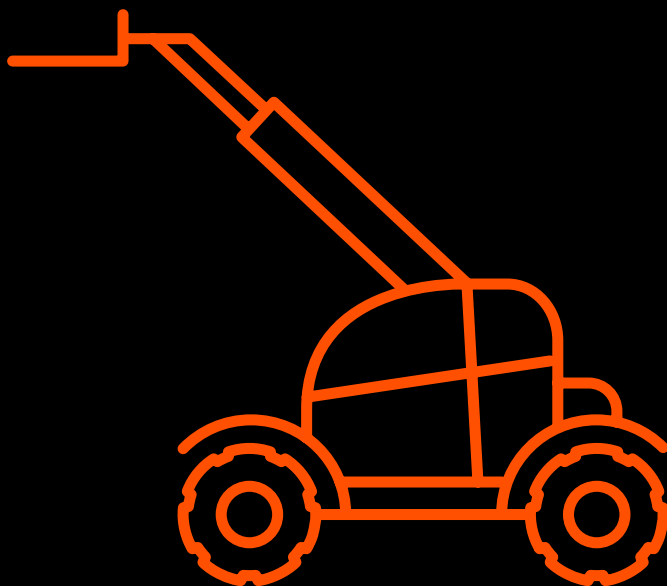


Atlantic Fluid Tech product performance

market average conventional performance

APPLICATIONS

TELEHANDLER





ATLANTIC

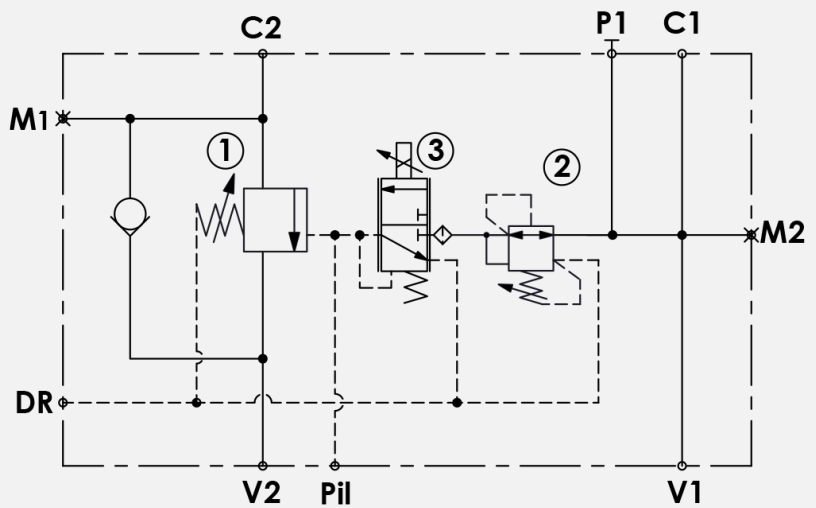
Fluid Tech

TELEHANDLER | Boom lift

MAX FLOW RATE 150 [l/min]

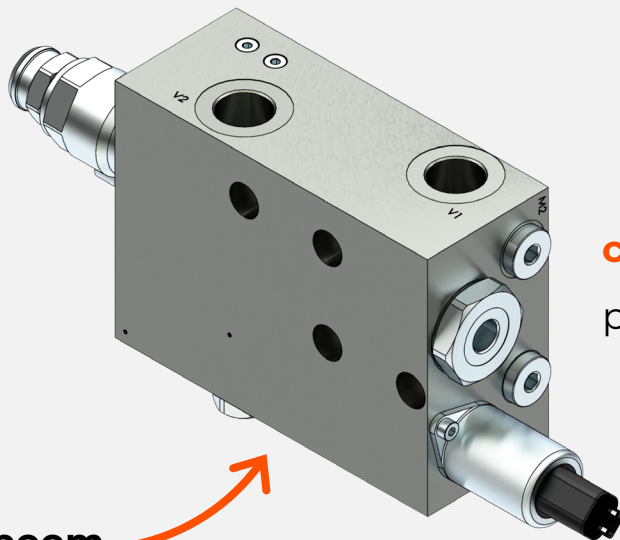
MAX PRESSURE 420 [bar]

- ✓ **high pressure**
- ✓ **energy saving**



parts in body

counterbalance valve



cartridge

proportional pilot control



proportional boom

lowering control valve



...Believe in Better

ENERGY SAVING ON MACHINERY



PERFORMANCE IMPROVEMENT



Atlantic Fluid Tech product performance

market average conventional performance



ATLANTIC

Fluid Tech

TELEHANDLER | Boom lift

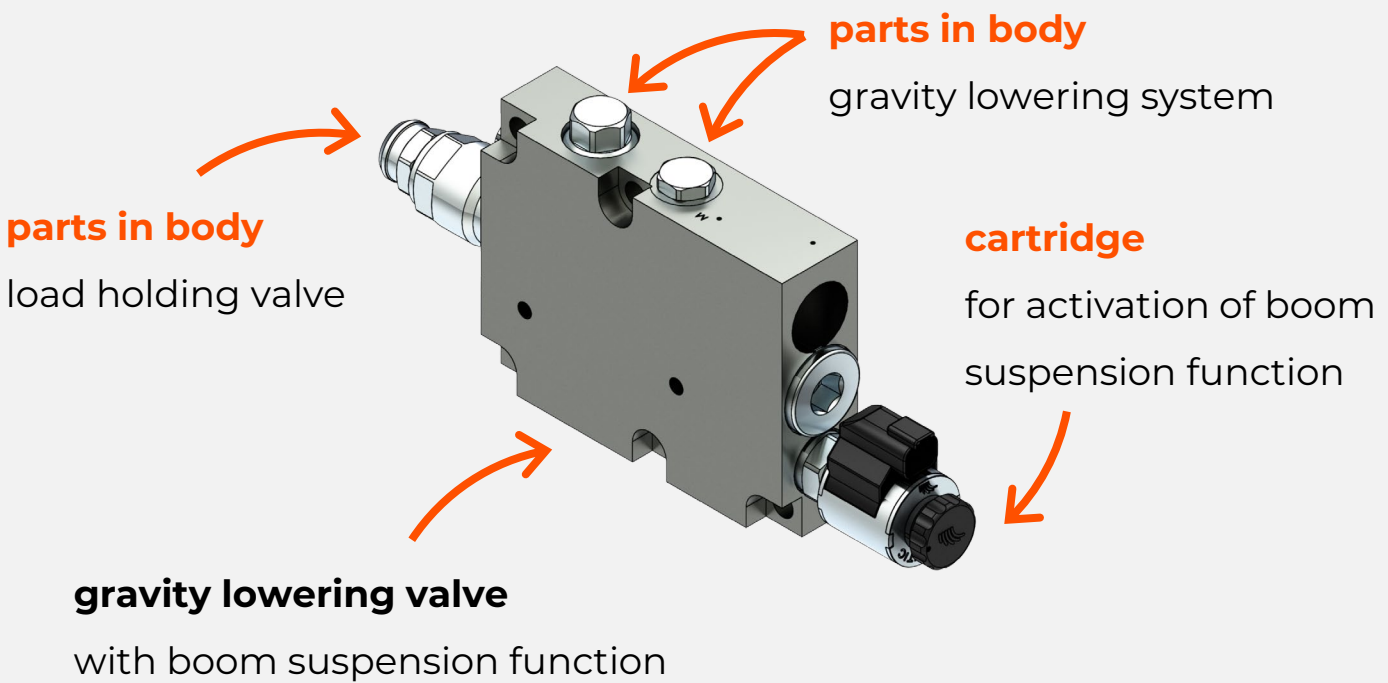
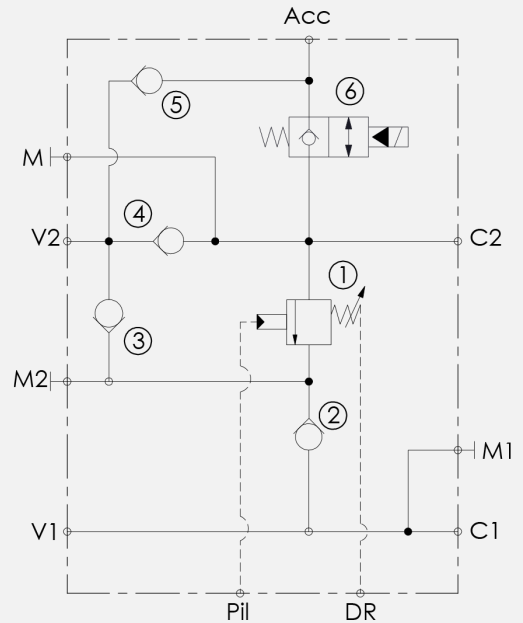
MAX FLOW RATE 150 [l/min]

MAX PRESSURE 350 [bar]

✓ **compact design**

✓ **multifunctional:**

- load holding
- gravity lowering
- boom suspension function



...Believe in Better

ENERGY SAVING ON MACHINERY



PERFORMANCE IMPROVEMENT



■ Atlantic Fluid Tech product performance

■ market average conventional performance



ATLANTIC

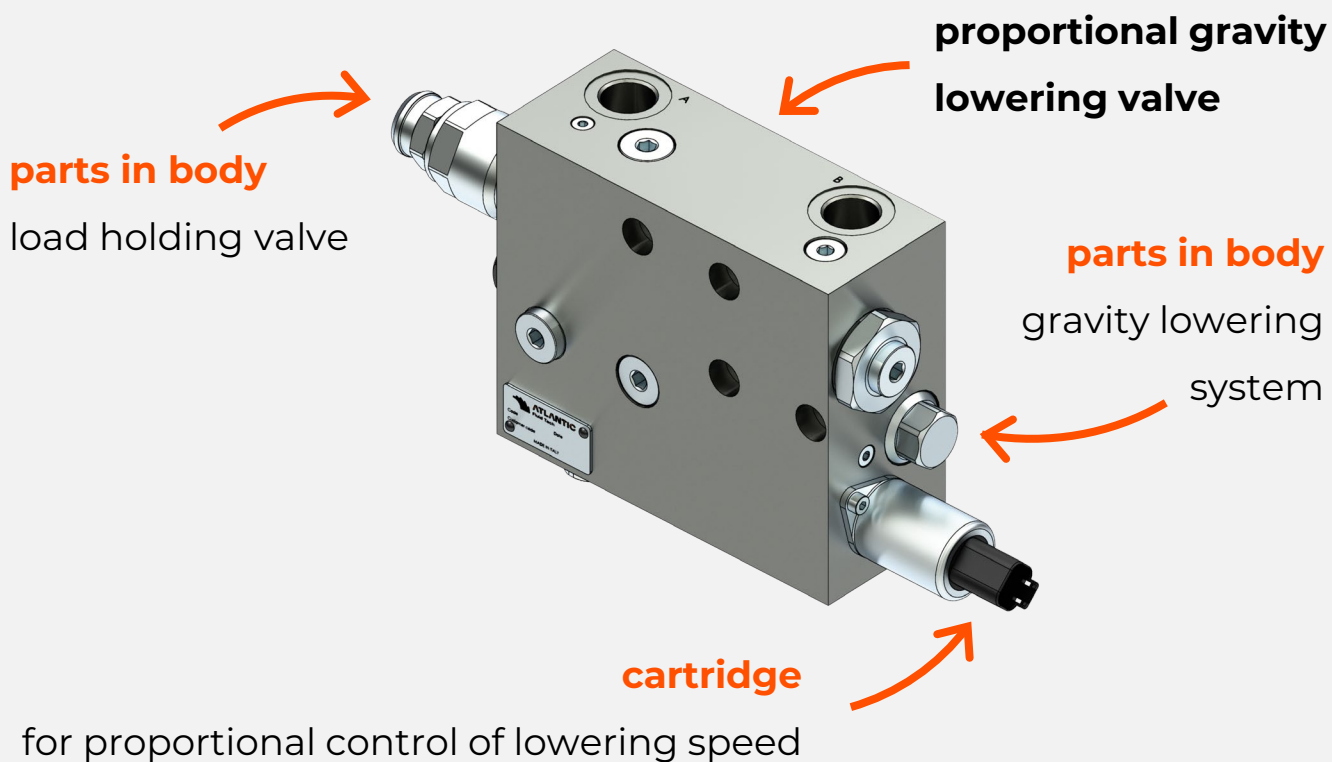
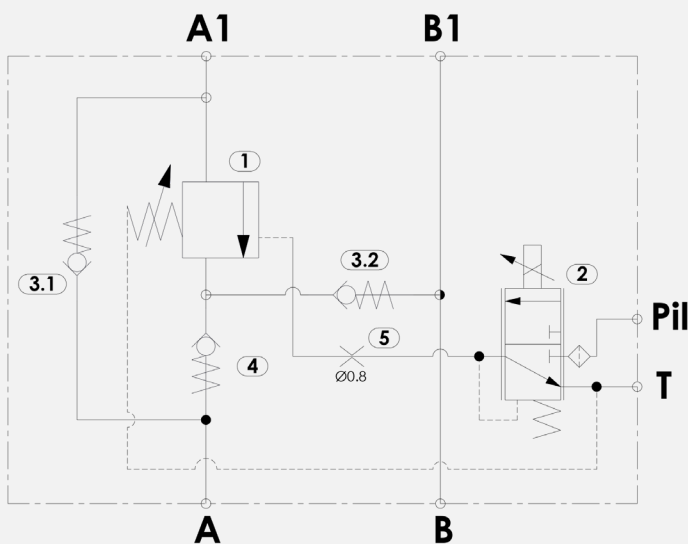
Fluid Tech

TELEHANDLER | Ride control

MAX FLOW RATE 150 [l/min]

MAX PRESSURE 420 [bar]

- ✓ **compact design**
- ✓ **proportional control**



...Believe in Better

ENERGY SAVING ON MACHINERY



PERFORMANCE IMPROVEMENT



■ **Atlantic Fluid Tech product performance**

■ **market average conventional performance**



ATLANTIC

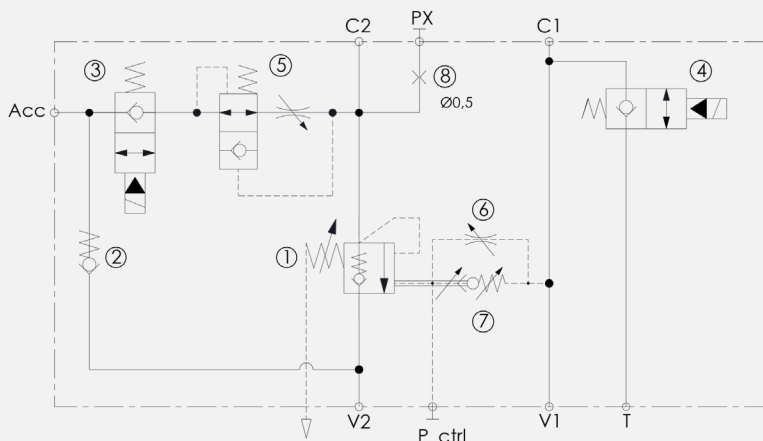
Fluid Tech

TELEHANDLER

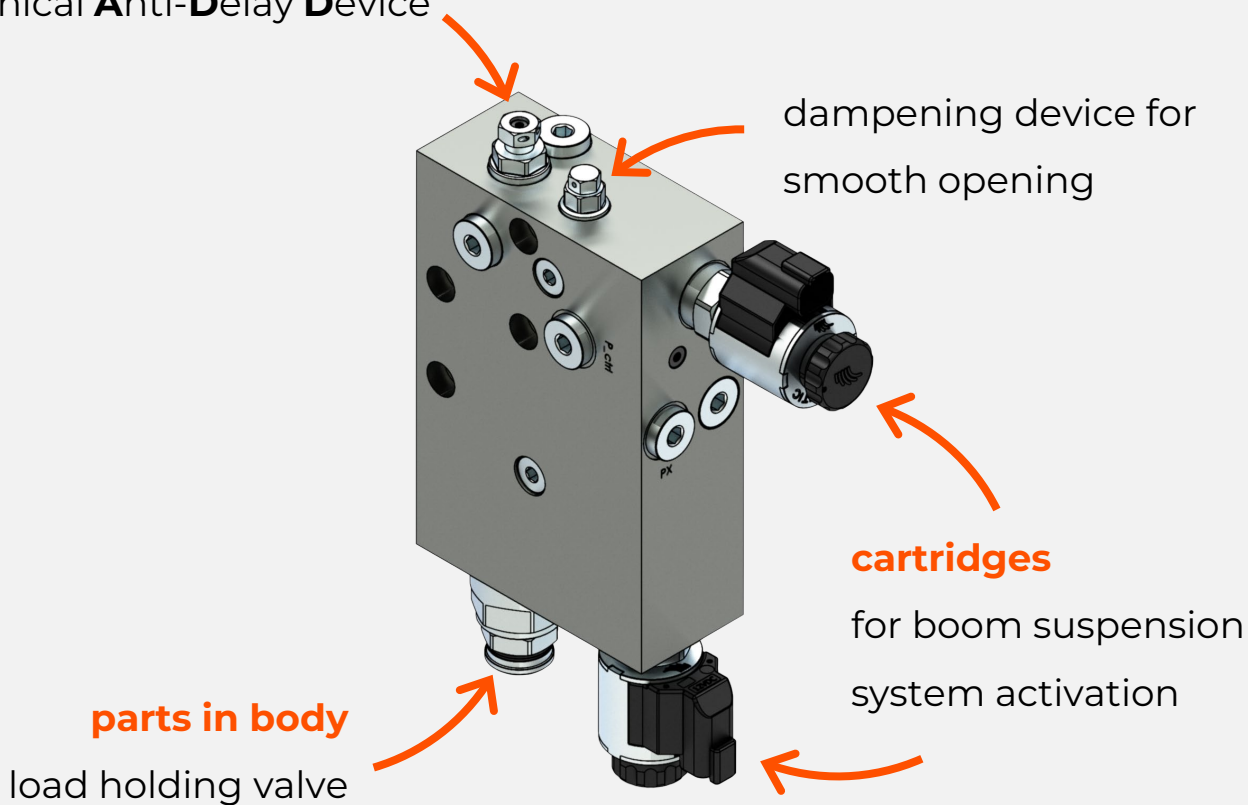
MAX FLOW RATE 160 [l/min]

MAX PRESSURE 350 [bar]

- ✓ **boom suspension system**
- ✓ **fast response time**
- ✓ **compact design**



MADD
Mechanical Anti-Delay Device



...Believe in Better

ENERGY SAVING ON MACHINERY



PERFORMANCE IMPROVEMENT

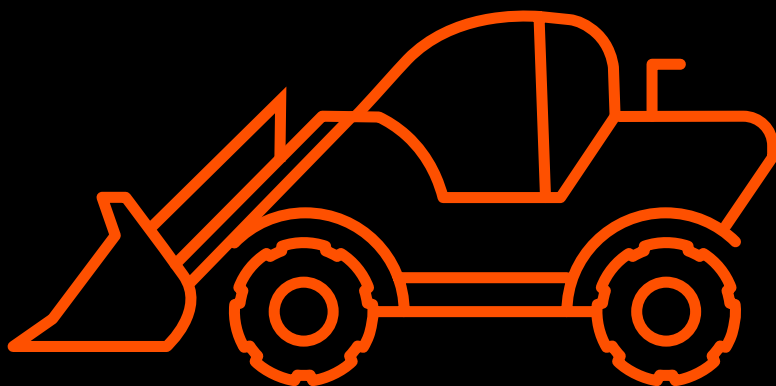


Atlantic Fluid Tech product performance

market average conventional performance

APPLICATIONS

FRONT LOADER
AND
BACK-HOE LOADER





ATLANTIC

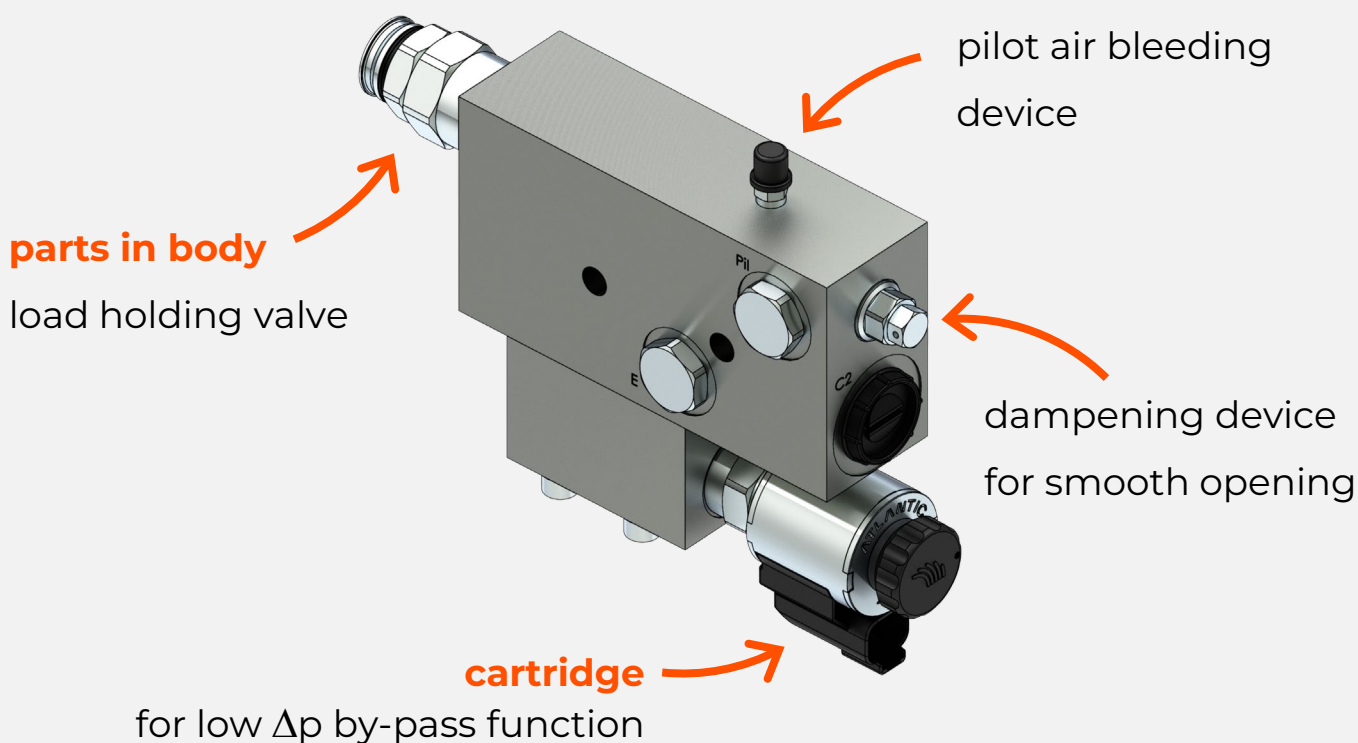
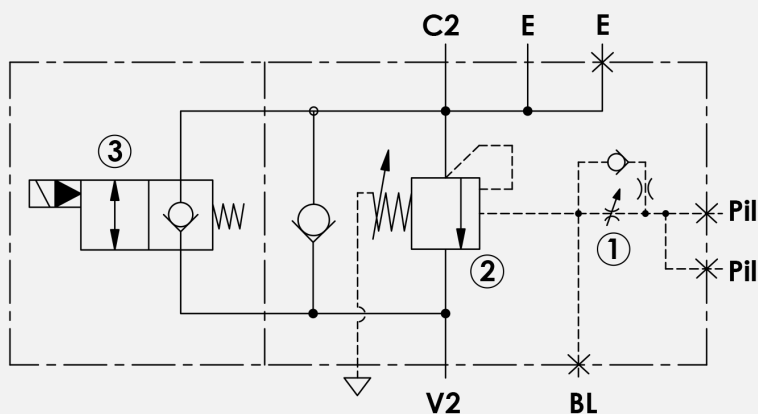
Fluid Tech

FRONT LOADER

MAX FLOW RATE 100 [l/min]

MAX PRESSURE 350 [bar]

- ✓ **electrical by-pass**
- ✓ **load holding function**
- ✓ **flexible design**



...Believe in Better

ENERGY SAVING ON MACHINERY



PERFORMANCE IMPROVEMENT



Atlantic Fluid Tech product performance

market average conventional performance



ATLANTIC

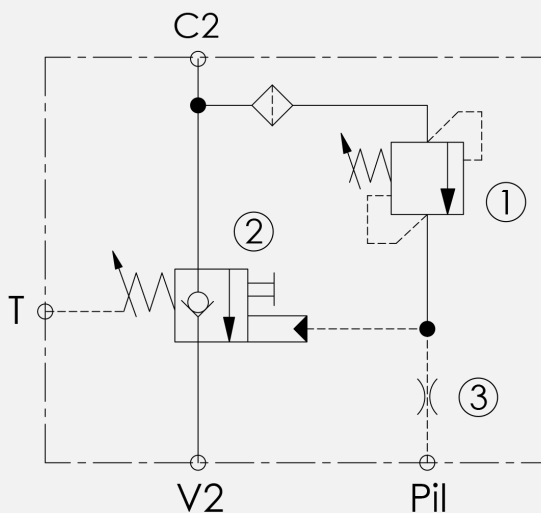
Fluid Tech

FRONT LOADER and BACK-HOE REAR EXCAVATOR

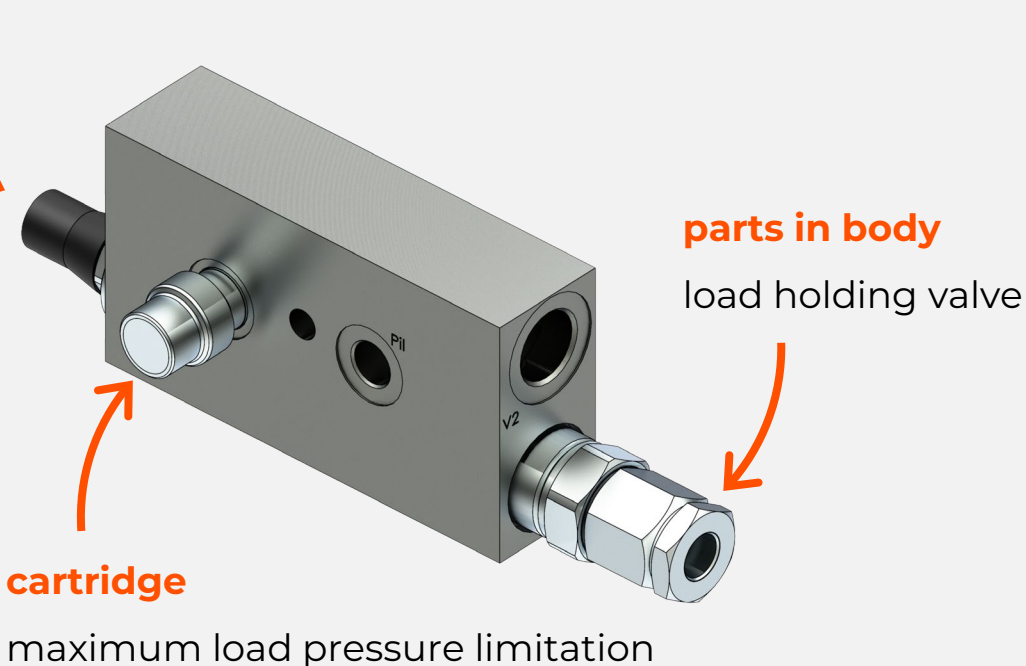
MAX FLOW RATE 100 [l/min]

MAX PRESSURE 420 [bar]

- ✓ **leak tight design**
- ✓ **low Δp**
- ✓ **high working pressure**



manual opening
for emergency operations



...Believe in Better

ENERGY SAVING ON MACHINERY



PERFORMANCE IMPROVEMENT

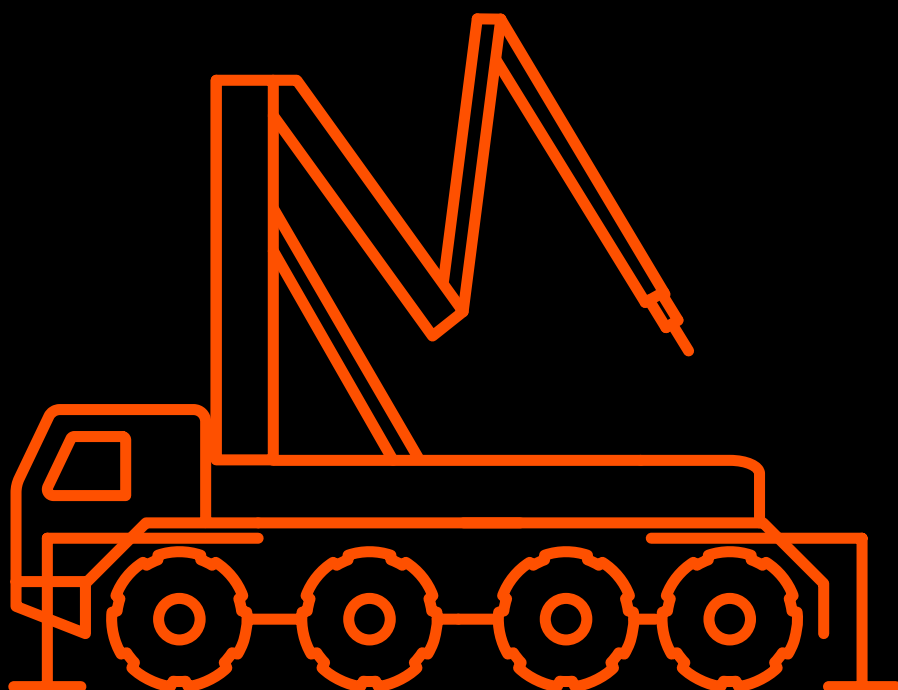


Atlantic Fluid Tech product performance

market average conventional performance

APPLICATIONS

CONCRETE PUMP CRANE





ATLANTIC

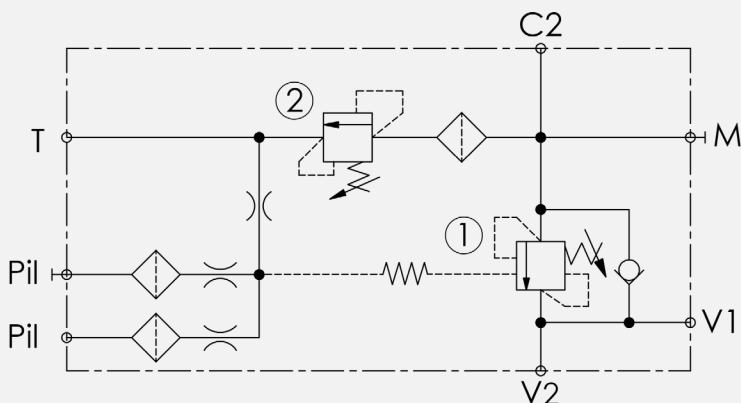
Fluid Tech

CONCRETE PUMP CRANE

MAX FLOW RATE 60 [l/min]

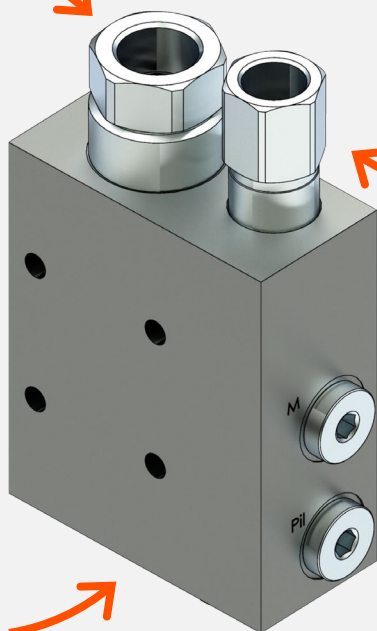
MAX PRESSURE 500 [bar]

- ✓ **high pressure**
- ✓ **improved safety**
- ✓ **reduced hysteresis**
- ✓ **reduced response time**
- ✓ **more robust design**
- ✓ **dimensional interchangeability** with competitors



parts in body

counterbalance valve



cartridge

load pressure limitation

single acting design

...Believe in Better

ENERGY SAVING ON MACHINERY



PERFORMANCE IMPROVEMENT



Atlantic Fluid Tech product performance

market average conventional performance



ATLANTIC

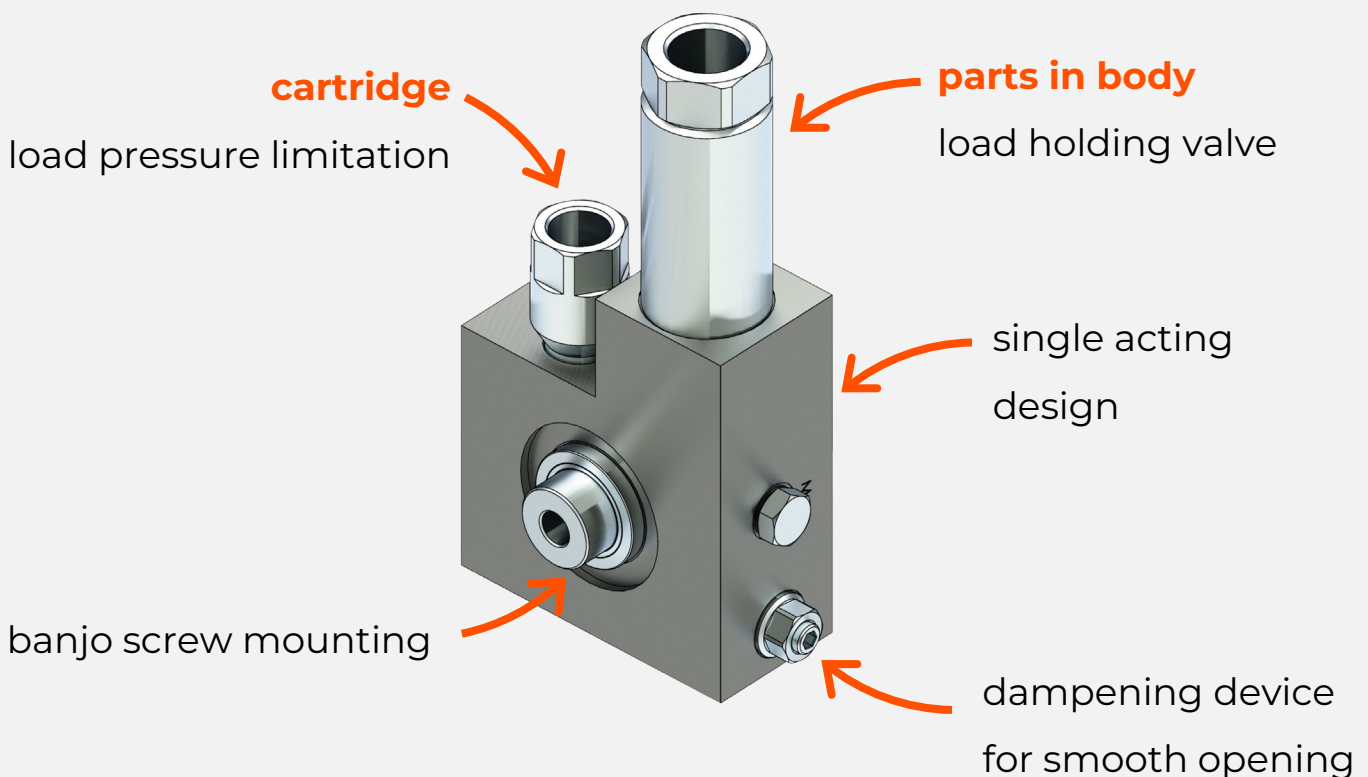
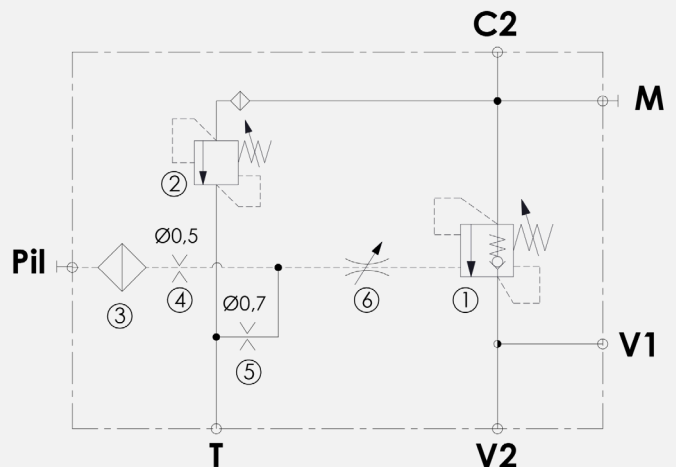
Fluid Tech

CONCRETE PUMP CRANE

MAX FLOW RATE 20 [l/min]

MAX PRESSURE 500 [bar]

- ✓ **high pressure**
- ✓ **improved safety**
- ✓ **reduced hysteresis**
- ✓ **reduced response time**
- ✓ **more robust design**
- ✓ **dimensional interchangeability** with competitors



...Believe in Better

ENERGY SAVING ON MACHINERY



PERFORMANCE IMPROVEMENT



■ Atlantic Fluid Tech product performance

■ market average conventional performance



ATLANTIC

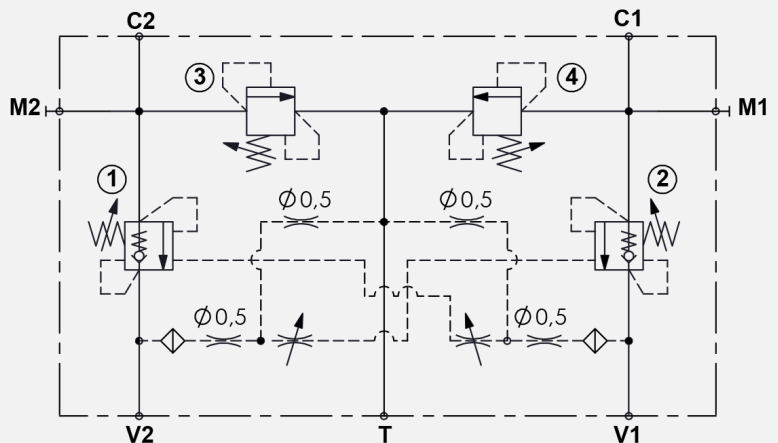
Fluid Tech

CONCRETE PUMP CRANE

MAX FLOW RATE 60 [l/min]

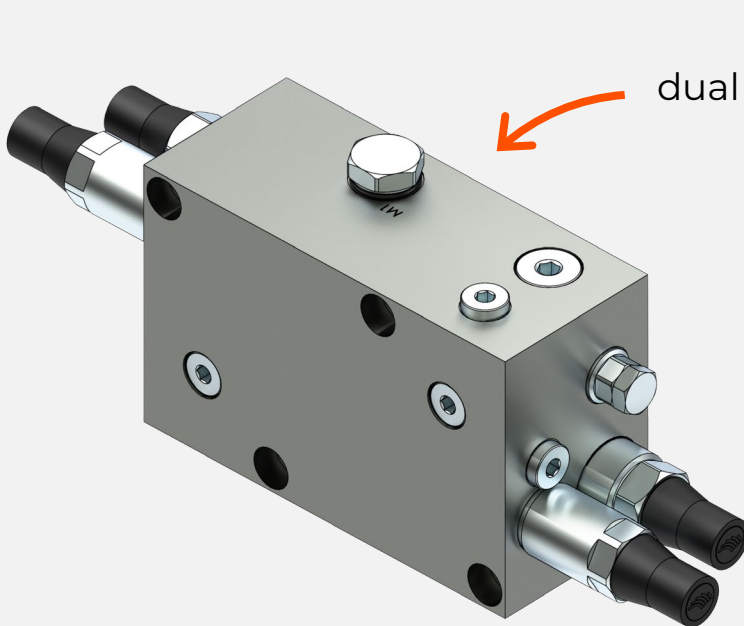
MAX PRESSURE 350 [bar]

- ✓ **reduced pipe connections**
- ✓ **reduced assembling time on machine**



cartridge

load pressure limitation



dual acting design

parts in body

load holding valve

...Believe in Better

ENERGY SAVING ON MACHINERY



PERFORMANCE IMPROVEMENT



Atlantic Fluid Tech product performance

market average conventional performance

HIGHLIGHTS





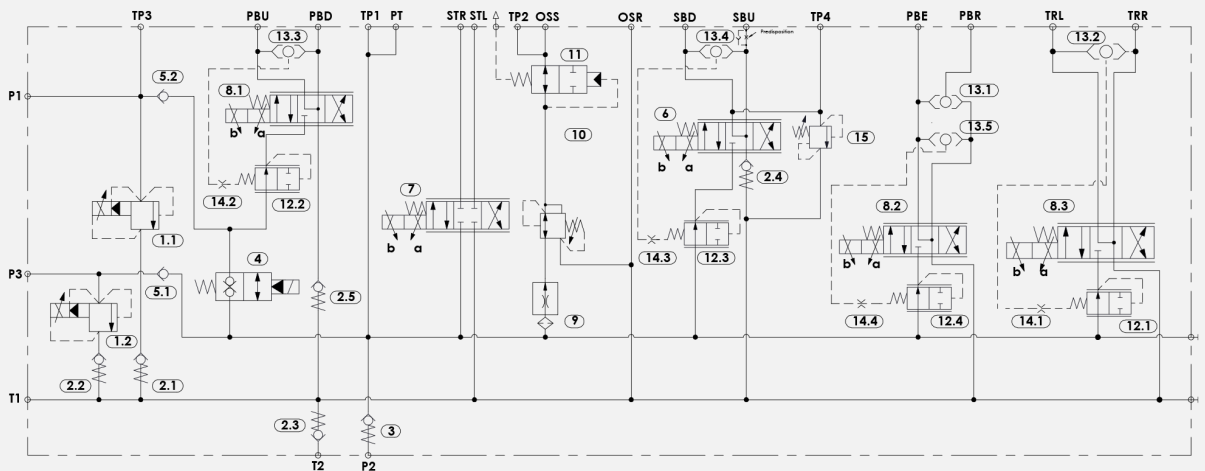
ATLANTIC

Fluid Tech

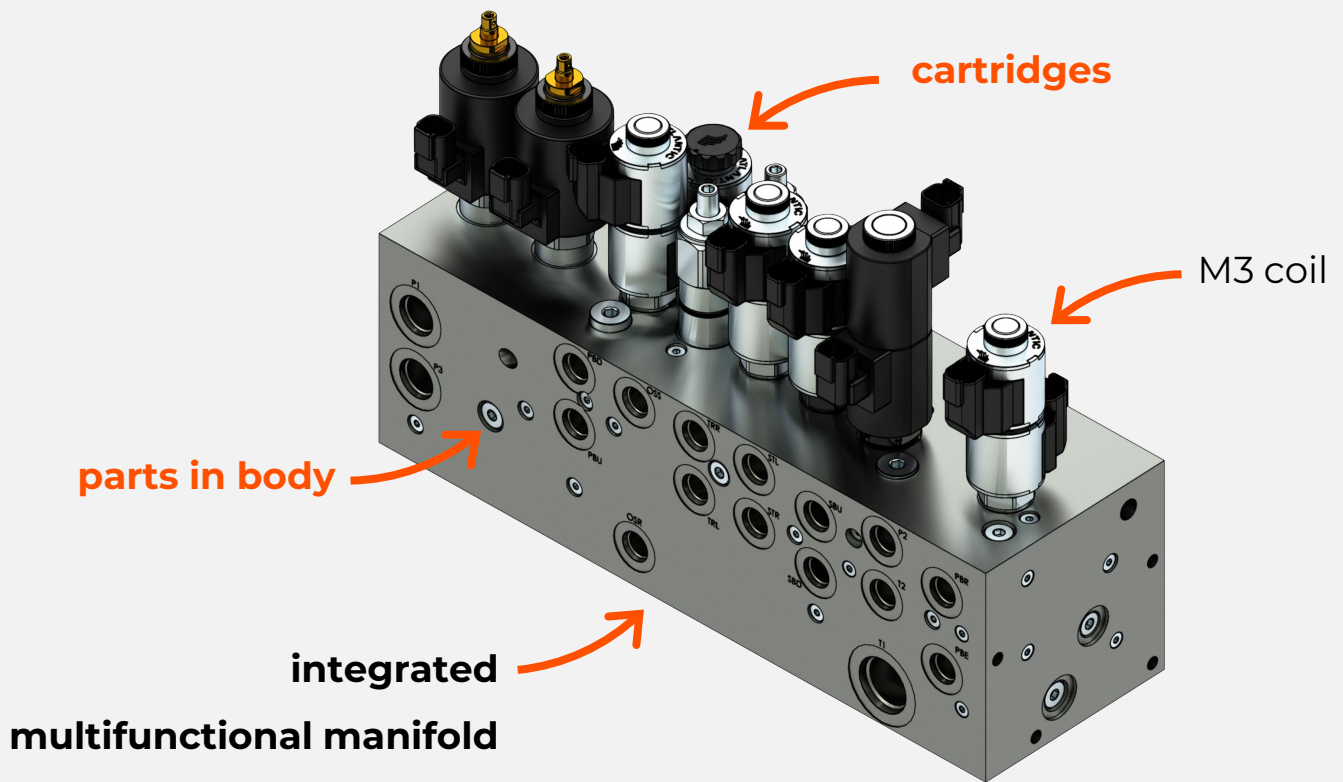
AERIAL PLATFORM

MAX FLOW RATE 30 [l/min]

MAX PRESSURE 210 [bar]



✓ **hybrid technology**



...Believe in Better

ENERGY SAVING ON MACHINERY



PERFORMANCE IMPROVEMENT



■ **Atlantic Fluid Tech product performance**

■ **market average conventional performance**



ATLANTIC

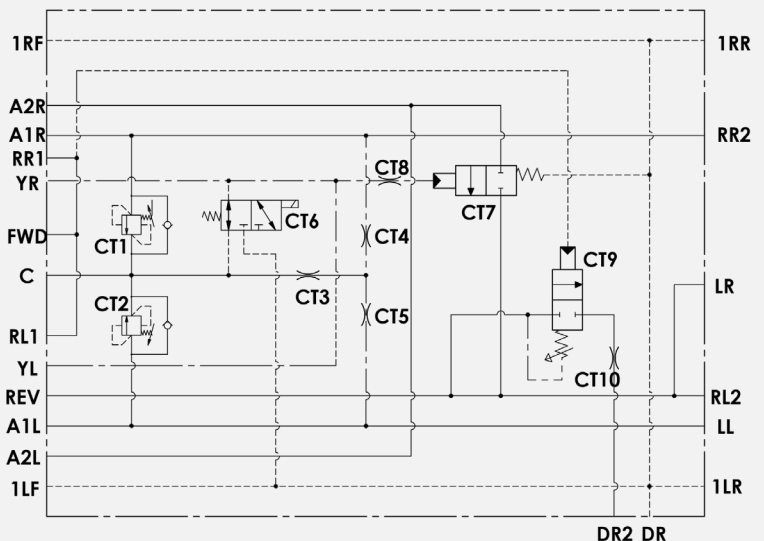
Fluid Tech

SKID STEER LOADER

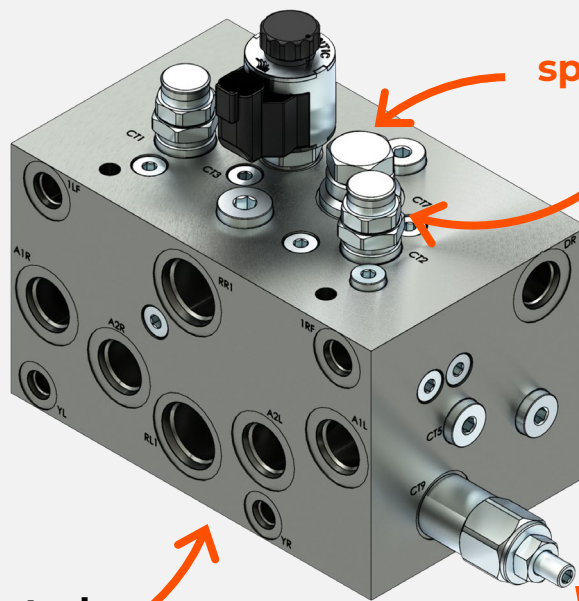
MAX FLOW RATE 130 [l/min]

MAX PRESSURE 450 [bar]

- ✓ **high flow rate**
- ✓ **high pressure**



on/off **cartridges**



spool in body

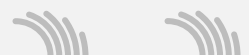
parts in body

integrated

**mechanical
cartridge**

...Believe in Better

ENERGY SAVING ON MACHINERY



PERFORMANCE IMPROVEMENT



Atlantic Fluid Tech product performance

market average conventional performance



ATLANTIC

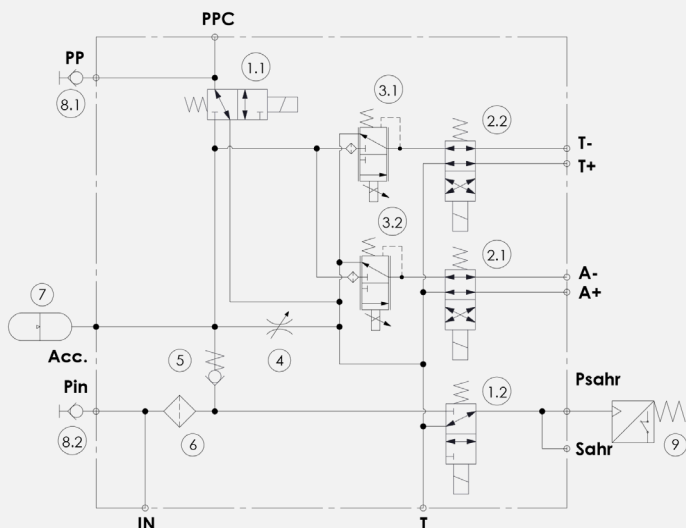
Fluid Tech

TELEHANDLER | Brakes

MAX FLOW RATE 10 [l/min]

MAX PRESSURE 50 [bar]

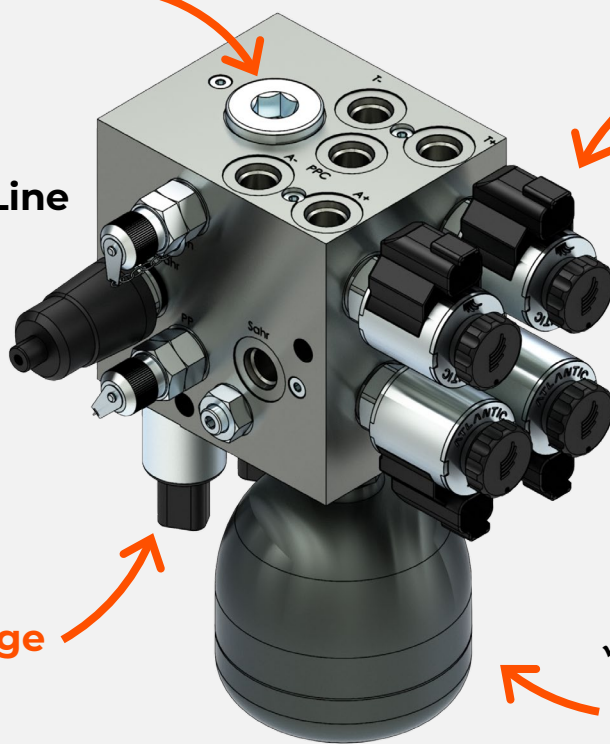
✓ **new product lines**



filter

on/off **cartridges**

✓ **New Product Line**
sensor



proportional **cartridge**

✓ **New Product Line**
accumulator

...Believe in Better

ENERGY SAVING ON MACHINERY



PERFORMANCE IMPROVEMENT



■ **Atlantic Fluid Tech product performance**

■ **market average conventional performance**



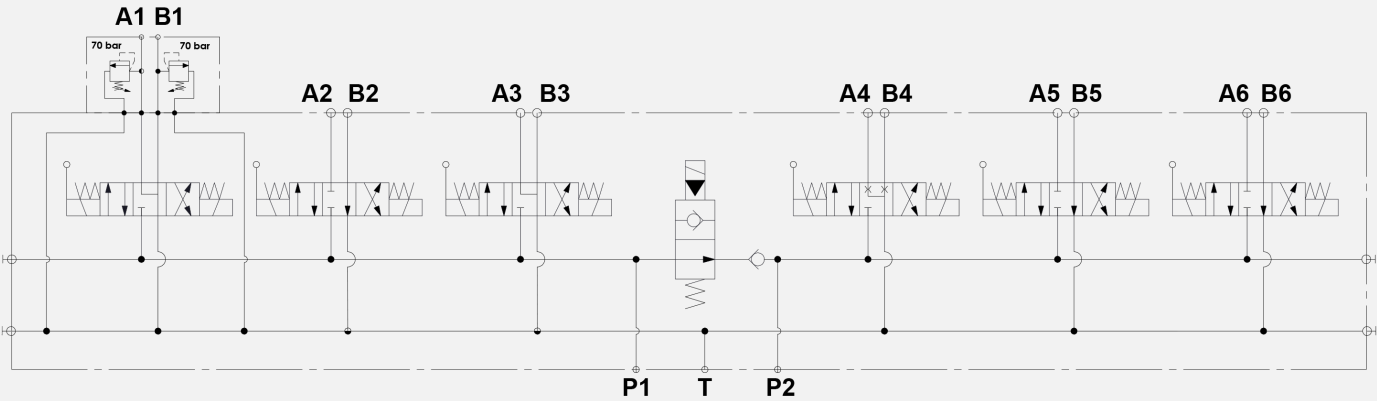
ATLANTIC

Fluid Tech

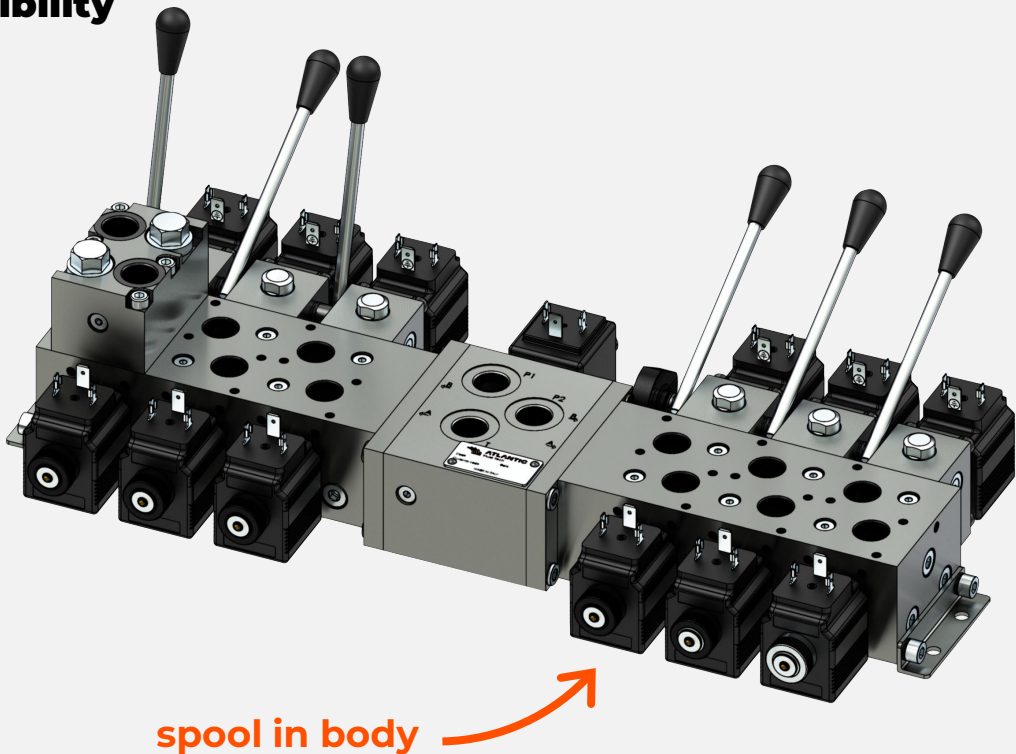
SPOOL IN BODY TECHNOLOGY

MAX FLOW RATE 30 [l/min]

MAX PRESSURE 310 [bar]



- ✓ **compact design**
- ✓ **anti external leakage design**
- ✓ **flexibility**



...Believe in Better

ENERGY SAVING ON MACHINERY



PERFORMANCE IMPROVEMENT



Atlantic Fluid Tech product performance

market average conventional performance