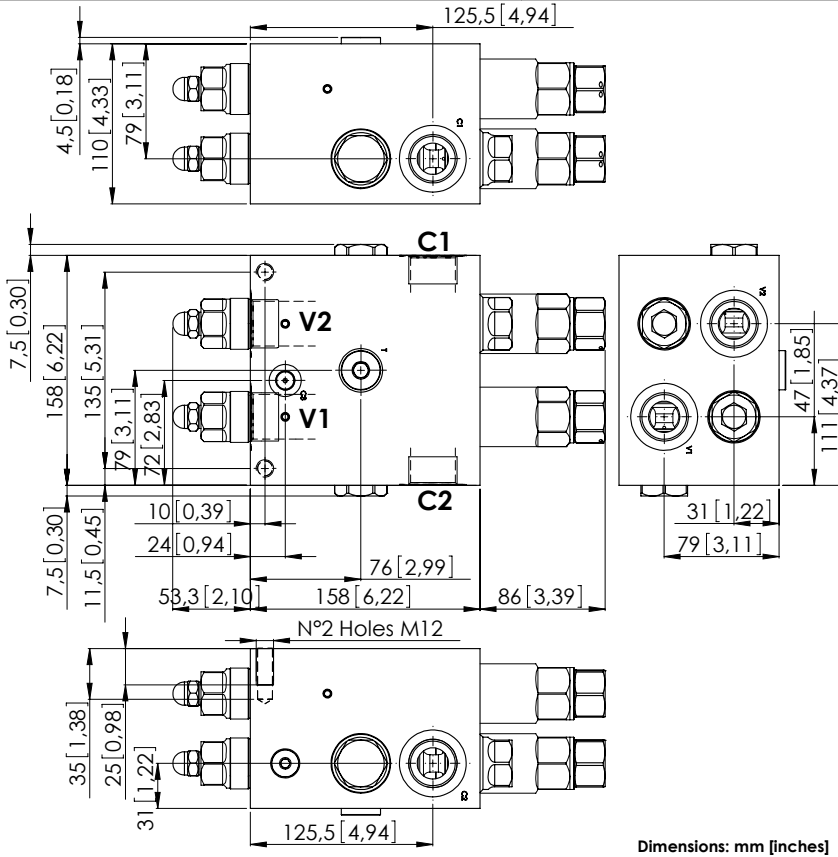
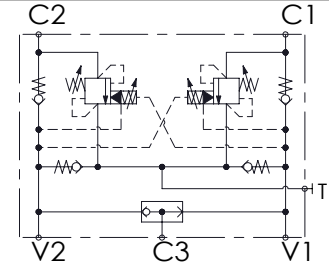


MNDN-200-LLPV

SOFT STOP
DUAL SETTING
WITH BRAKE RELEASE



Dimensions: mm [inches]



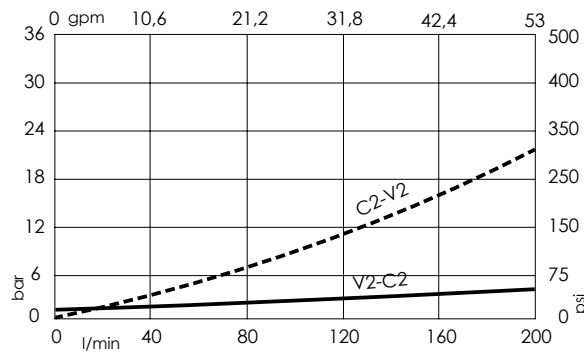
SPECIFICATIONS

Max. operating pressure:	300 bar (4300 psi)
Rated flow:	200 l/min (53 gpm)
Manifold:	Aluminium
Weight:	9,81 kg (21,63 lbs)
Contamination class to ISO 4406:	See technical spec.
MTF _a :	150 years

NOTES

Setting: at least 1.3 times the load induced pressure.

CURVES



ORDERING CODES

Quick code	Description	Pilot ratio	Main ports size	Standard setting Q=5 l/min (1,3 gpm)	Adjustment range	Pressure increase
MN000022	MNDN-200-LLPV-08-G10-N300	8:1	V1,V2,C1,C2 : G1" T : G1/2"; C3 : G 1/4"	Start: 300 bar (4300 psi) Brake: 120 bar (1700 psi)	100-300 bar (1400-4300 psi)	65 bar/turn (900 psi/turn)