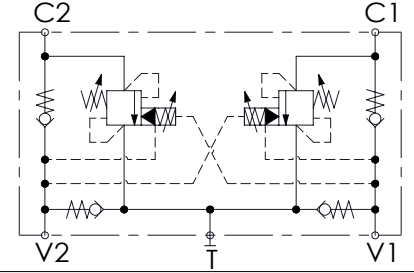
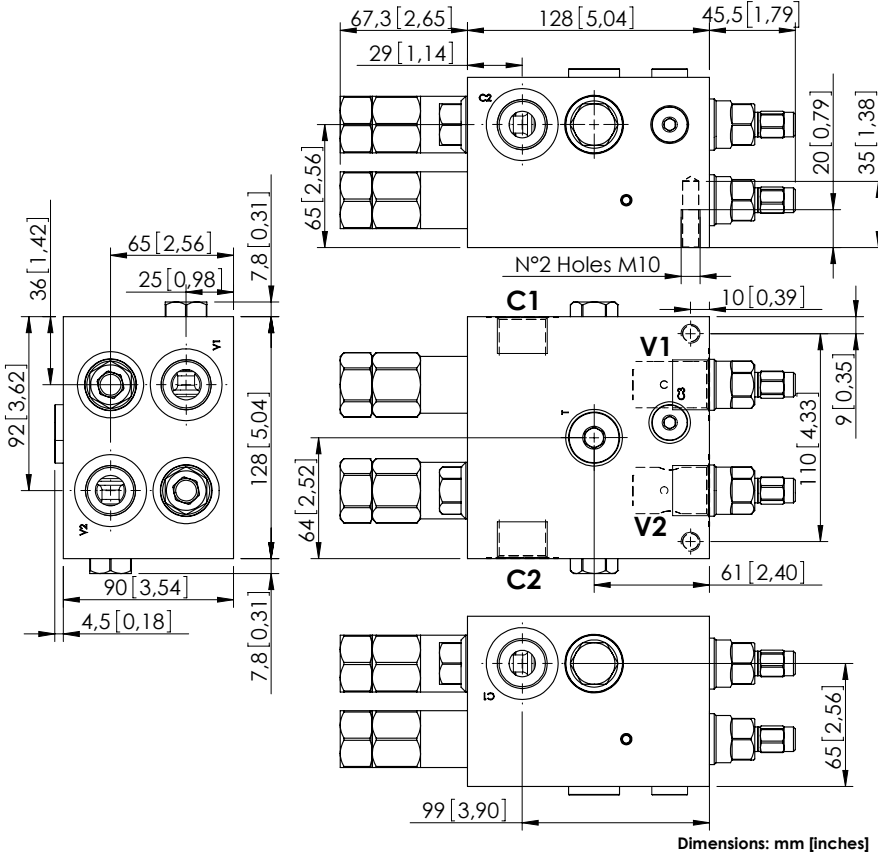


# MNDN-120-LLPT

SOFT STOP  
DUAL SETTING



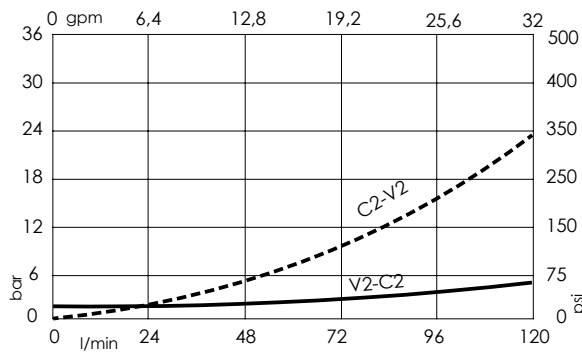
## SPECIFICATIONS

|                                  |                     |
|----------------------------------|---------------------|
| Max. operating pressure:         | 300 bar (4300 psi)  |
| Rated flow:                      | 120 l/min (32 gpm)  |
| Manifold:                        | Aluminium           |
| Weight:                          | 5,14 kg (11,33 lbs) |
| Contamination class to ISO 4406: | See technical spec. |
| MTF <sub>a</sub> :               | 150 years           |

## NOTES

Setting: at least 1.3 times the load induced pressure.

## CURVES



## ORDERING CODES

| Quick code | Description               | Pilot ratio | Main ports size                   | Standard setting<br>Q=5 l/min (1,3 gpm)                | Adjustment range               | Pressure increase               |
|------------|---------------------------|-------------|-----------------------------------|--|--------------------------------|---------------------------------|
| MN000017   | MNDN-120-LLPT-08-G34-N300 | 8:1         | V1,V2,C1,C2 : G3/4"<br>T : G 1/2" | Start: 300 bar (4300 psi)<br>Brake: 120 bar (1700 psi) | 100-300 bar<br>(1400-4300 psi) | 111 bar/turn<br>(1700 psi/turn) |
| MN000047   | MNDN-120-LLPT-03-G34-N300 | 3:1         | V1,V2,C1,C2 : G3/4"<br>T : G 1/2" | Start: 300 bar (4300 psi)<br>Brake: 120 bar (1700 psi) | 100-300 bar<br>(1400-4300 psi) | 111 bar/turn<br>(1700 psi/turn) |
| MN000016   | MNDN-120-LLPT-03-G34-N200 | 3:1         | V1,V2,C1,C2 : G3/4"<br>T : G 1/2" | Start: 180 bar (2600 psi)<br>Brake: 90 bar (1300 psi)  | 70-210 bar<br>(1000-3000 psi)  | 73 bar/turn<br>(1000 psi/turn)  |
|            |                           |             |                                   |  |                                |                                 |
|            |                           |             |                                   |  |                                |                                 |
|            |                           |             |                                   |  |                                |                                 |