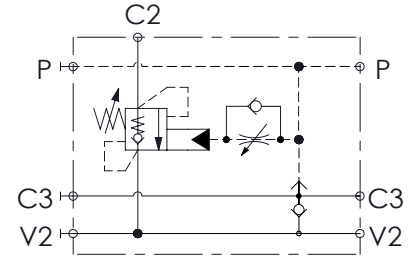
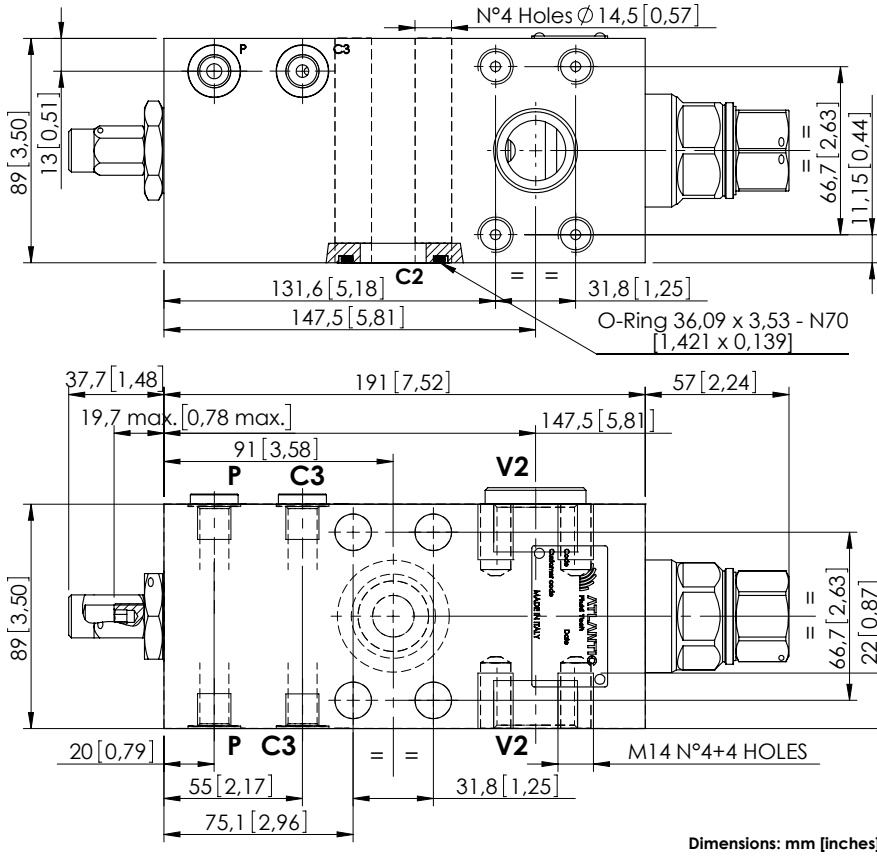


MBSN-300-AMSF

SINGLE ACTING
WITH BRAKE RELEASE



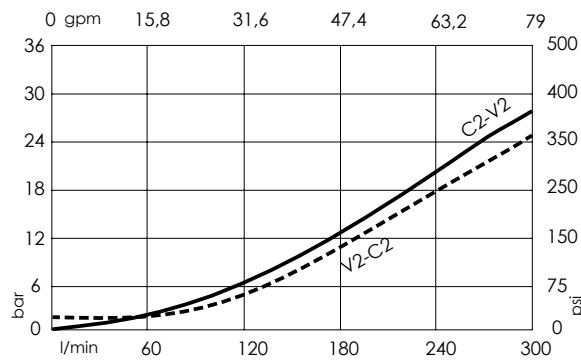
SPECIFICATIONS

Max. operating pressure:	500 bar (7200 psi)
Rated flow:	300 l/min (79 gpm)
Manifold:	Steel
Weight:	10,93 kg (24,1 lbs)
Contamination class to ISO 4406:	See technical spec.
MTF _a :	150 years

NOTES

Setting: at least 1.3 times the load induced pressure.

CURVES



ORDERING CODES

Quick code	Description	Pilot ratio	Main ports size	Standard setting Q=5 l/min (1,3 gpm)	Adjustment range	Pressure increase
MB000665	MBSN-300-AMSF-13-S11-N500	13:1	C2,V2 : 1-1/4" SAE 6000 Pil,C3 : G 1/4"	500 bar (7200 psi)	250-500 bar (3600-7200 psi)	104 bar/turn (1500 psi/turn)