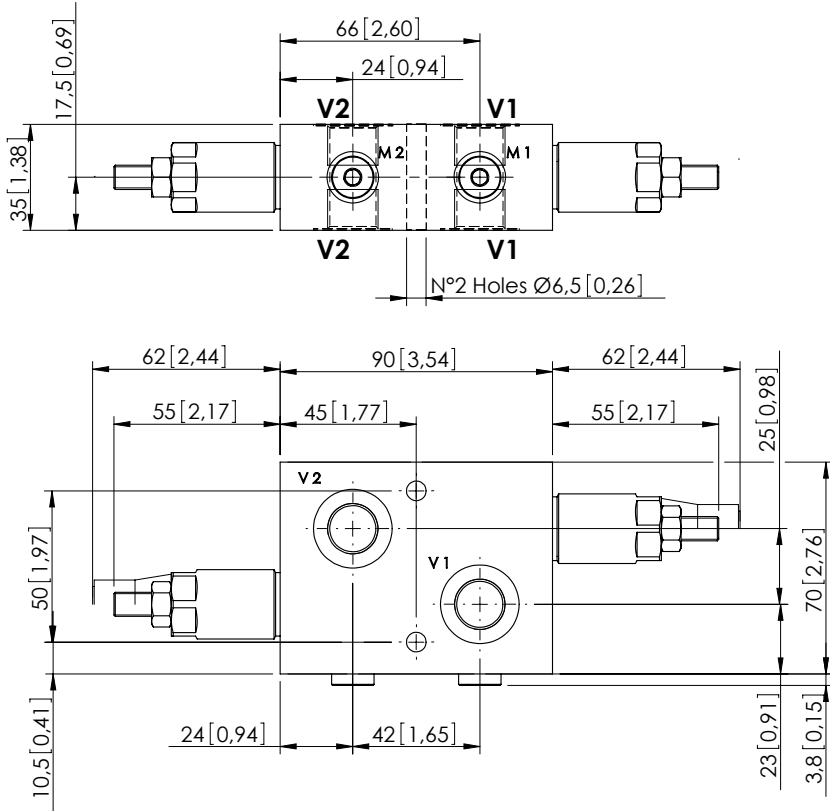
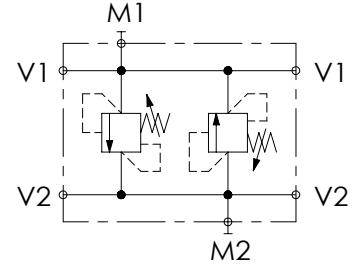


# MADN-030-TLNR

DOUBLE ANTISHOCK



Dimensions: mm [inches]

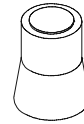


## SPECIFICATIONS

|                                  |                     |
|----------------------------------|---------------------|
| Max. operating pressure:         | 350 bar (5000 psi)  |
| Rated flow:                      | 30 l/min (8 gpm)    |
| Manifold:                        | Aluminium           |
| Weight:                          | 0,81 kg (1,79 lbs)  |
| Contamination class to ISO 4406: | See technical spec. |
| MTTFa:                           | 150 years           |

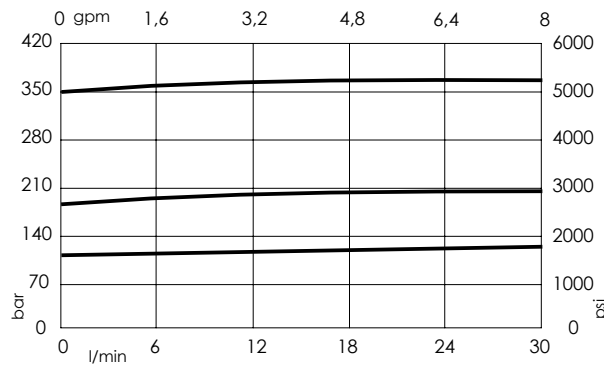
## NOTES

## SEALING CAP



Ordering code:  
AT000020

## CURVES



## ORDERING CODES

| Quick code | Description               | Main ports size                  | Standard setting<br>Q=5 l/min (1,3 gpm) | Adjustment range               | Pressure increase              |
|------------|---------------------------|----------------------------------|---|--------------------------------|--------------------------------|
| MA000006   | MADN-030-TLNR-HN-G38-N350 | V1,V2 : G 3/8"<br>M1,M2 : G 1/8" | 350 bar<br>(5000 psi)                   | 100-350 bar<br>(1400-5000 psi) | 91 bar/turn<br>(1300 psi/turn) |
| MA000005   | MADN-030-TLNR-HN-G38-N200 | V1,V2 : G 3/8"<br>M1,M2 : G 1/8" | 200 bar<br>(2900 psi)                   | 50-210 bar<br>(700-3000 psi)   | 42 bar/turn<br>(600 psi/turn)  |
| MA000004   | MADN-030-TLNR-HN-G38-N100 | V1,V2 : G 3/8"<br>M1,M2 : G 1/8" | 100 bar<br>(1400 psi)                   | 30-100 bar<br>(450-1400 psi)   | 20 bar/turn<br>(300 psi/turn)  |
|            |                           |                                  |   |                                |                                |
|            |                           |                                  |   |                                |                                |
|            |                           |                                  |   |                                |                                |